

THIS MAP WAS PREPARED FOR ASSESSMENT PURPOSE ONLY.

Upper Left:
123°34'6"W 43°4'26"N
4101672E 527841N ft

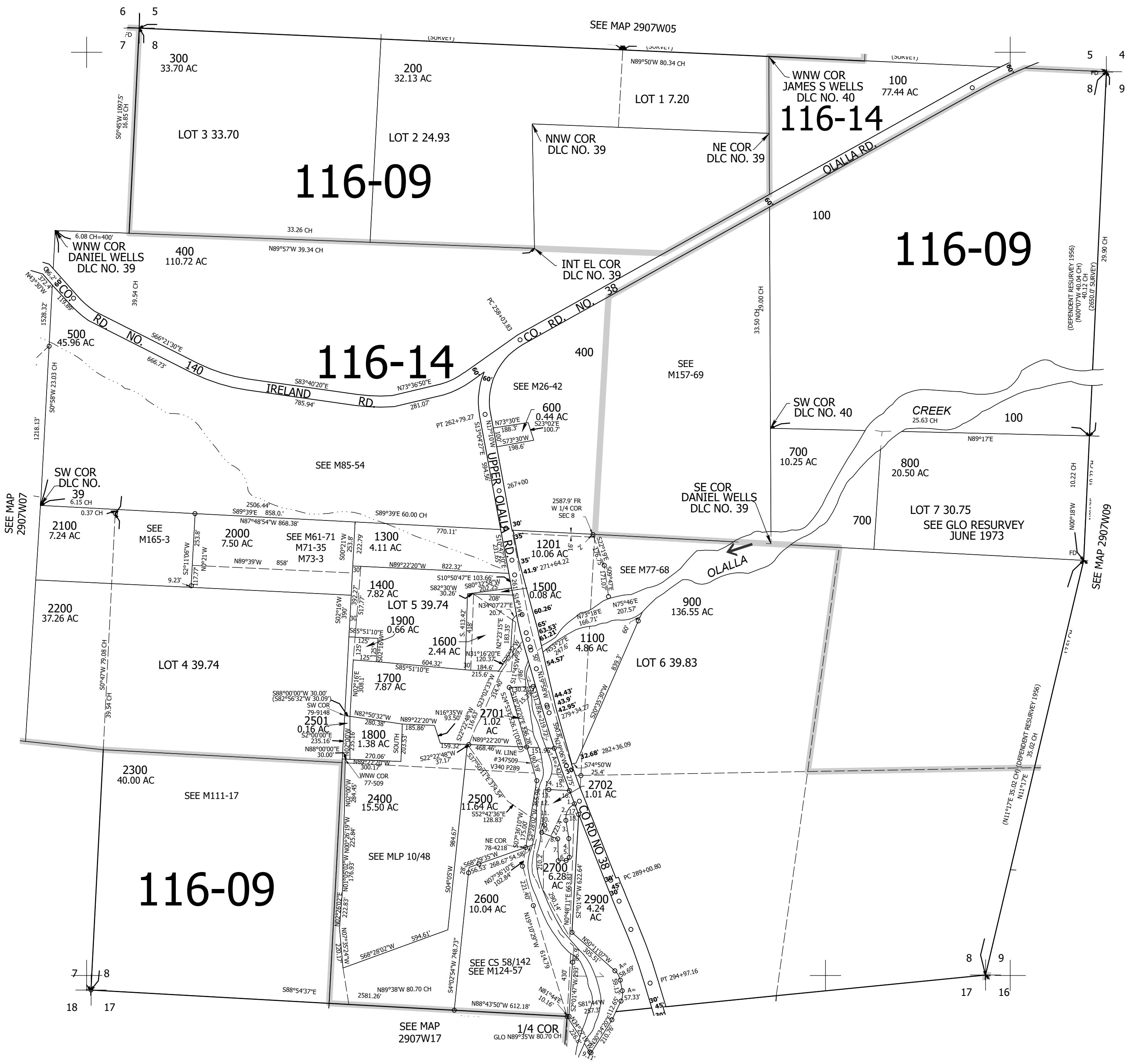
SEC.08 T.29S. R.07W. W.M.
DOUGLAS COUNTY
1" = 400'

Date Exported 2025-09-16

290708

- TAXLOT 2702
1. S51°56'40"W 18.99'
 2. LC=S20°29'29"W 86.10'
A=90.58' R=82.50'
 3. S10°57'42"E 99.58'
 4. S3°23'54"E 101.06'
 5. LC=S41°23'12"W 24.66'
A=27.36' R=17.50'
 6. S86°10'19"W 42.53'
 7. N3°26'58"W 118.84'
 8. N70°21'16"W 93.3'
 9. N19°38'44"W 45.2'
 10. N76°45'56"W 25' TO C/L
 11. N5°34'58"E 33.48'
 12. N1°37'03"W 60.13'
 13. N7°02'41"W 93.03'
 14. S89°22'03"E 27.12' FROM C/L
 15. S89°22'03"E 113.18'
A=76.21' R=5759.58'
 16. LC=S23°00'39"E 76.21'
A=76.21' R=5759.58'
 17. LC=S23°27'15"E 12.92'
A=12.92' R=5759.58'
 18. S23°31'06"E 73.86'

CANCELLED NOS:
1300M1 1400M1 1500M1
1700M1 1800M1 1900M1
2400M1 2500M1 2501M1
2600M1 2800M1 2703
2801 2800 1000
1200 2101



290708

Lower Right:
123°32'17"W 43°3'20"N
4109521E 520885N ft