

THIS MAP WAS PREPARED FOR ASSESSMENT PURPOSE ONLY.

Upper Left:
123°35'17"W 43°4'27"N
4096391E 528160N ft

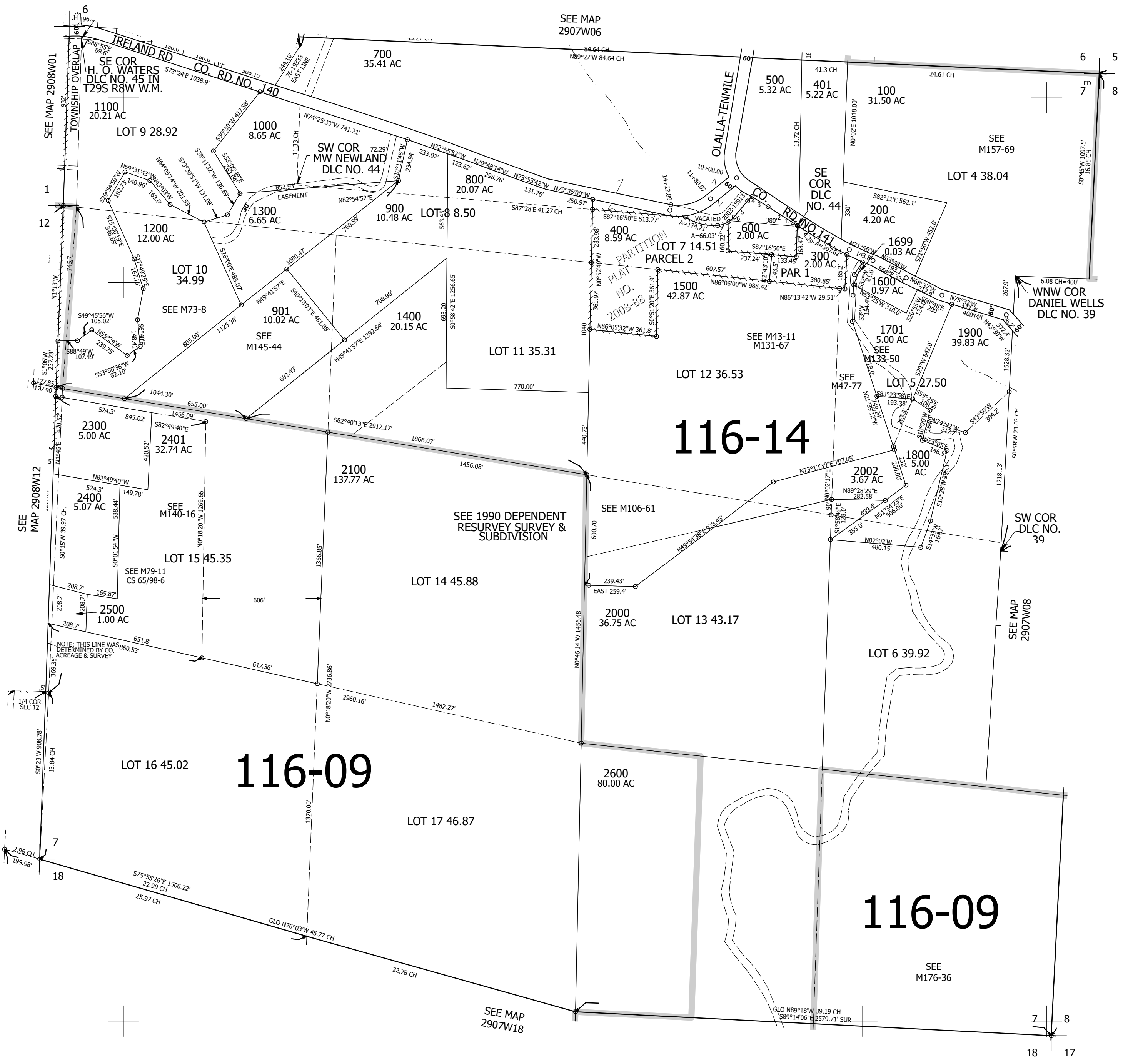
SEC.07 T.29S. R.07W. W.M.
DOUGLAS COUNTY
1" = 400'

Date Exported 2025-03-13

290707

TAXLOT 600
1. N58°30'25"W 28.04'
2. LC=N59°12'59"W 160.72'
R=6489.07' A=160.73'
3. N59°55'33"W 102.34'
4. S43°13'44"W 33.98'
5. S38°15'42"W 113.3'
6. LC=S46°18'08"W 36.37'
R=130'

CANCELLED NOS:
1401 2001 1502
1700 403 1501
402 2200



18 17

290707

Lower Right:
123°33'28"W 43°3'21"N
4104240E 521205N ft