

THIS MAP WAS PREPARED FOR ASSESSMENT PURPOSE ONLY.

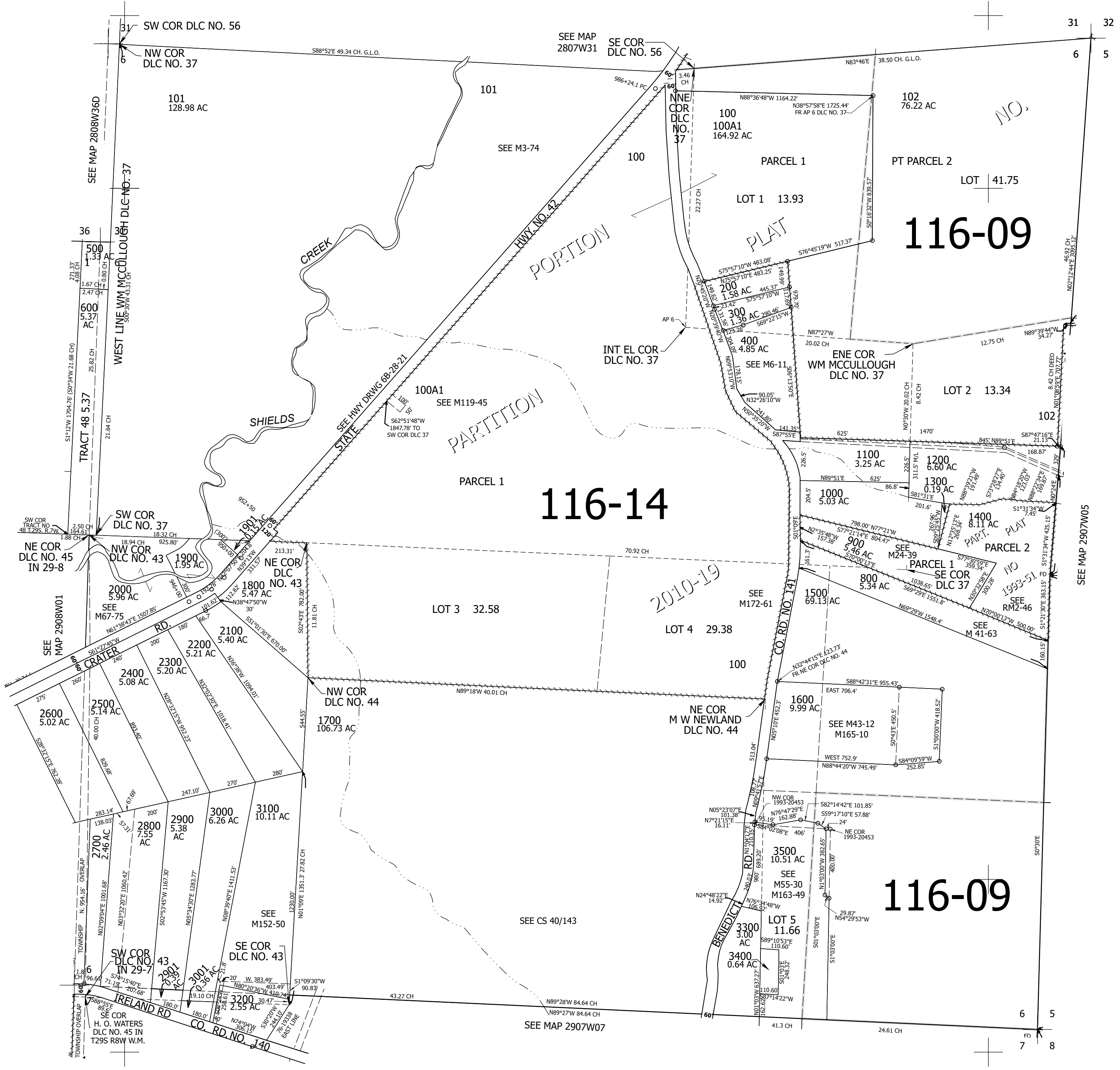
Upper Left:  
123°35'18"W 43°5'19"N  
4096538E 533433N ft

SEC.06 T.29S. R.07W. W.M.  
DOUGLAS COUNTY  
1" = 400'

Date Exported 2025-04-08

290706

CANCELLED NOS:  
501 1301 3201  
1501 3600 1502  
3501 700



SEE MAP 2907W05

SEE MAP 2908W01

SEE MAP 2808W36D

SEE MAP 2807W31

SEE MAP 2907W07

SEE MAP 2908W01

290706

Lower Right:  
123°33'29"W 43°4'13"N  
4104387E 526478N ft