

THIS MAP WAS PREPARED FOR ASSESSMENT PURPOSE ONLY.

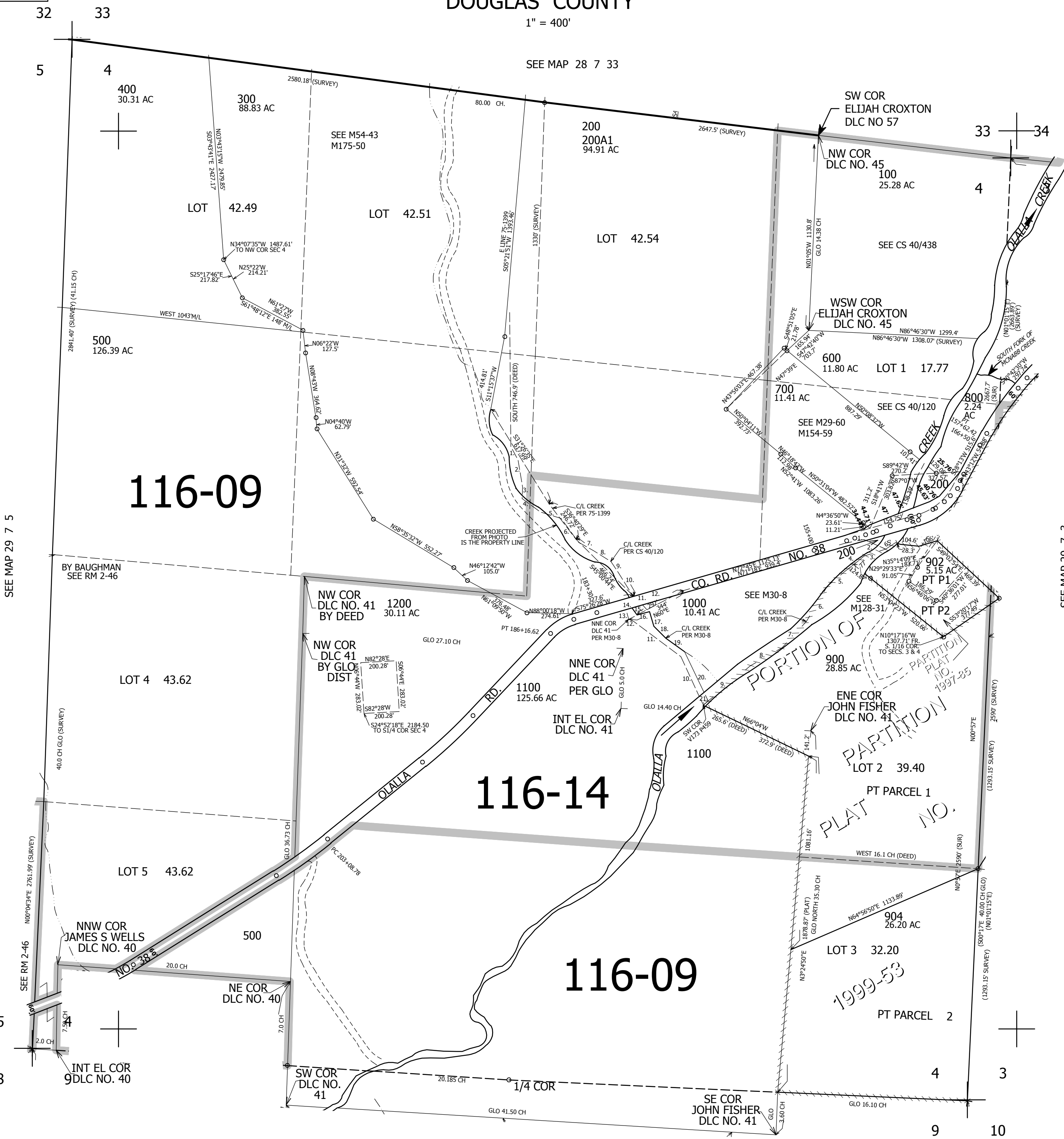
SEC.4 T.29S. R.7W. W.M. DOUGLAS COUNTY

REVISED ON 8-16-16

29 7 4

1" = 400'

SEE MAP 28 7 33



116-09

116-14

116-09

CANCELLED NO'S  
101 901 903  
201 905 1101  
1102 202 701

- PARCEL 200
1. S28°E 84.7'
  2. S9°E 152.7'
  3. S2°10'W 63.7'
  4. S53°E 125.5'
  5. S71°55'E 122'
  6. S35°35'E 162.2'
  7. S59°45'E 98.5'
  8. S57°50'E 112.6'
  9. S33°05'E 77.1'
  10. S31°50'E 128.8'
  11. S42°40'E 136.6'
  12. N60°45'E 236.5'

- PARCEL 1000
1. N76°46'E 104.3'
  2. S69°04'E 132'
  3. S70°23'W 126'
  4. S50°39'W 132'
  5. S48°37'W 133'
  6. S29°38'W 228.2'
  7. S41°40'W 198.3'
  8. S59°02'W 204.2'
  9. S48°30'W 289.2'
  10. N33°38'W 258.1'
  11. N55°35'W 327.4'
  12. N69°52'W 29.4'
  13. N17°37'W 52'
  14. N71°04'E 35'
  15. S38°24'E 44.5'
  16. N72°41'E 71.9'
  17. S18°29'E 84.5'
  18. S47°39'E 95.17'
  19. S56°42'E 127.6'
  20. S34°10'E 267.04'
  21. S48°30'W 35'

SEE MAP 29 7 5

SEE MAP 29 7 3

SEE MAP 29 7 9

527,000

29 7 4

4,109,000