

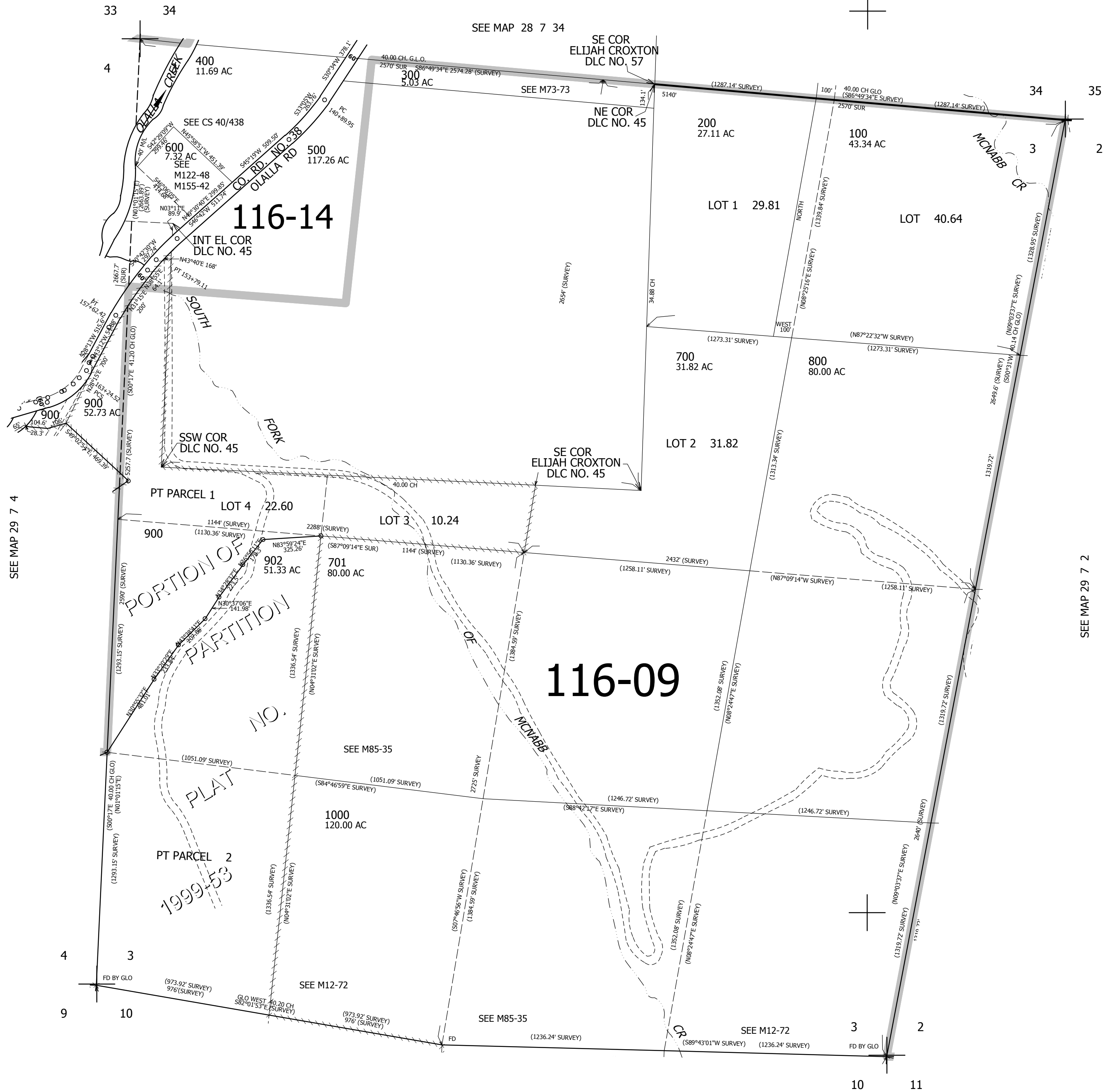
THIS MAP WAS PREPARED FOR ASSESSMENT PURPOSE ONLY.

SEC.3 T.29S. R.7W. W.M. DOUGLAS COUNTY

REVISED ON 4-30-19

29 7 3

1" = 400'



CANCELLED NO'S 401 901 402 403

527,000

29 7 3

SEE MAP 29 7 10

SEE MAP 29 7 4

SEE MAP 29 7 2

4,118,000