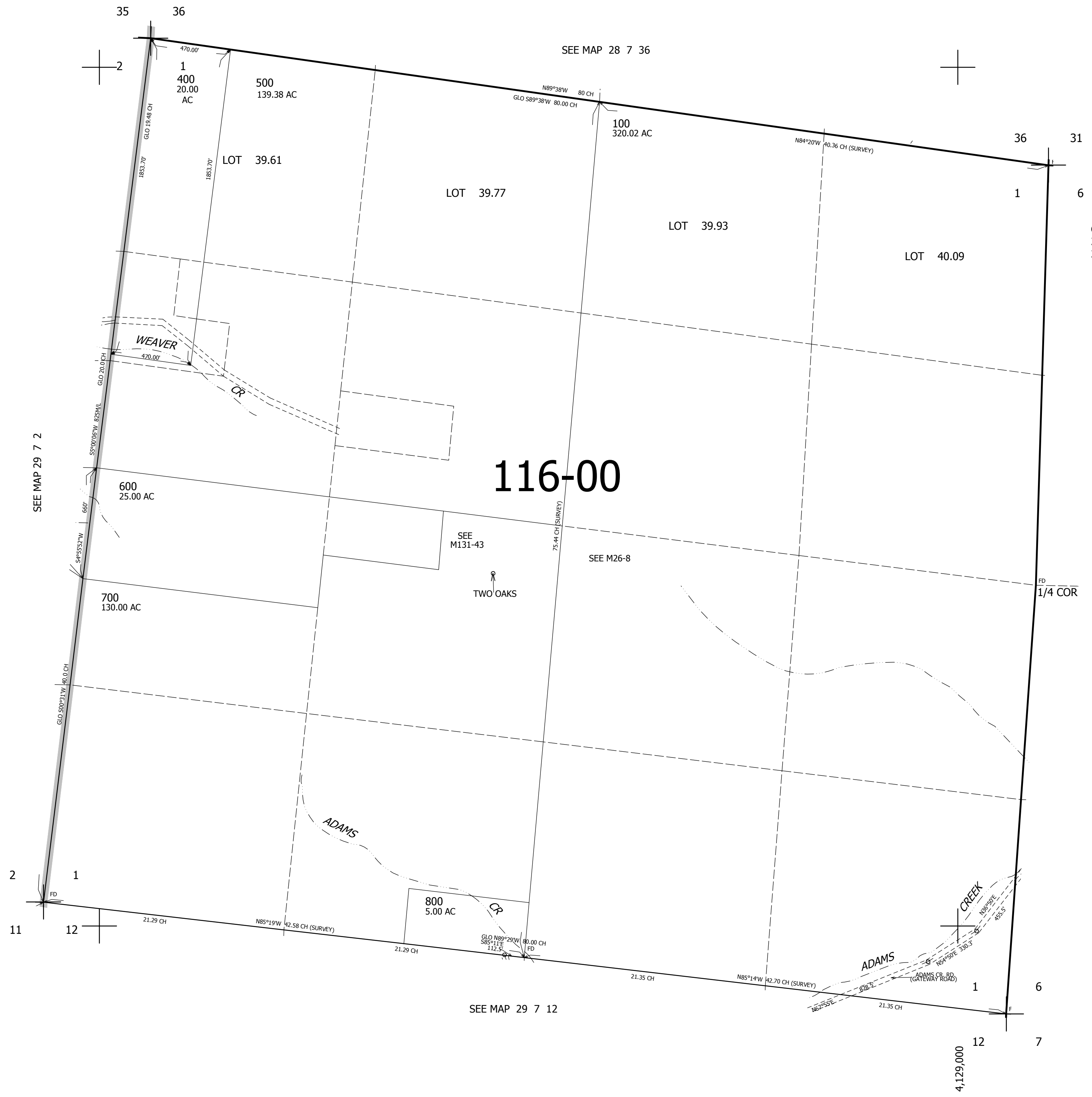


THIS MAP WAS PREPARED FOR ASSESSMENT PURPOSE ONLY.

SEC.1 T.29S. R.7W. W.M.  
DOUGLAS COUNTY  
1" = 400'

REVISED ON  
1-26-18

29 7 1



CANCELLED NO'S  
200 301 401  
300

SEE MAP 29 6 6

526,000

4,129,000

29 7 1