

THIS MAP WAS PREPARED FOR ASSESSMENT PURPOSE ONLY.

T.29S. R.7W. W.M. DOUGLAS COUNTY

1" = 2000'

REVISED ON

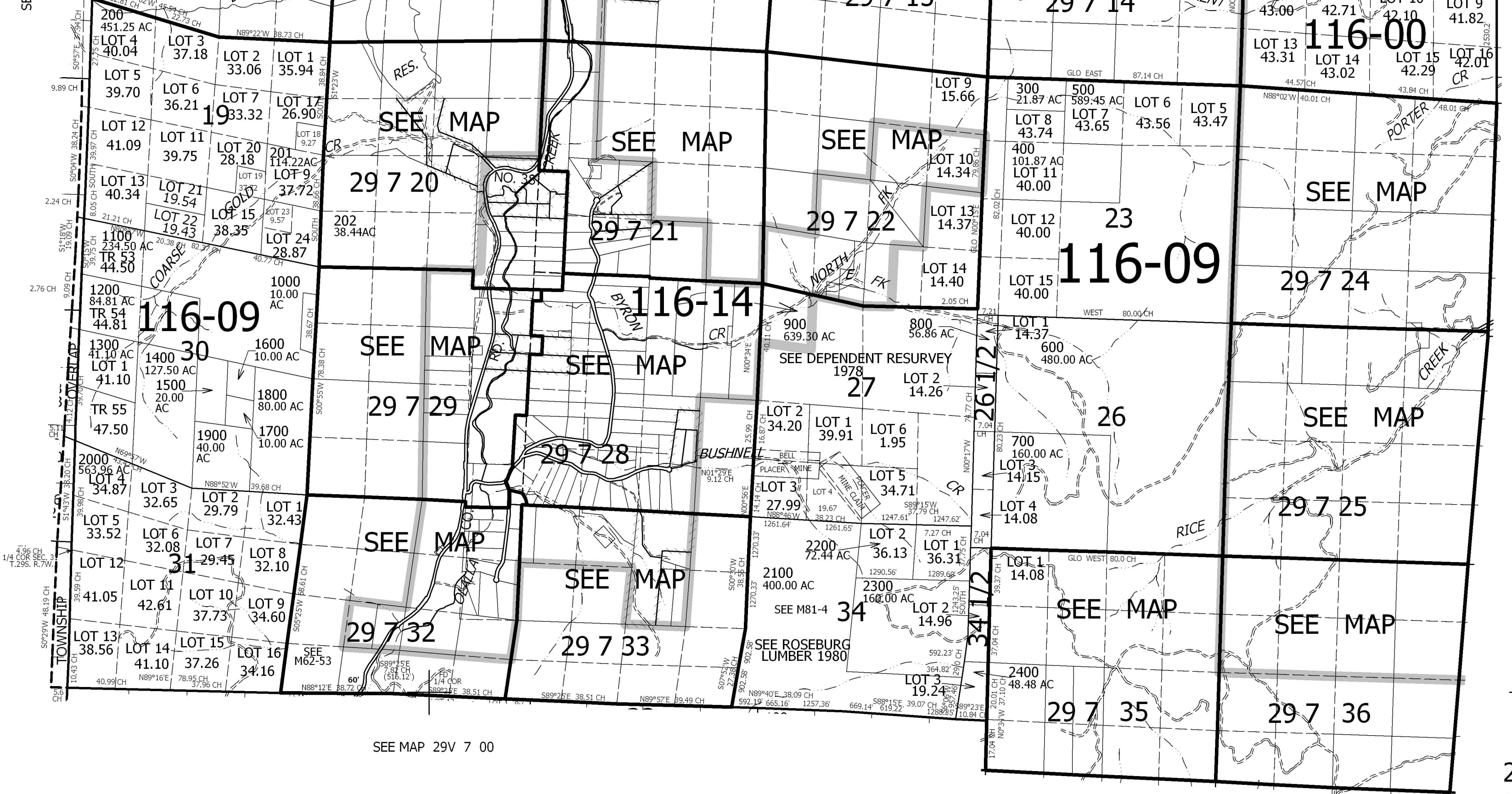
29 7 00 & INDEX

SEE MAP 28 7 00

CANCELLED NO'S 1600M1 1800M1 2100M1

SEE MAP 29 8 00

SEE MAP 29 6 00



SEE MAP 29V 7 00

SEE MAP 30 7 00

502,000  
4,130,000  
29 7 00 & INDEX