

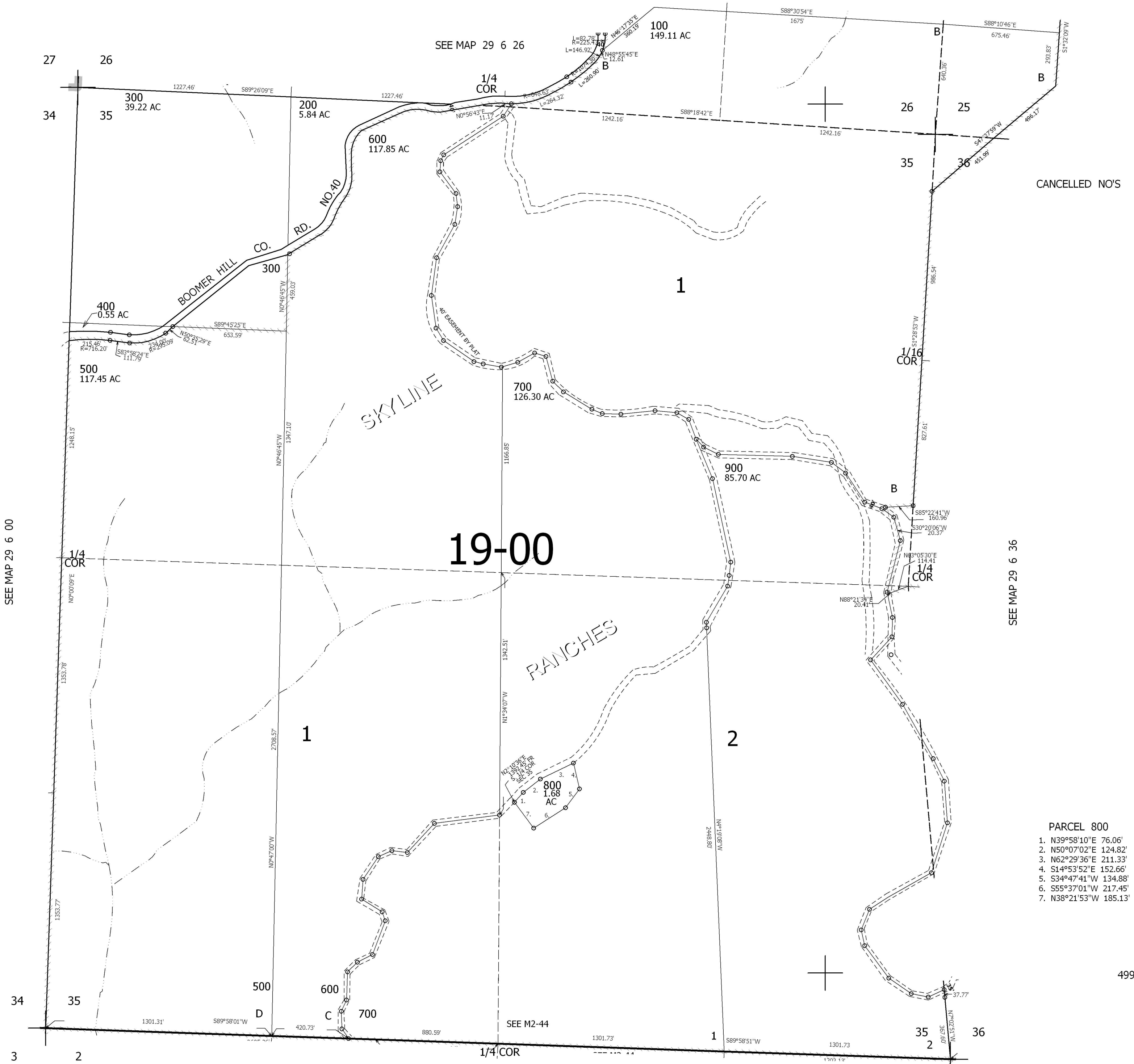
THIS MAP WAS PREPARED FOR ASSESSMENT PURPOSE ONLY.

SEC.35 T.29S. R.6W. W.M.
DOUGLAS COUNTY

1" = 400'

REVISED ON

29 6 35



CANCELLED NO'S

SEE MAP 29 6 00

SEE MAP 29 6 36

- PARCEL 800
1. N39°58'10"E 76.06'
 2. N50°07'02"E 124.82'
 3. N62°29'36"E 211.33'
 4. S14°53'52"E 152.66'
 5. S34°47'41"W 134.88'
 6. S55°37'01"W 217.45'
 7. N38°21'53"W 185.13'

499,000

SEE MAP 30 6 2

4,154,000

29 6 35