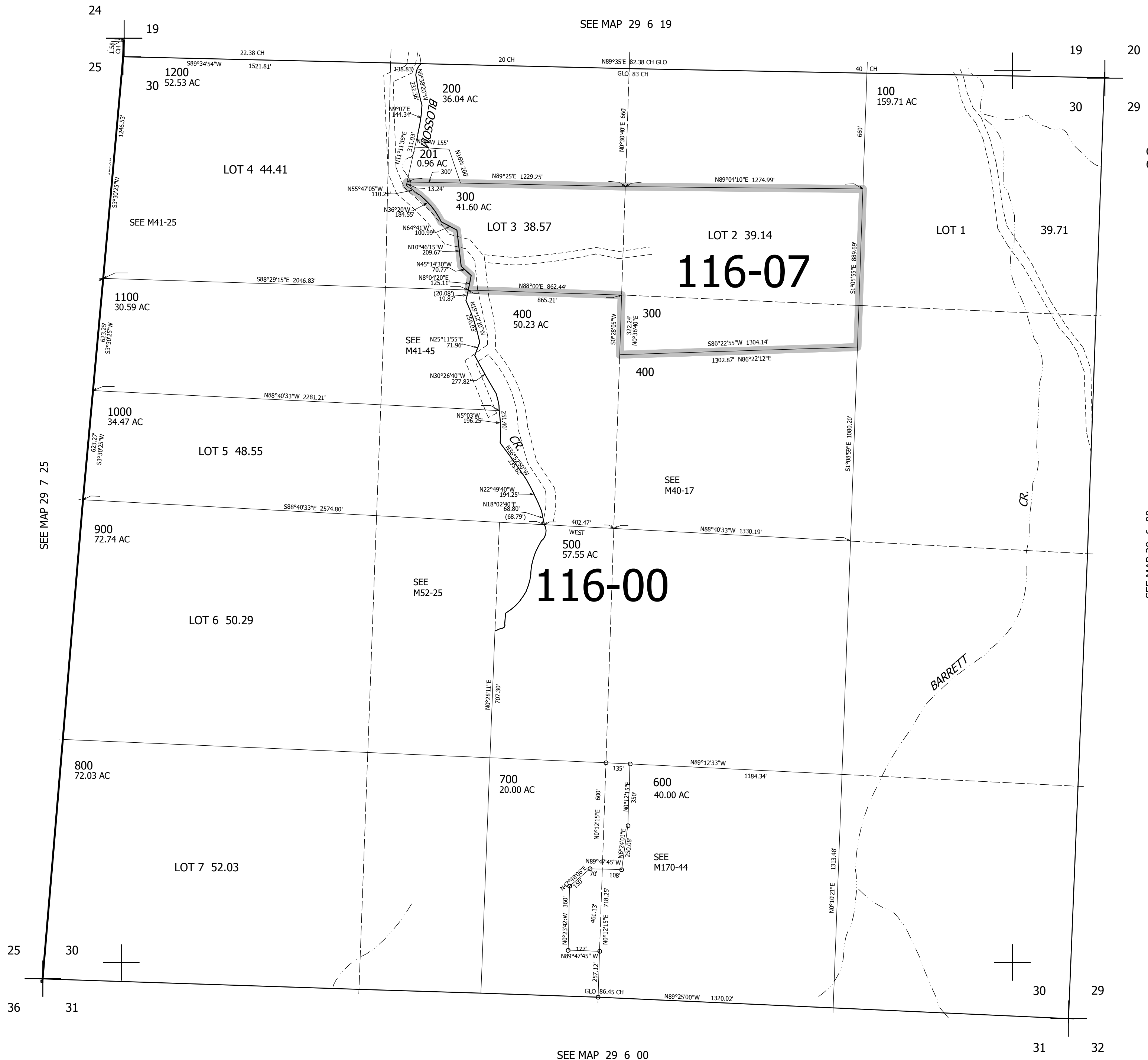


THIS MAP WAS PREPARED FOR ASSESSMENT PURPOSE ONLY.

SEC.30 T.29S. R.6W. W.M.
DOUGLAS COUNTY
1" = 400'

REVISED ON
5-17-16

29 6 30



CANCELLED NO'S
601 701

SEE MAP 29 6 00

505,000

4,134,000

29 6 30