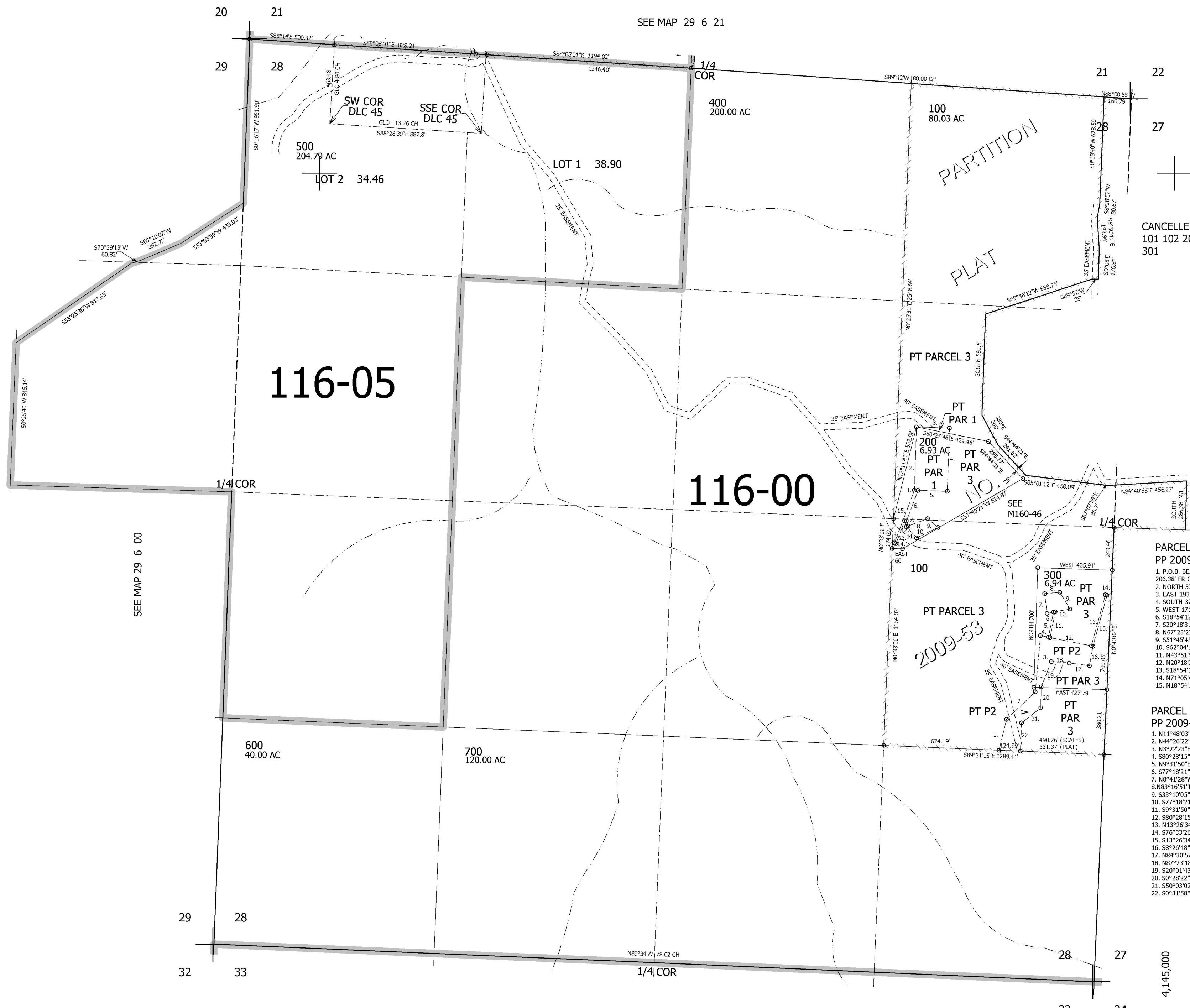


THIS MAP WAS PREPARED FOR ASSESSMENT PURPOSE ONLY.

SEC.28 T.29S. R.6W. W.M.
DOUGLAS COUNTY
1" = 400'

REVISED ON
4-6-10

29 6 28



CANCELLED NO'S
101 102 101
301

- PARCEL 1 OF
PP 2009-53
1. P.O.B. BEARS N34°24'28"E 206.38' FR CE 1/16 COR
 2. NORTH 370.13'
 3. EAST 193.11'
 4. SOUTH 370.13'
 5. WEST 171.97'
 6. S18°54'12"W 191.33'
 7. S20°18'31"E 31.64'
 8. N67°23'23"E 122.32'
 9. S51°45'45"E 79.87'
 10. S62°04'14"W 139.67'
 11. N43°51'57"W 88.74'
 12. N20°18'31"W 35.6'
 13. S18°54'12"W 142.09'
 14. N71°05'48"W 10'
 15. N18°54'12"E 330.14'

- PARCEL 2 OF
PP 2009-53
1. N11°48'03"E 186.4'
 2. N44°26'22"E 232.6'
 3. N3°22'23"E 329.89'
 4. S80°28'15"E 47.35'
 5. N9°31'50"E 150.25'
 6. S77°18'21"W 38.26'
 7. N8°41'28"W 116.29'
 8. N83°16'51"E 88.85'
 9. S33°10'05"E 113.96'
 10. S77°18'21"W 87.28'
 11. S9°31'50"W 154.33'
 12. S80°28'15"E 246.27'
 13. N13°26'34"E 310.77'
 14. S76°33'26"E 10'
 15. S13°26'34"W 310.09'
 16. S8°26'48"W 115.25'
 17. N84°30'57"W 119.78'
 18. N87°23'18"W 104.68'
 19. S20°01'43"W 158.76'
 20. S0°28'22"E 122.74'
 21. S50°03'02"W 142.29'
 22. S0°31'58"E 165.94'

SEE MAP 29 6 00

SEE MAP 29 6 21

SEE MAP 29 6 00

SEE MAP 29 6 00

4,145,000

504,000

29 6 28