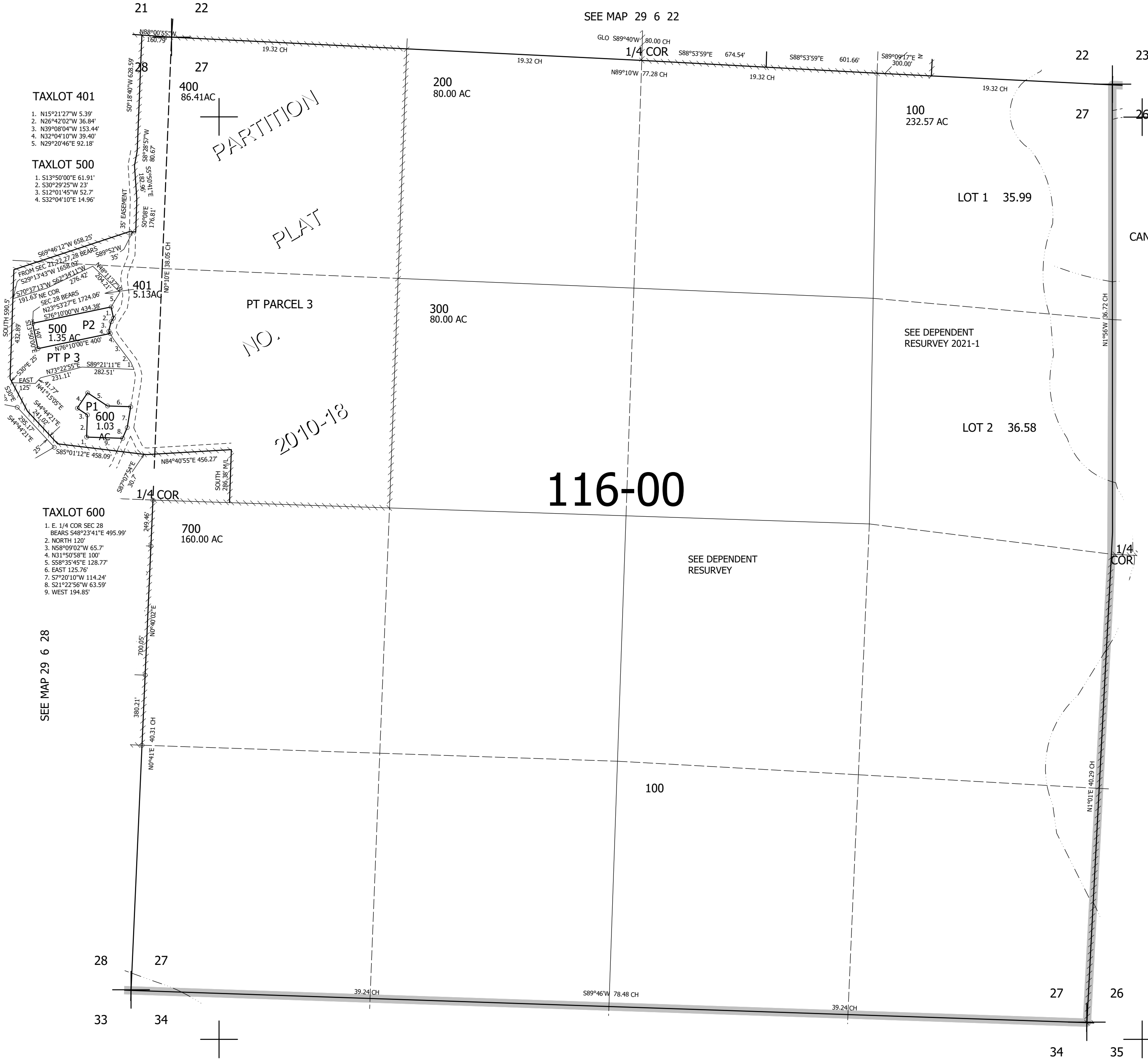


THIS MAP WAS PREPARED FOR ASSESSMENT PURPOSE ONLY.

SEC.27 T.29S. R.6W. W.M.
DOUGLAS COUNTY
1" = 400'

REVISED ON
6-15-17

29 6 27



TAXLOT 401
 1. N15°21'27"W 5.39'
 2. N26°42'02"W 36.84'
 3. N39°08'04"W 153.44'
 4. N32°04'10"W 39.40'
 5. N29°20'46"E 92.18'

TAXLOT 500
 1. S13°50'00"E 61.91'
 2. S30°29'25"W 23'
 3. S12°01'45"W 52.7'
 4. S32°04'10"E 14.96'

TAXLOT 600
 1. E. 1/4 COR SEC 28 BEARS S48°23'41"E 495.99'
 2. NORTH 120'
 3. N58°09'02"W 65.7'
 4. N31°50'58"E 100'
 5. S58°35'45"E 128.77'
 6. EAST 125.76'
 7. S7°20'10"W 114.24'
 8. S21°22'56"W 63.59'
 9. WEST 194.85'

SEE MAP 29 6 28

SEE MAP 29 6 22

SEE MAP 29 6 26

116-00

CANCELLED NO'S

SEE DEPENDENT RESURVEY 2021-1

SEE DEPENDENT RESURVEY

504,000

SEE MAP 29 6 00

4,150,000

29 6 27