

THIS MAP WAS PREPARED FOR ASSESSMENT PURPOSE ONLY.

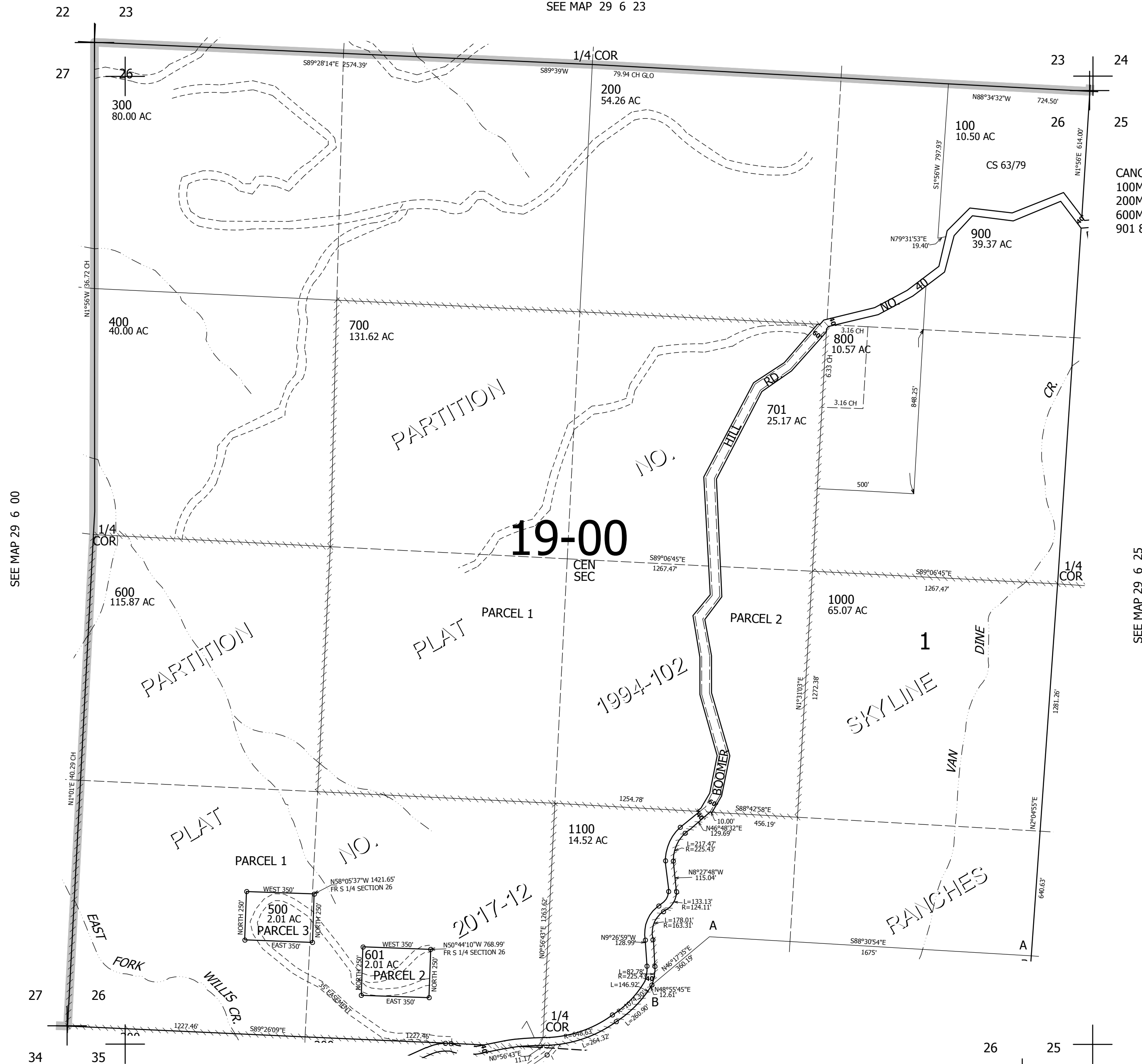
SEC.26 T.29S. R.6W. W.M.  
DOUGLAS COUNTY

REVISED ON  
6-12-17

29 6 26

1" = 400'

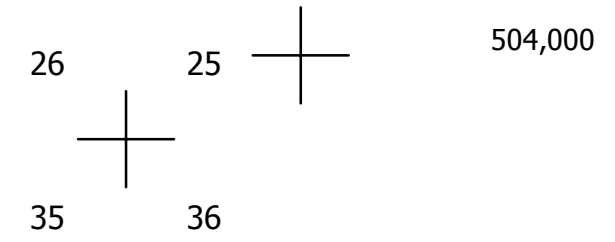
SEE MAP 29 6 23



CANCELLED NO'S  
100M1 100M2 200M1  
200M2 400M1 500M1  
600M1 800M1 800M2  
901 801 602 501

SEE MAP 29 6 00

SEE MAP 29 6 25



SEE MAP 29 6 35

4,155,000

29 6 26