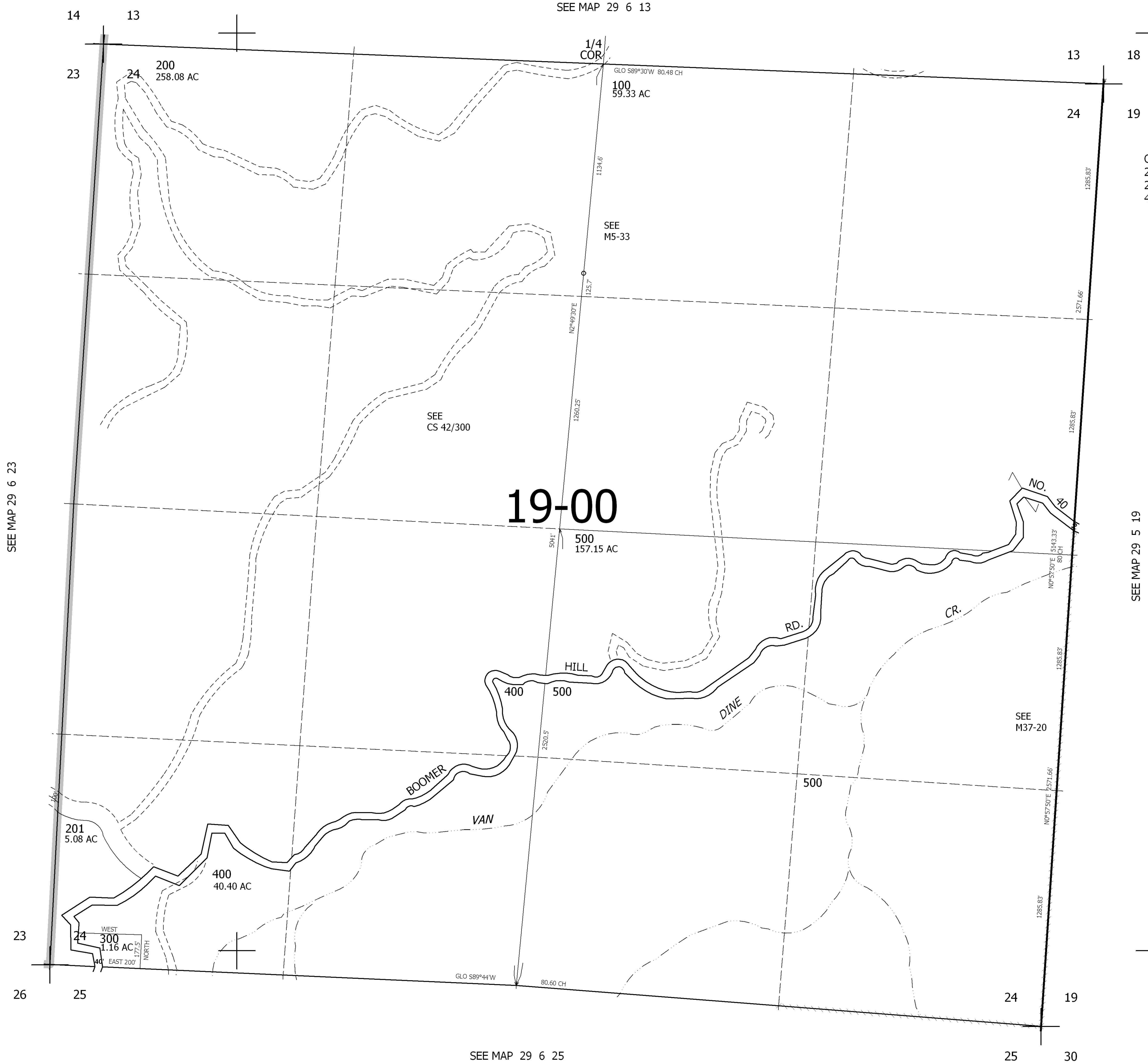


THIS MAP WAS PREPARED FOR ASSESSMENT PURPOSE ONLY.

SEC.24 T.29S. R.6W. W.M.
DOUGLAS COUNTY
1" = 400'

REVISED ON
12-1-93

29 6 24



CANCELLED NO'S
200M1 200M2 201M1
201M2 300M1 300M2
400M1 400M2

509,000

4,161,000

29 6 24