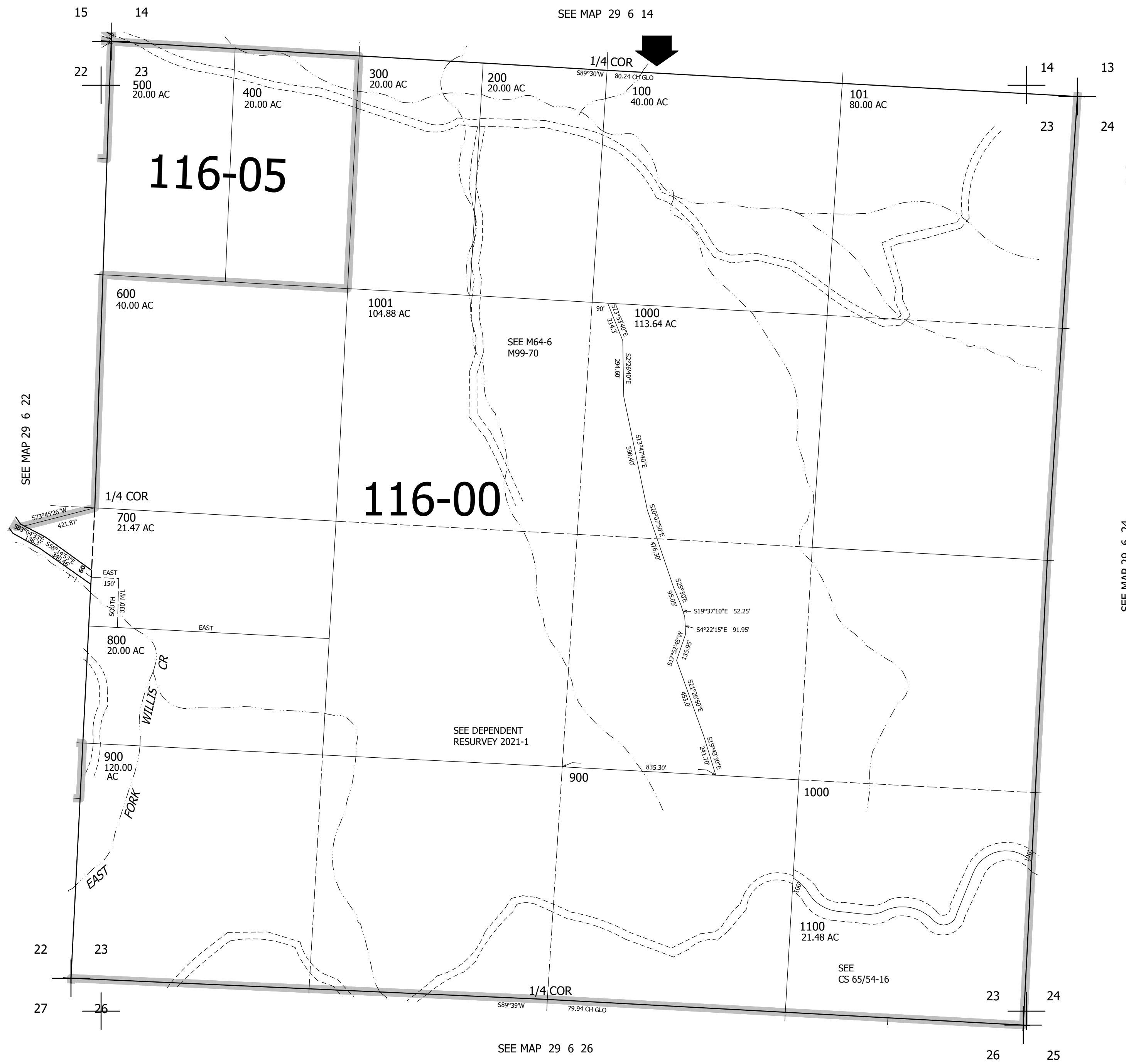


THIS MAP WAS PREPARED FOR ASSESSMENT PURPOSE ONLY.

SEC.23 T.29S. R.6W. W.M.
DOUGLAS COUNTY
1" = 400'

REVISED ON
1-20-00

29 6 23



CANCELLED NO'S
801

SEE MAP 29 6 24

509,000

29 6 23