

THIS MAP WAS PREPARED FOR ASSESSMENT PURPOSE ONLY.

Upper Left:
123°25'46"W 43°2'38"N
4138394E 515595N ft

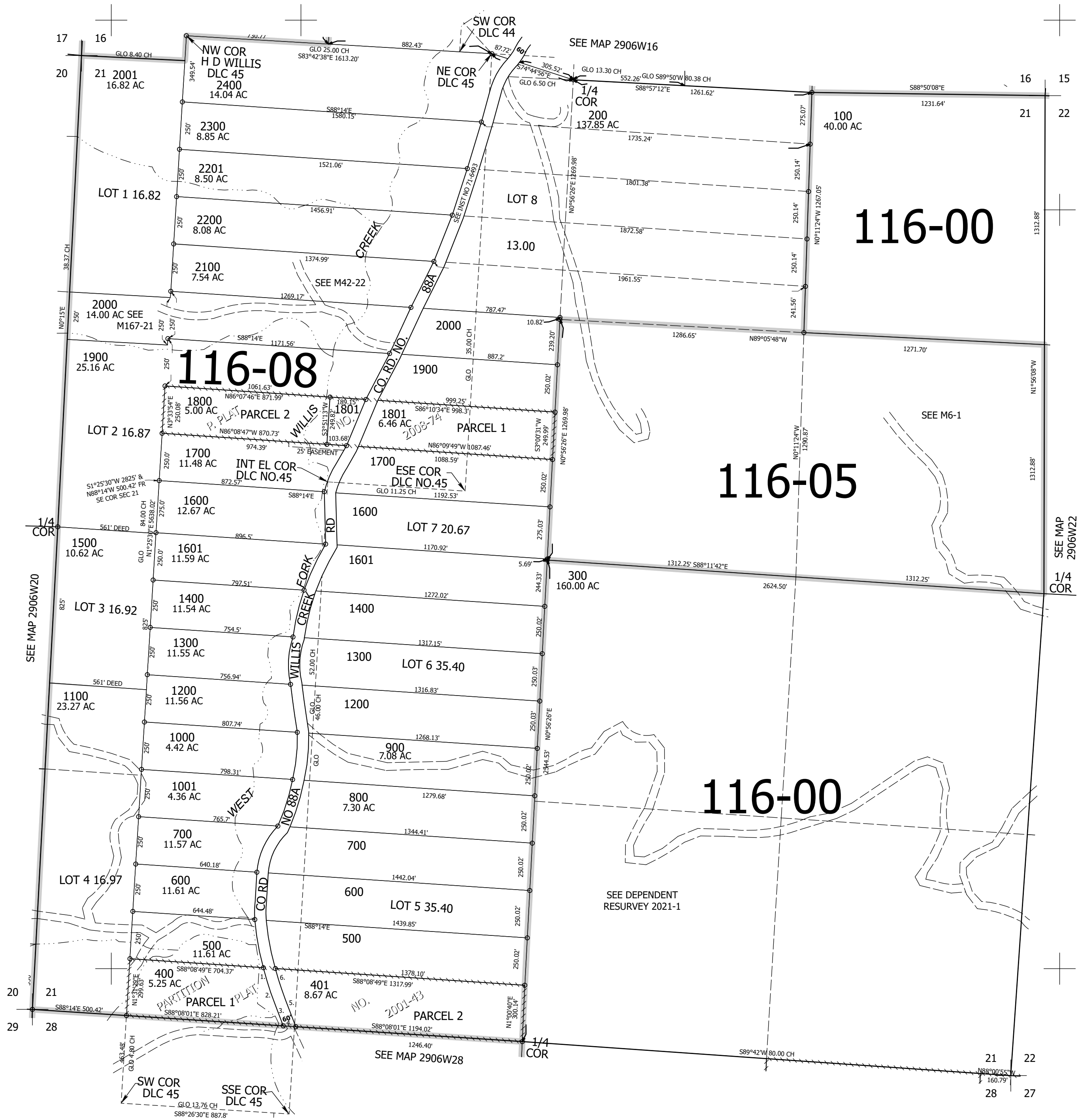
SEC.21 T.29S. R.06W. W.M.
DOUGLAS COUNTY
1" = 400'

Date Exported 2025-05-14

290621

CANCELLED NOS:

- PP 2001-43
- 1. S16°37'09"E 13.95'
- 2. LC=N19°45'52"W 182.93'
A=183.02' R=1667.02'
- 3. N22°54'35"W 128.33'
- 4. N88°08'01"W 66.08'
- 5. S22°54'35"E 156.02'
- 6. LC=S19°52'24"E 170.26'
A=170.34' R=1607.02'



290621

Lower Right:
123°23'57"W 43°1'32"N
4146243E 508640N ft