

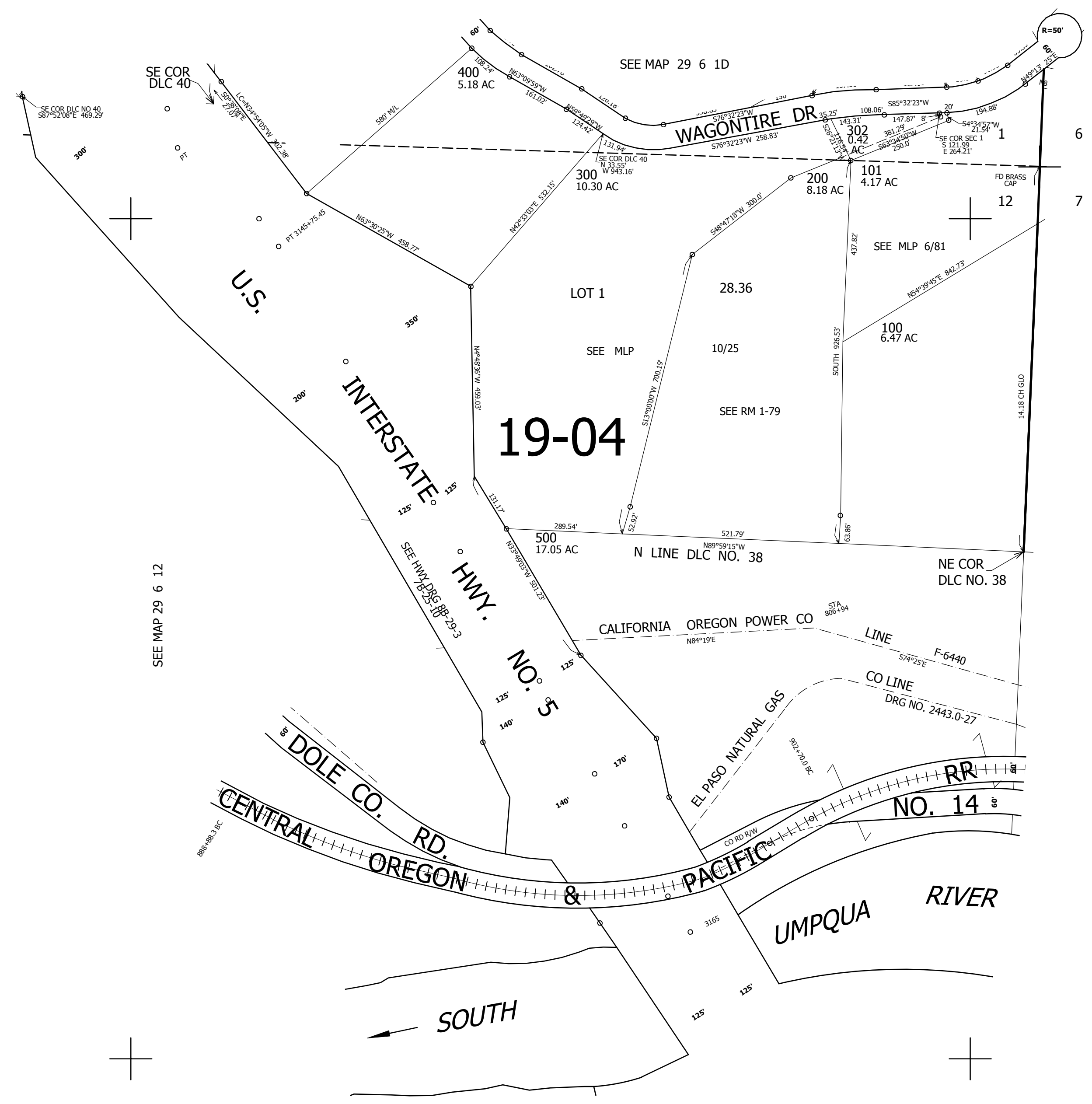
THIS MAP WAS PREPARED FOR ASSESSMENT PURPOSE ONLY.

NE1/4 SEC.12 T.29S. R.6W. W.M. DOUGLAS COUNTY
1" = 200'

REVISED ON 10-19-16

29 6 12A

1/4 COR



CANCELLED NO'S 201 202 301

SEE MAP 29 5 7

SEE MAP 29 6 12

SEE MAP 29 6 12

CEN SEC

1/4 COR

4,161,000

522,000

29 6 12A