

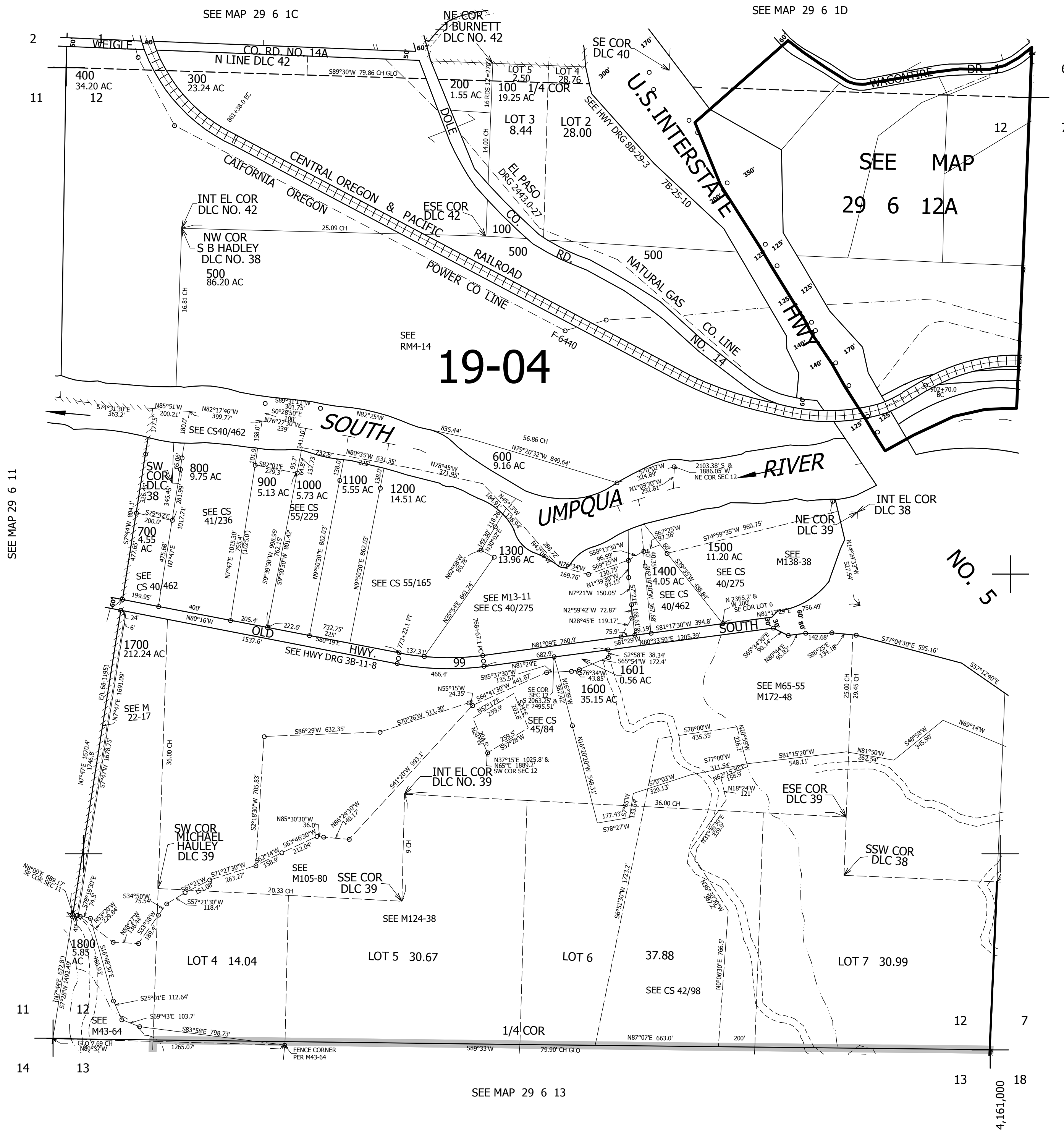
THIS MAP WAS PREPARED FOR ASSESSMENT PURPOSE ONLY.

SEC.12 T.29S. R.6W. W.M.
DOUGLAS COUNTY

1" = 400'

REVISED ON
9-27-17

29 6 12
& INDEX



CANCELLED NO'S
1701

SEE MAP 29 5 7

520,000

29 6 12
& INDEX

SEE MAP 29 6 13

4,161,000