

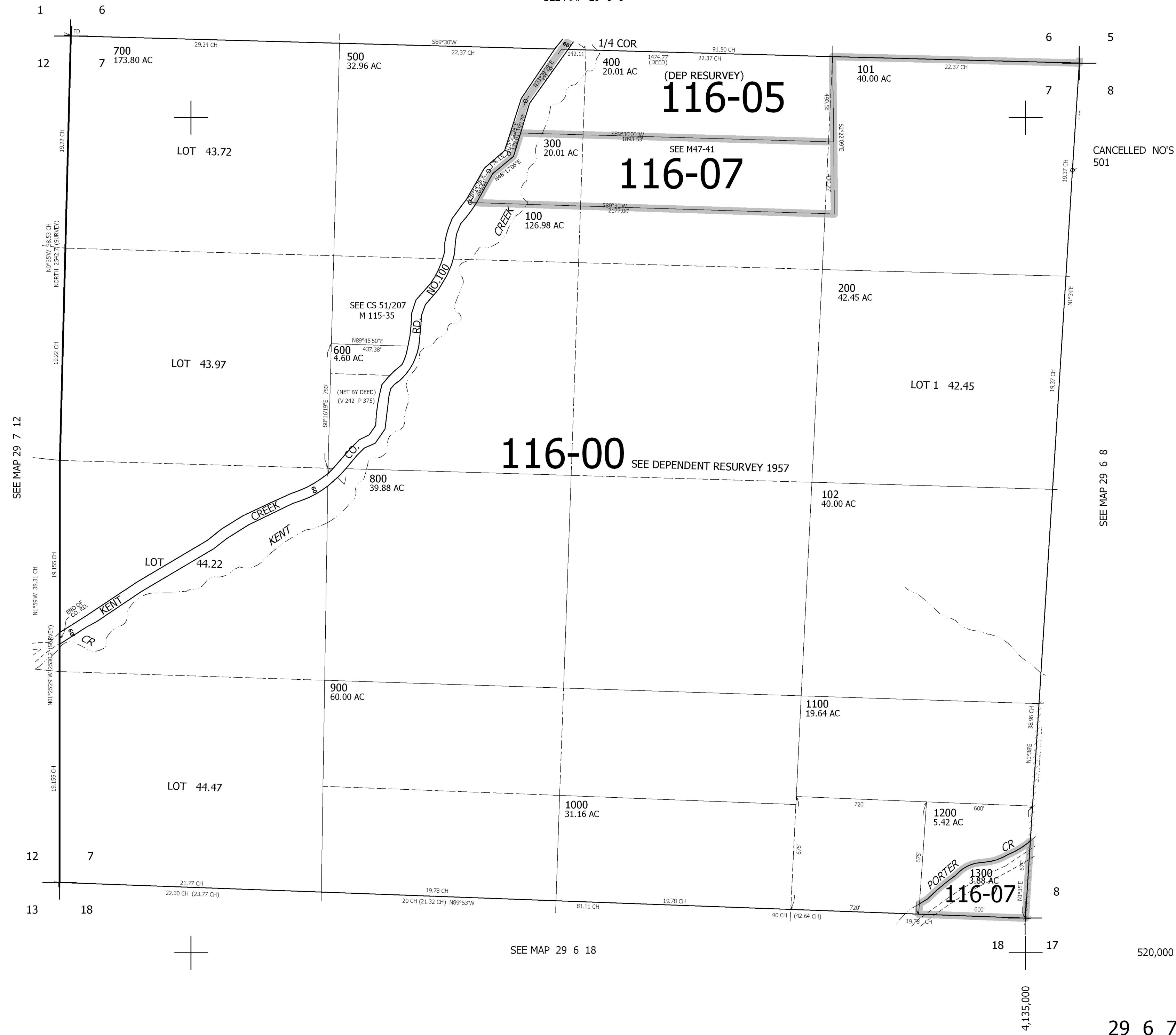
THIS MAP WAS PREPARED FOR ASSESSMENT PURPOSE ONLY.

SEC.7 T.29S. R.6W. W.M.
DOUGLAS COUNTY
1" = 400'

REVISED ON
3-13-98

29 6 7

SEE MAP 29 6 6



CANCELLED NO'S
501

SEE MAP 29 6 8

116-00 SEE DEPENDENT RESURVEY 1957

116-05
116-07

116-07

SEE MAP 29 6 18

520,000

29 6 7