

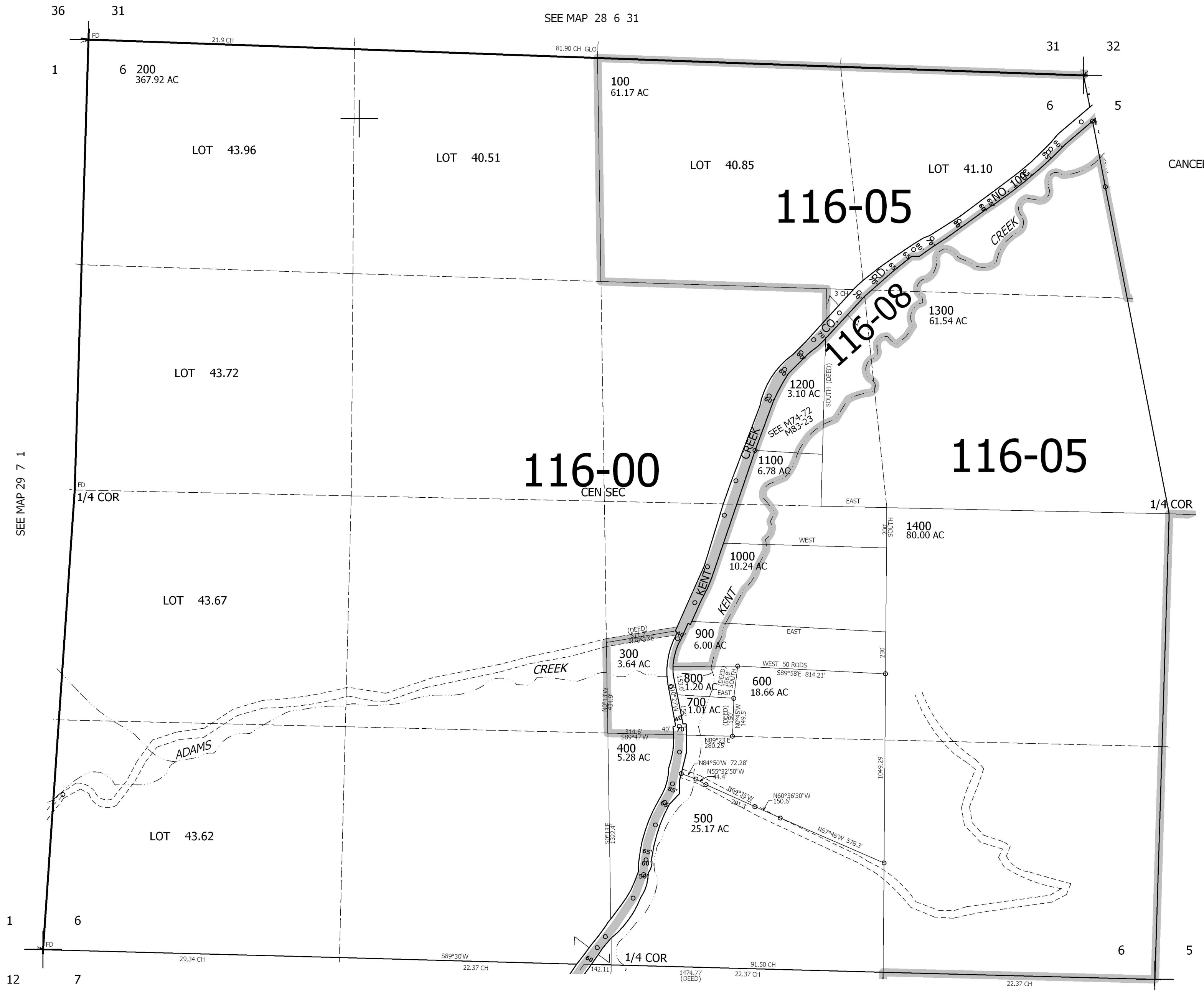
THIS MAP WAS PREPARED FOR ASSESSMENT PURPOSE ONLY.

SEC.6 T.29S. R.6W. W.M.
DOUGLAS COUNTY

1" = 400'

REVISED ON
3-13-98

29 6 6



CANCELLED NO'S

SEE MAP 29 6 5

SEE MAP 29 6 7

525,000

4,136,000

29 6 6