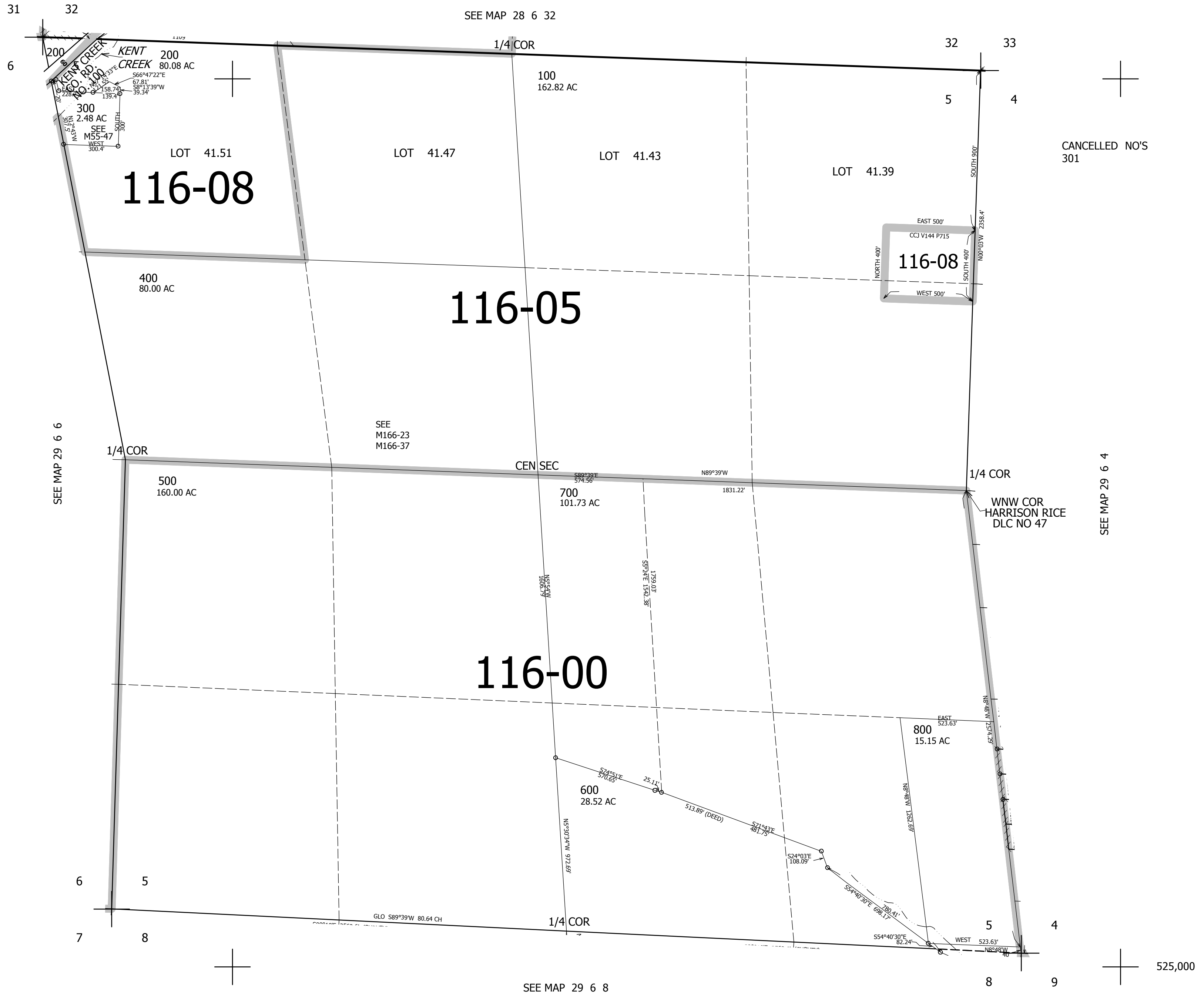


THIS MAP WAS PREPARED FOR ASSESSMENT PURPOSE ONLY.

SEC.5 T.29S. R.6W. W.M.
DOUGLAS COUNTY
1" = 400'

REVISED ON
3-13-98

29 6 5



CANCELLED NO'S
301

SEE MAP 29 6 4

525,000

4,141,000

29 6 5