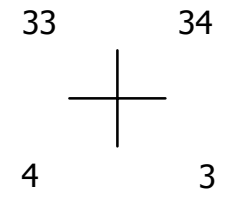
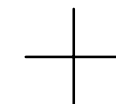
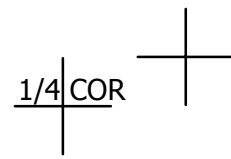


THIS MAP WAS PREPARED FOR ASSESSMENT PURPOSE ONLY.

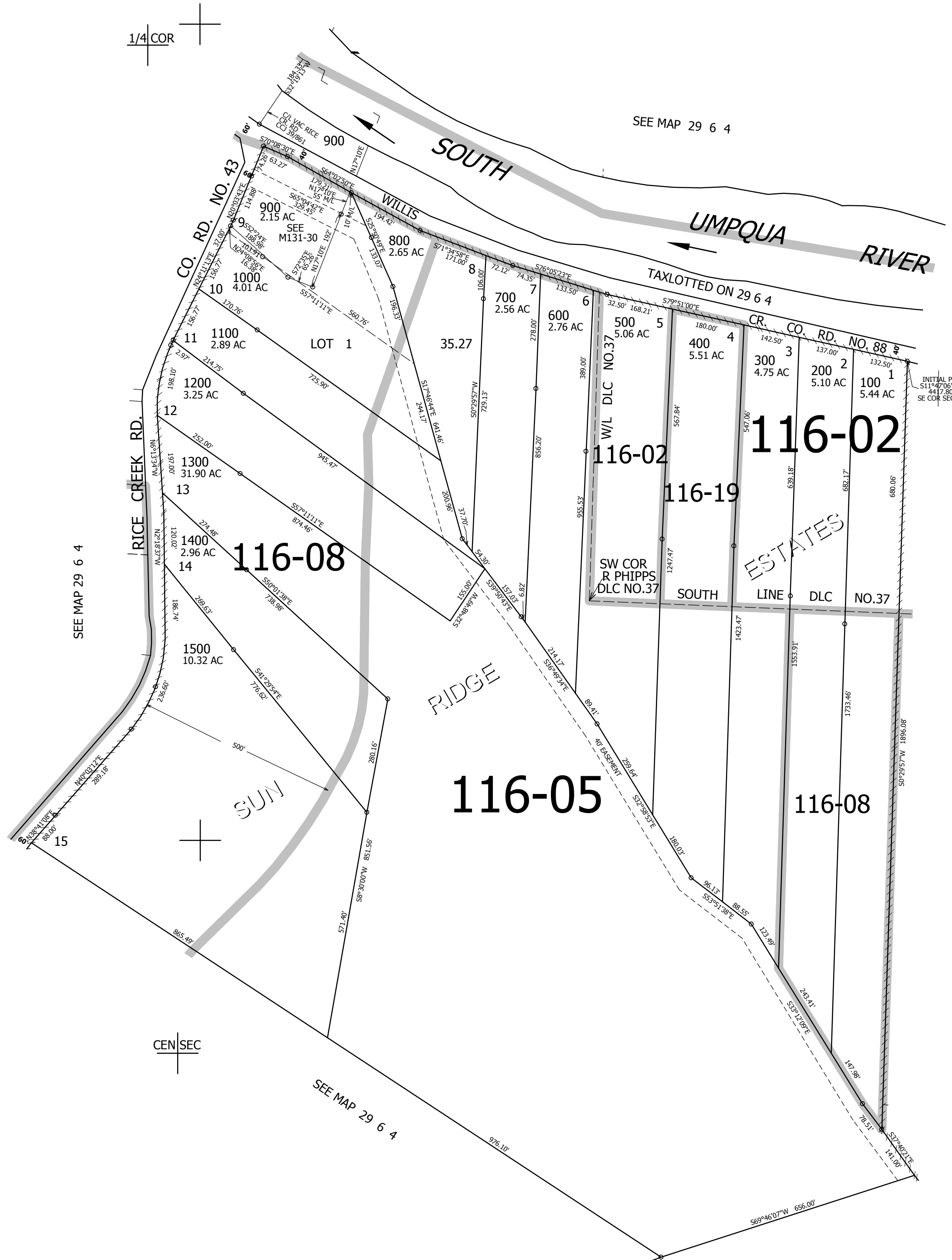
NE1/4 SEC.4 T.29S. R.6W. W.M.
DOUGLAS COUNTY
1" = 200'

REVISED ON
3-4-13

29 6 4A



CANCELLED NO'S
901 1001

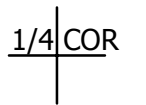


SEE MAP 29 6 4

SEE MAP 29 6 4

SEE MAP 29 6 4

SEE MAP 29 6 4



528,000

4,145,000

29 6 4A