

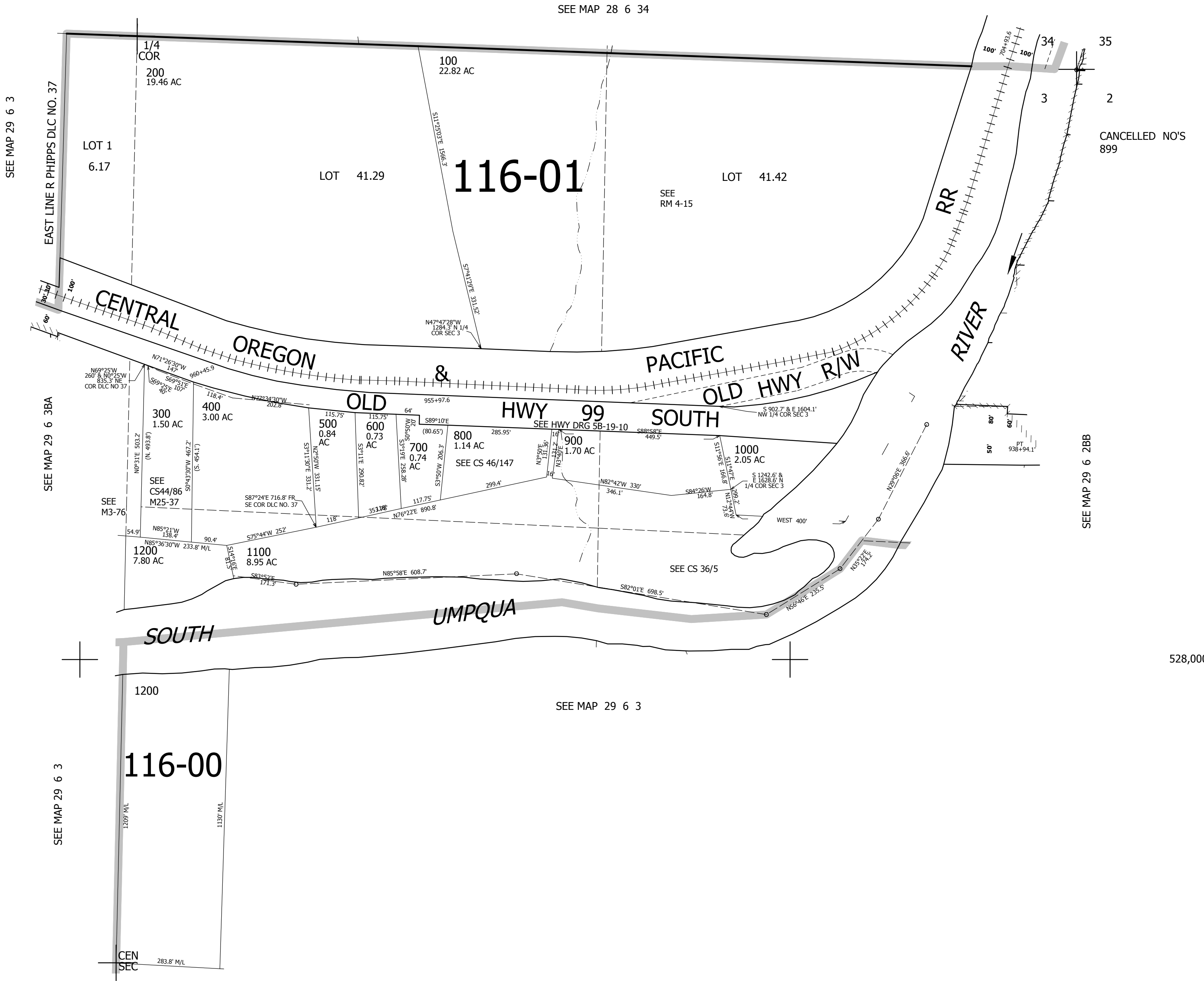
THIS MAP WAS PREPARED FOR ASSESSMENT PURPOSE ONLY.

NE1/4 SEC.3 T.29S. R.6W. W.M.
DOUGLAS COUNTY

1" = 200'

REVISED ON
10-20-16

29 6 3A



SEE MAP 29 6 3

SEE MAP 29 6 3BA

SEE MAP 29 6 3

SEE MAP 29 6 34

SEE MAP 29 6 3

SEE MAP 29 6 2BB

CANCELLED NO'S
899

528,000

1/4 COR

4,150,000

29 6 3A