

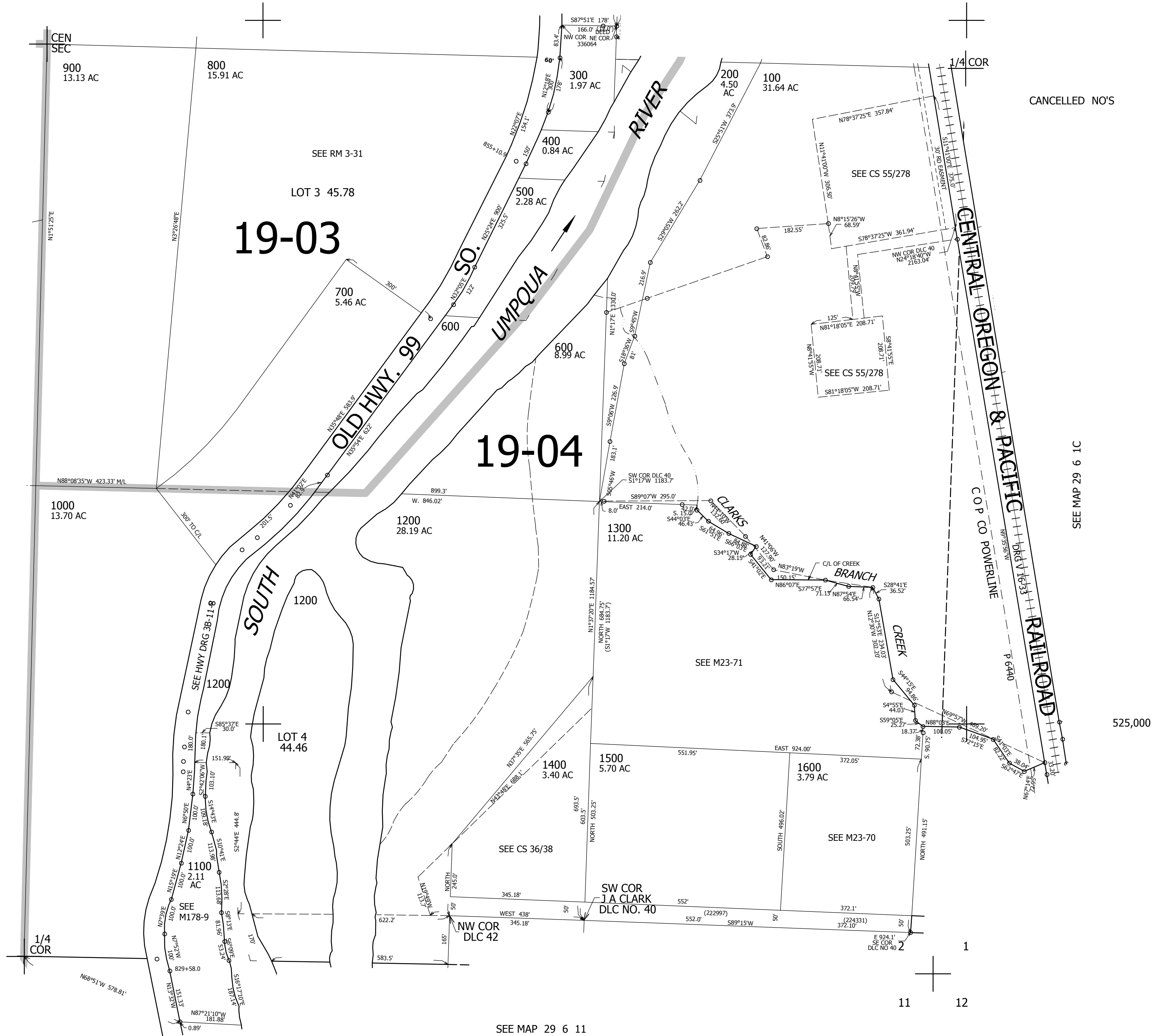
THIS MAP WAS PREPARED FOR ASSESSMENT PURPOSE ONLY.

SE1/4 SEC.2 T.29S. R.6W. W.M.
DOUGLAS COUNTY
1" = 200'

REVISED ON
12-27-16

29 6 2D

SEE MAP 29 6 2A



CANCELLED NO'S

SEE MAP 29 6 2

SEE MAP 29 6 1C

525,000

SEE MAP 29 6 11

4,156,000

29 6 2D