

THIS MAP WAS PREPARED FOR ASSESSMENT PURPOSE ONLY.

NW1/4 NW1/4 SEC.2 T.29S. R.6W. W.M.  
DOUGLAS COUNTY

REVISED ON  
6-11-20

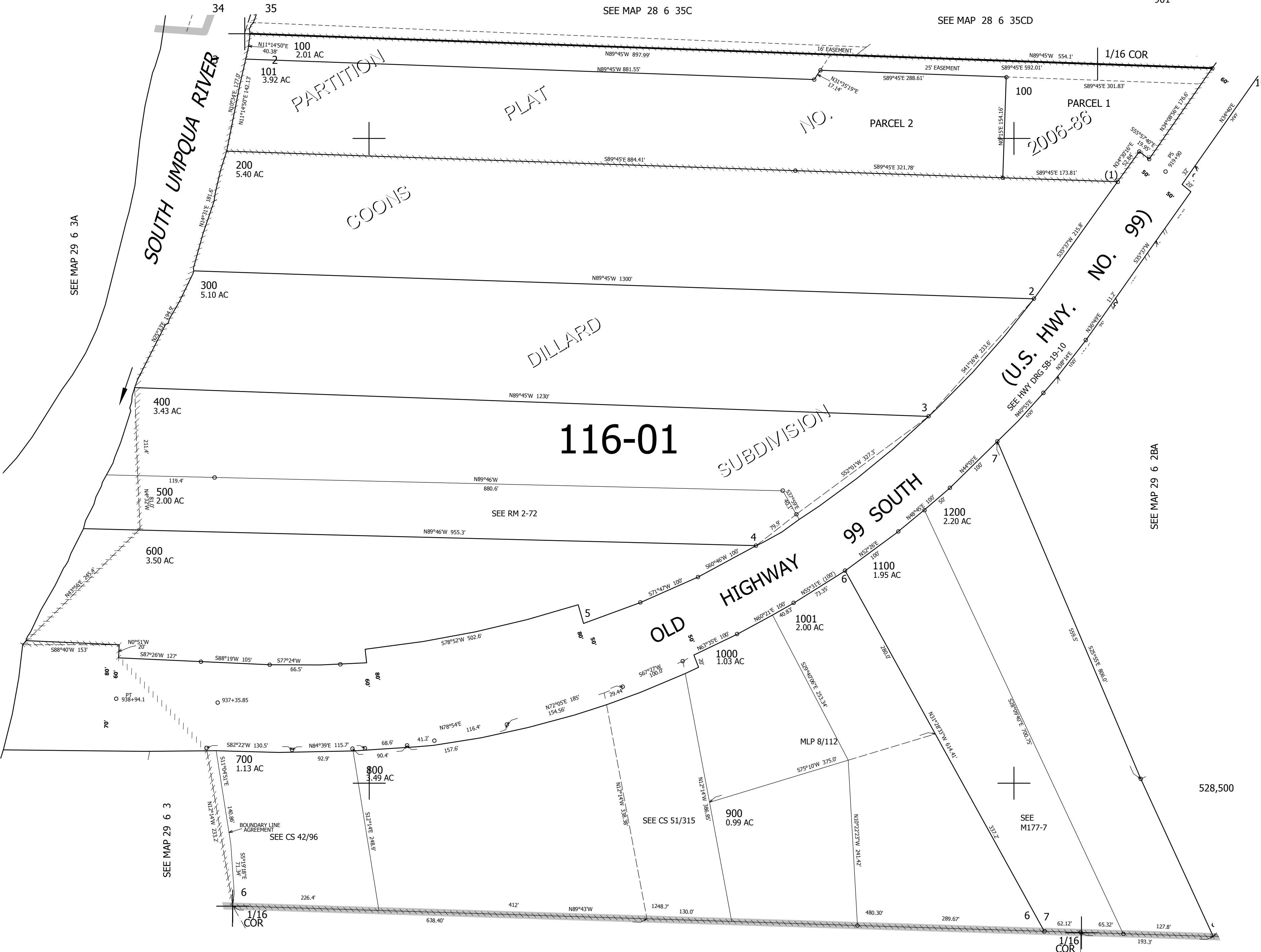
29 6 2BB

1" = 100'

CANCELLED NO'S  
901

SEE MAP 28 6 35C

SEE MAP 28 6 35CD



SEE MAP 29 6 3A

SEE MAP 29 6 3

SEE MAP 29 6 2

SEE MAP 29 6 2BA

4,152,000

29 6 2BB