

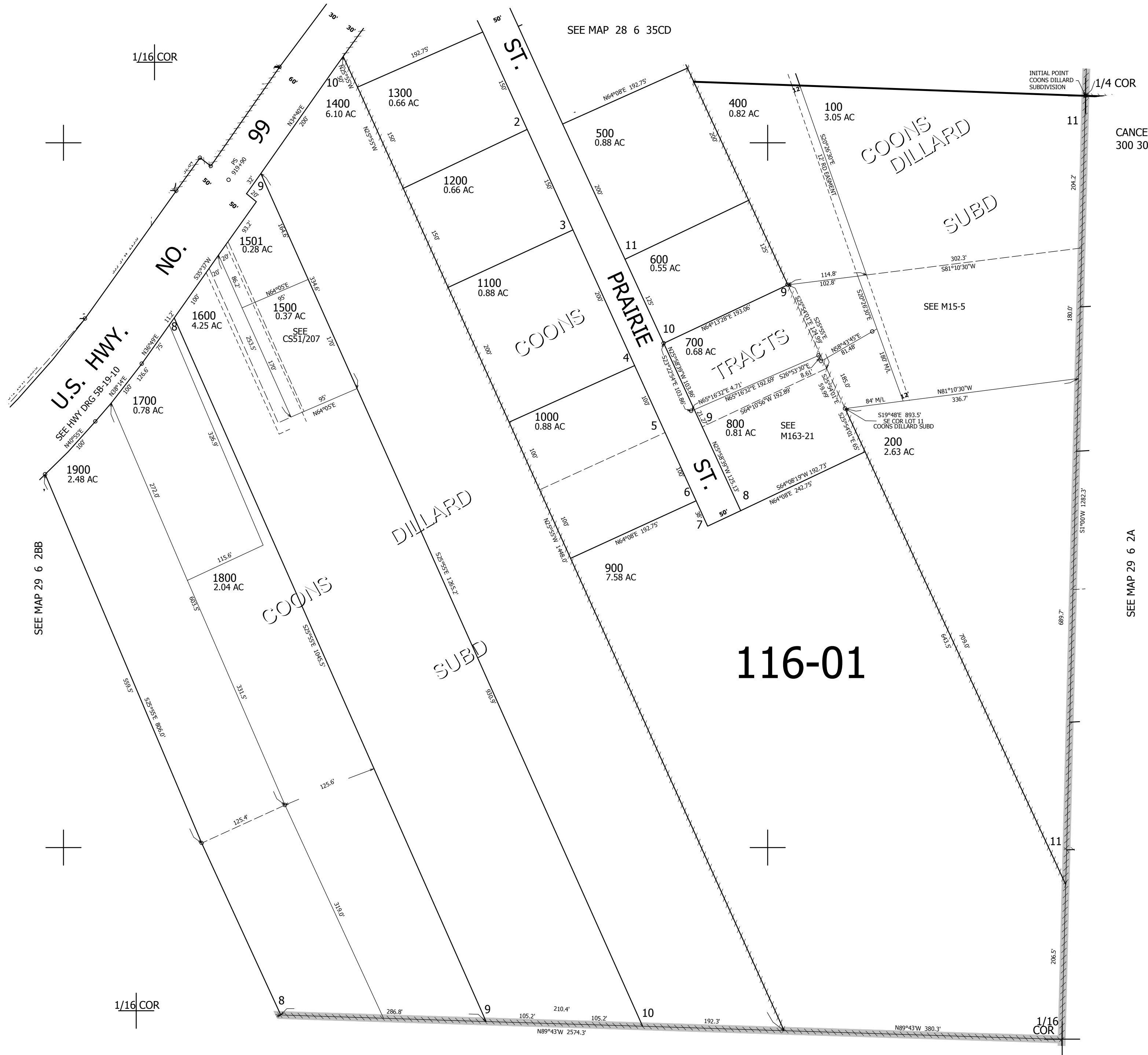
THIS MAP WAS PREPARED FOR ASSESSMENT PURPOSE ONLY.

NE1/4 NW1/4 SEC.2 T.29S. R.6W. W.M.
DOUGLAS COUNTY

1" = 100'

REVISED ON
2-15-12

29 6 2BA



116-01

528,500

SEE MAP 29 6 2

4,153,000

29 6 2BA