

THIS MAP WAS PREPARED FOR ASSESSMENT PURPOSE ONLY.

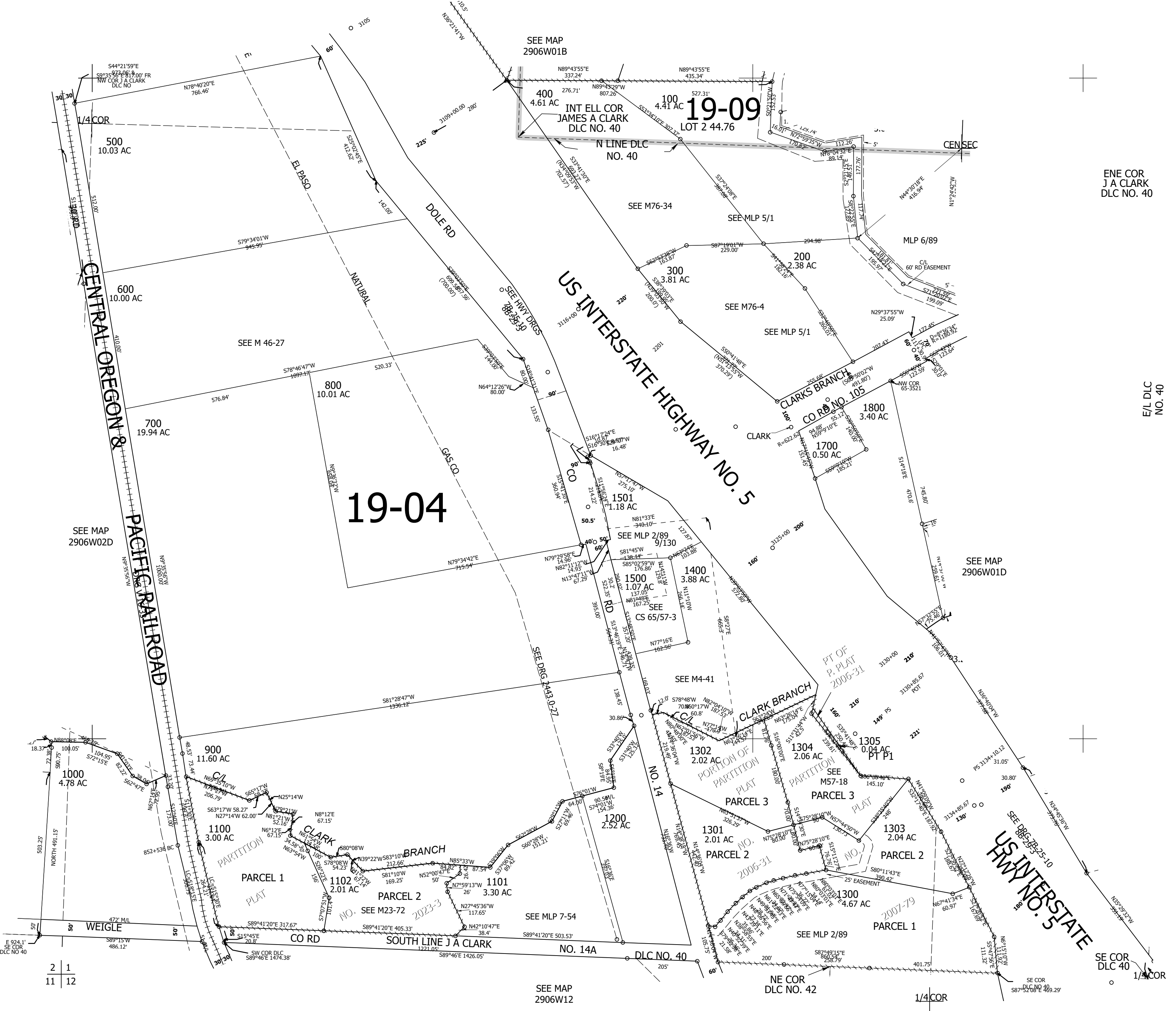
Upper Left:  
123°22'1"W 43°4'41"N  
4155520E 527454N ft

SW1/4 SEC.01 T.29S. R.06W. W.M.  
DOUGLAS COUNTY  
1" = 200'

Date Exported: 2/9/2023 12:25 PM

2906W01C  
&

CANCELLED NOS:  
1600 1103



ENE COR  
J A CLARK  
DLC NO. 40

E/L DLC  
NO. 40

2 1  
11 12

SEE MAP  
2906W12

NE COR  
DLC NO. 42

1/4 COR

SE COR  
DLC NO. 40

1/4 COR

Lower Right:  
123°21'7"W 43°4'8"N  
4159398E 523967N ft

2906W01C  
&