

THIS MAP WAS PREPARED FOR ASSESSMENT PURPOSE ONLY.

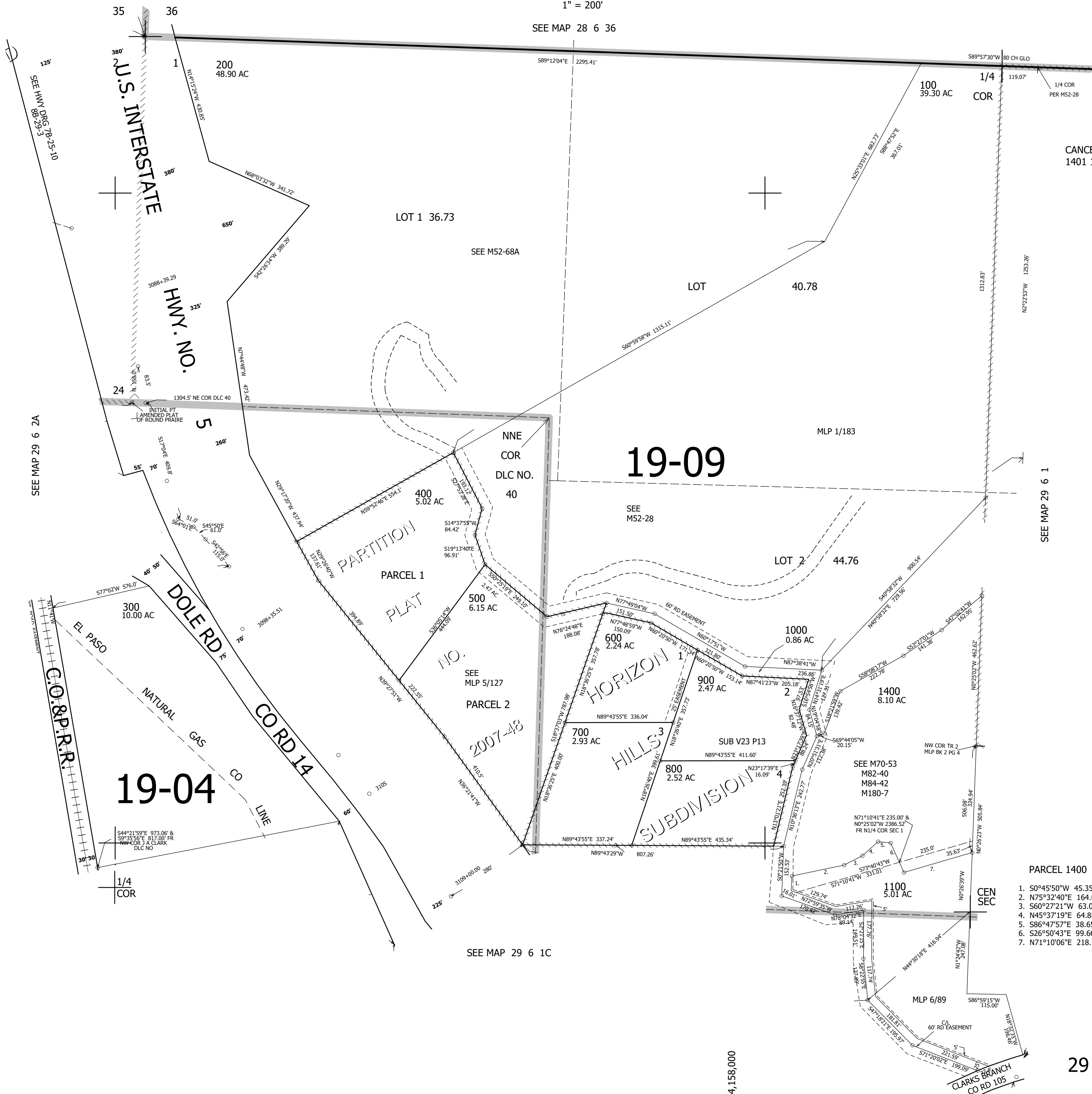
NW1/4 SEC.1 T.29S. R.6W. W.M. DOUGLAS COUNTY

REVISED ON
11-23-21

29 6 1B

1" = 200'

SEE MAP 28 6 36



CANCELLED NO'S
1401 1200 1300

19-09

19-04

- PARCEL 1400
- 50°45'50"W 45.35'
 - N75°32'40"E 164.03'
 - S60°27'21"W 63.06'
 - N45°37'19"E 64.88'
 - S86°47'57"E 38.65'
 - S26°50'43"E 99.66'
 - N71°10'06"E 218.75'

527,000

29 6 1B

SEE HWY DRG 7B-25-10
SEE HWY BR-29-3

SEE MAP 29 6 2A

SEE MAP 29 6 1

SEE MAP 29 6 1C

4,158,000