

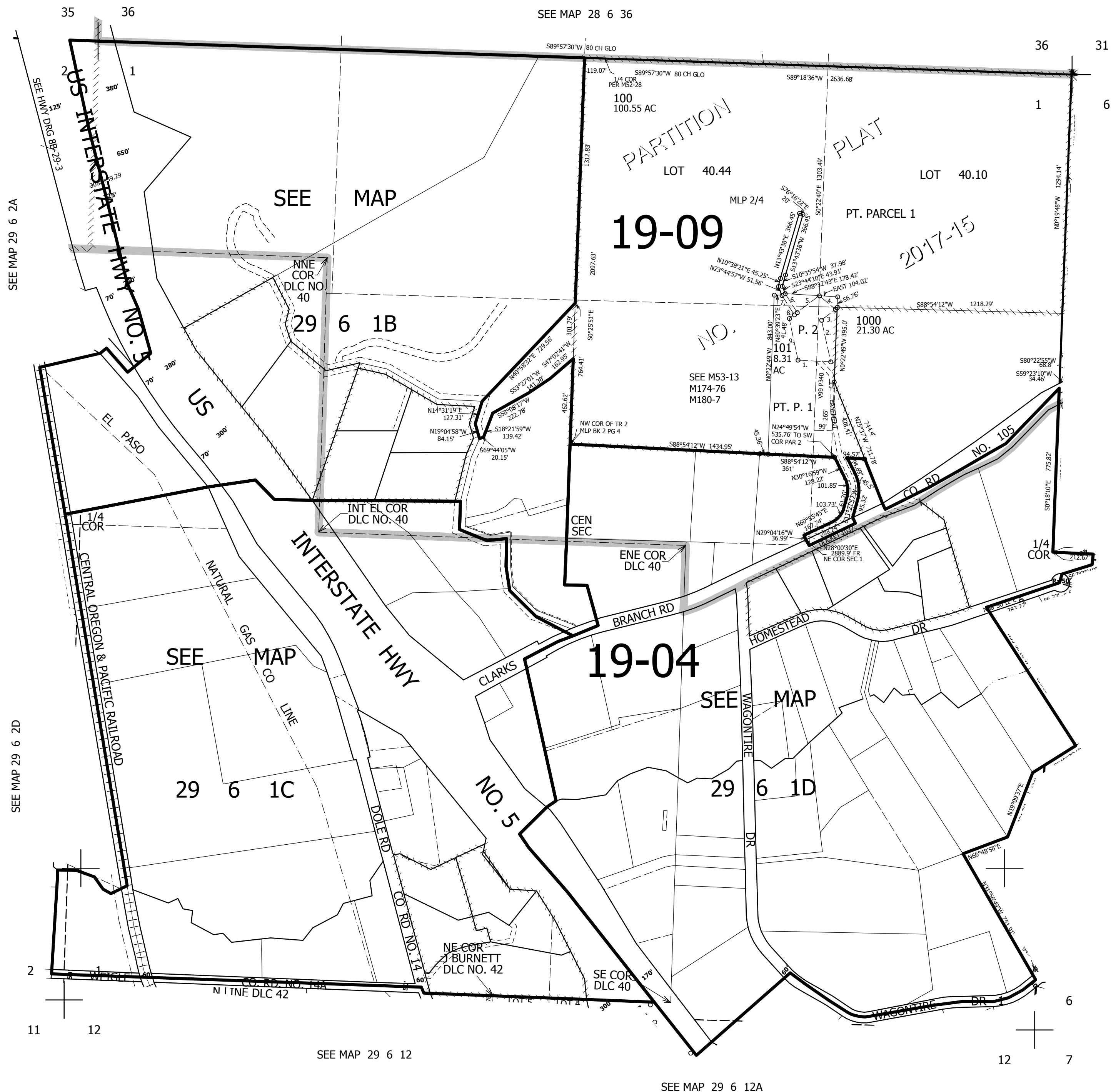
THIS MAP WAS PREPARED FOR ASSESSMENT PURPOSE ONLY.

SEC.1 T.29S. R.6W. W.M.  
DOUGLAS COUNTY

1" = 400'

REVISED ON  
11-23-21

29 6 1  
& INDEX



CANCELLED NO'S  
1100 1100M1 200  
300 400 500 501  
502 600 700 800  
900 901 102

PARCEL 101  
PP 2017-15

1. N89°52'40"E 177.39'
2. N15°33'46"W 231.23'
3. N49°41'10"E 95.18'
4. S2°36'44"W 115.65'
5. S49°41'10"W 150.15'
6. N32°08'13"W 120.07'
7. S32°08'13"E 124.41'
8. S49°41'10"W 33.34'
9. S14°52'31"E 230.89'

SEE MAP 29 5 6

525,000

29 6 1  
& INDEX

4,161,000

SEE MAP 29 6 2A

SEE MAP 29 6 2D

SEE MAP 29 6 12

SEE MAP 29 6 12A

SEE MAP 28 6 36