

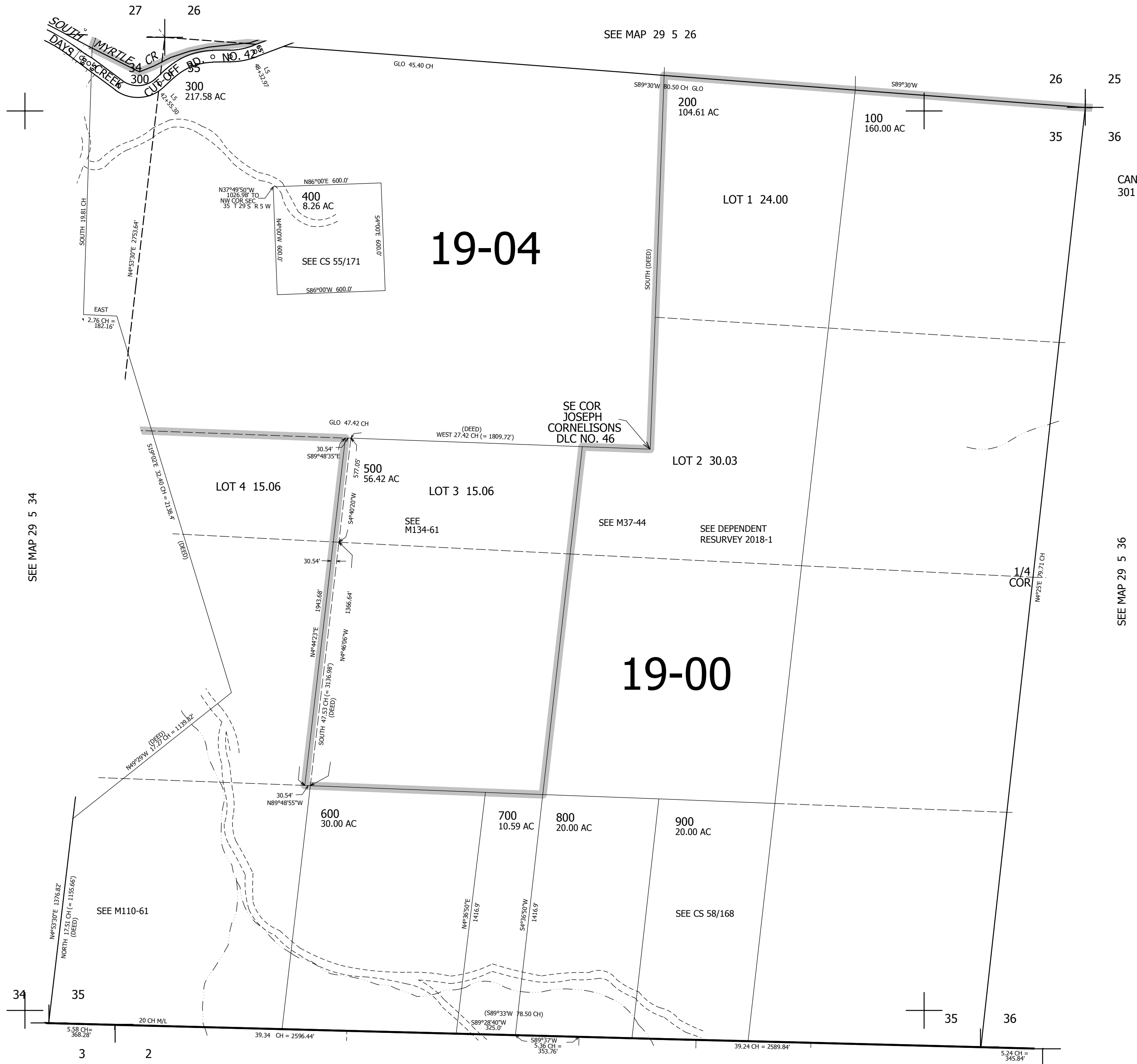
THIS MAP WAS PREPARED FOR ASSESSMENT PURPOSE ONLY.

SEC.35 T.29S. R.5W. W.M.  
DOUGLAS COUNTY

1" = 400'

REVISED ON  
2-25-15

29 5 35



CANCELLED NO'S  
301

SEE MAP 29 5 36

497,500

4,186,000

SEE MAP 30 5 2

29 5 35