

THIS MAP WAS PREPARED FOR ASSESSMENT PURPOSE ONLY.

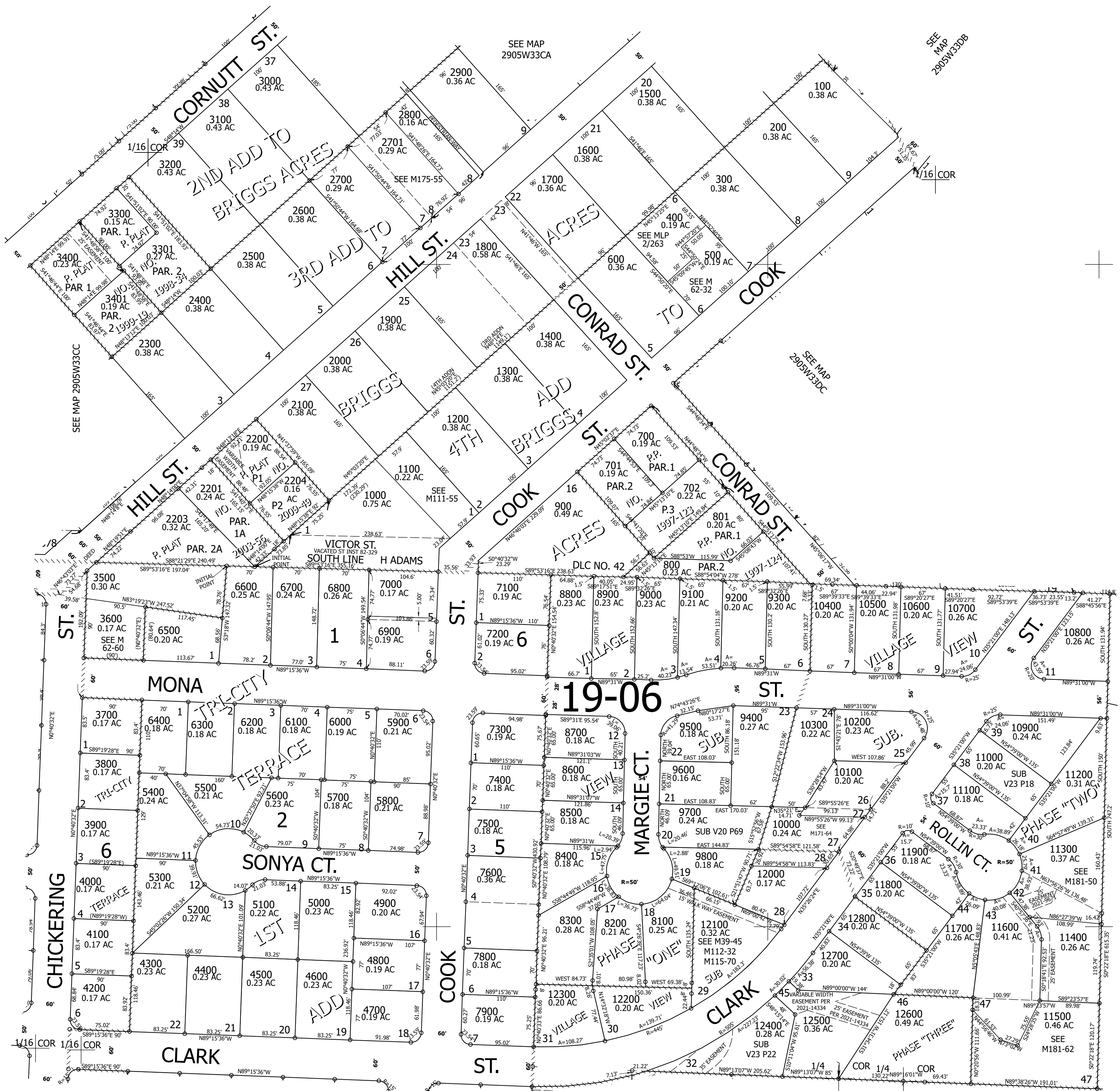
Upper Left:
123°18'3"W 43°0'10"N
4172206E 499440N ft

SE1/4 SW1/4 SEC.33 T.29S. R.05W. W.M.
DOUGLAS COUNTY
1" = 100'

Date Exported 2024-06-25

290533CD
Myrtle Creek

CANCELLED NOS:
802 2202 7001
8000 THRU 8045
9900 THRU 9907
7700 10001 12001
11501 11401



SEE MAP 3005W04BA

SEE MAP 3005W04

290533CD
Myrtle Creek

Lower Right:
123°17'36"W 42°59'53"N
4174168E 497701N ft