

THIS MAP WAS PREPARED FOR ASSESSMENT PURPOSE ONLY.

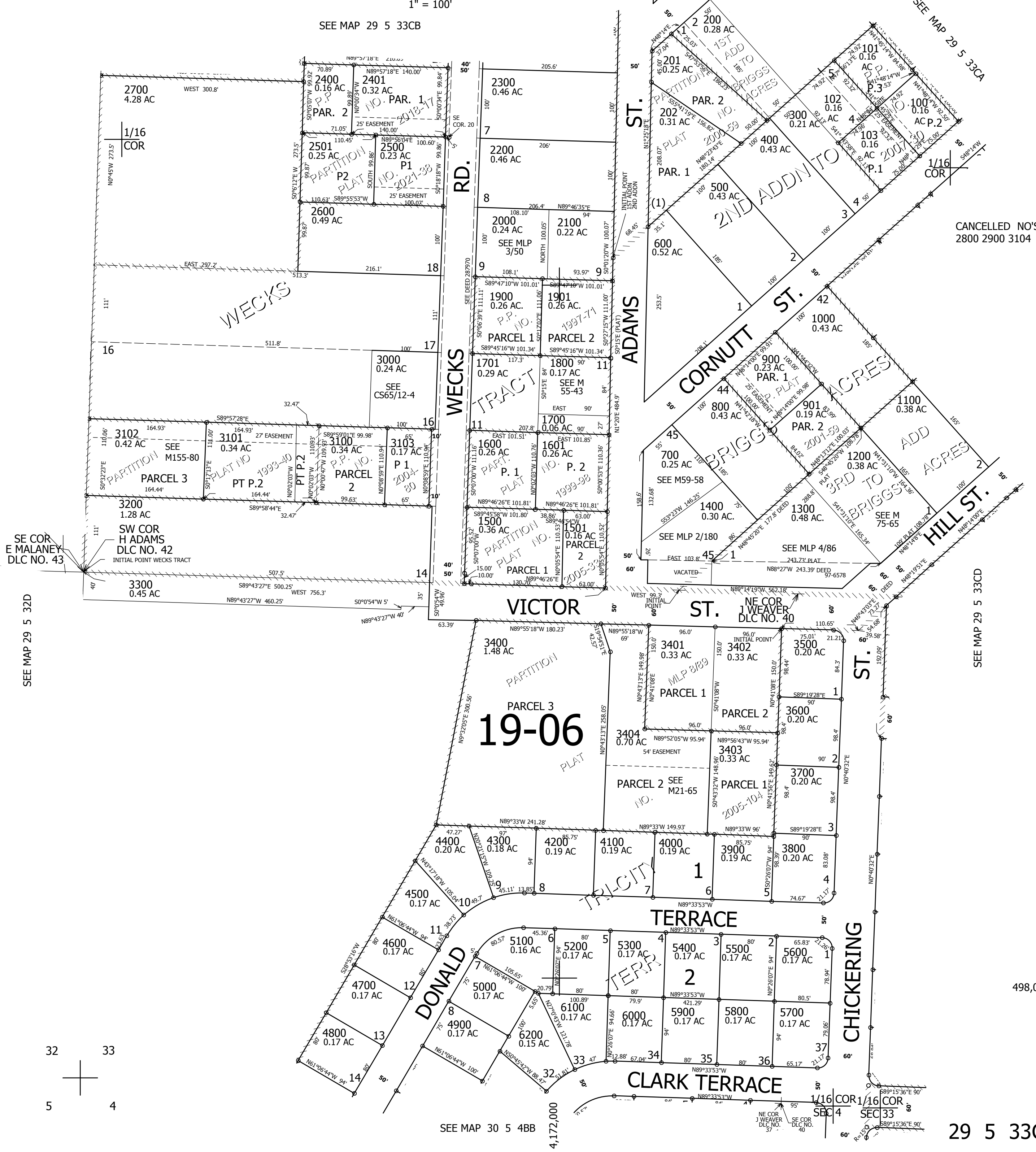
SW1/4 SW1/4 SEC.33 T.29S. R.5W. W.M. DOUGLAS COUNTY

REVISED ON
10-28-21

29 5 33CC

1" = 100'

SEE MAP 29 5 33CB



CANCELLED NO'S
2800 2900 3104

SEE MAP 29 5 33CC

SEE MAP 29 5 32D

SEE MAP 30 5 4BB

498,000

29 5 33CC

