

NW1/4 SW1/4 SEC.33 T.29S. R.5W. W.M.
DOUGLAS COUNTY
1" = 100'

REVISED ON
5-20-13

29 5 33CB
MYRTLE CREEK

THIS MAP WAS PREPARED FOR
ASSESSMENT PURPOSE ONLY.

SEE MAP 29 5 33

SEE MAP 29 5 33BD

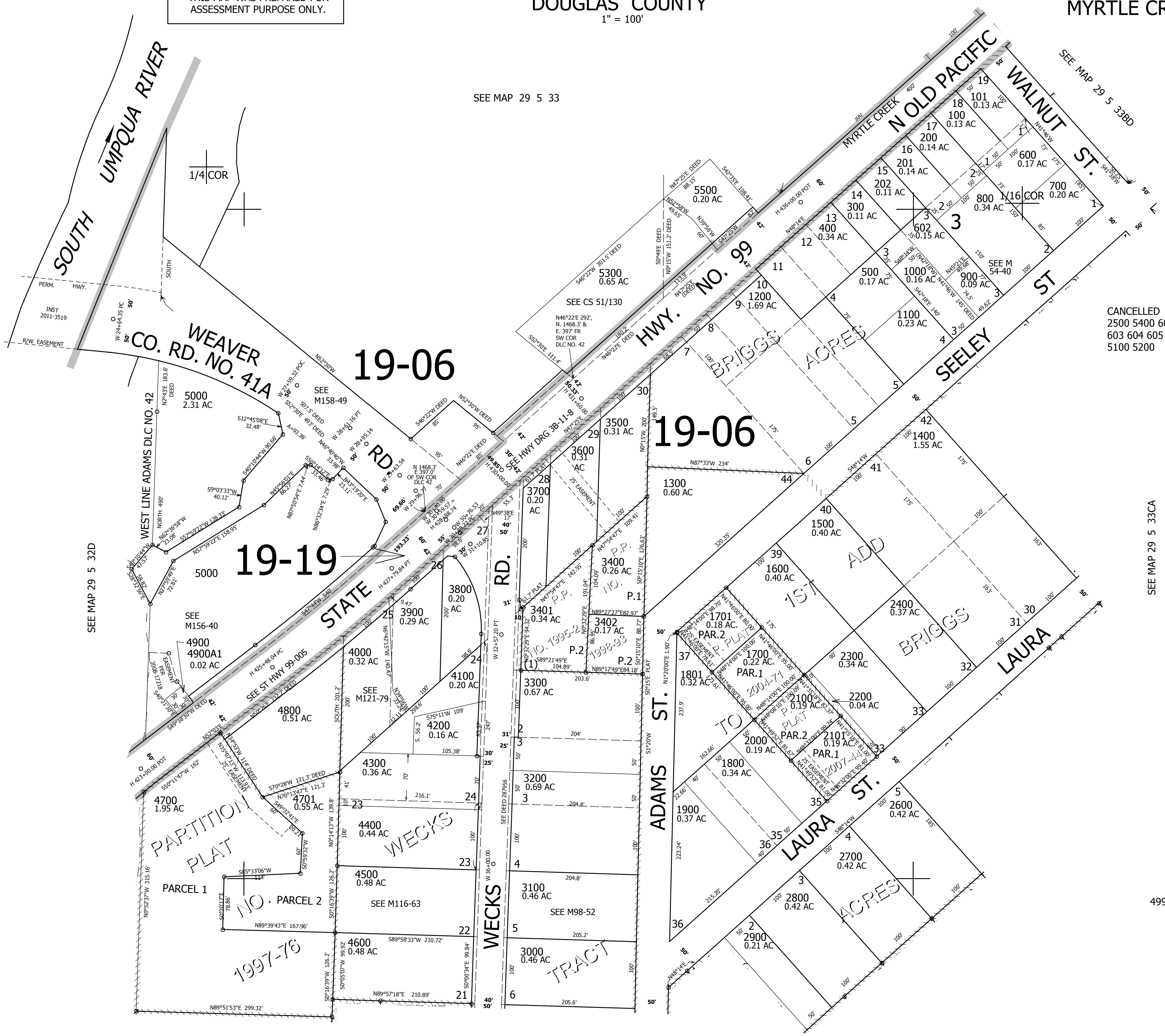
CANCELLED NOS
2500 5400 601
603 604 605
5100 5200

SEE MAP 29 5 33CA

499,500

SEE MAP 29 5 33CC

4,172,500



1/16 COR

1/16 COR

29 5 33CB
MYRTLE CREEK