

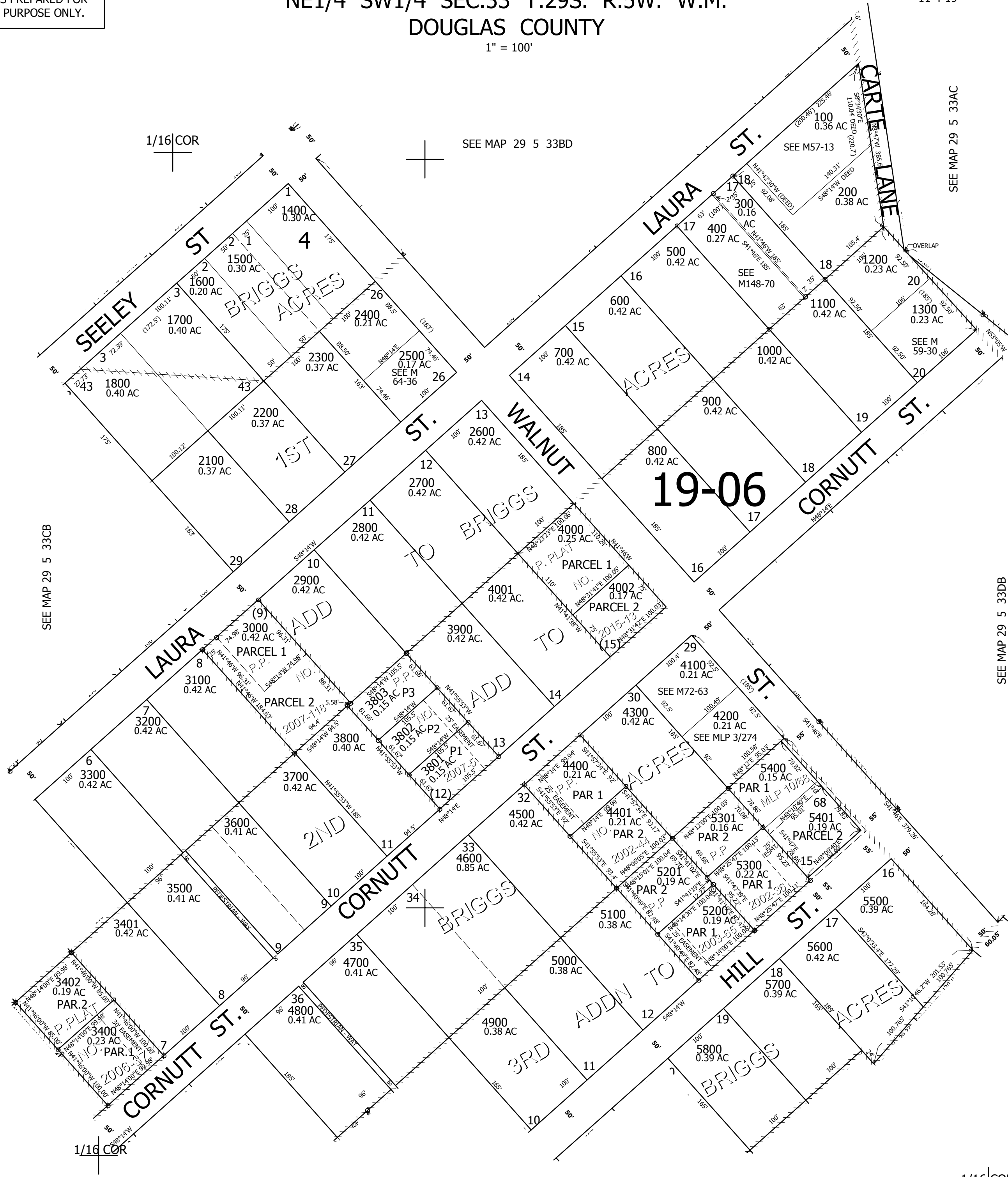
THIS MAP WAS PREPARED FOR ASSESSMENT PURPOSE ONLY.

NE1/4 SW1/4 SEC.33 T.29S. R.5W. W.M.
DOUGLAS COUNTY

1" = 100'

REVISED ON
11-4-19

29 5 33CA



CANCELLED NO'S
1900 2000 5402
401 3001

499,500

4,174,000

29 5 33CA