

THIS MAP WAS PREPARED FOR ASSESSMENT PURPOSE ONLY.

Upper Left:  
123°17'53"W 43°0'48"N  
4173118E 503295N ft

NE1/4 SEC.33 T.29S. R.05W. W.M.  
DOUGLAS COUNTY

Date Exported 2025-08-13

290533A  
& INDEX  
Myrtle Creek

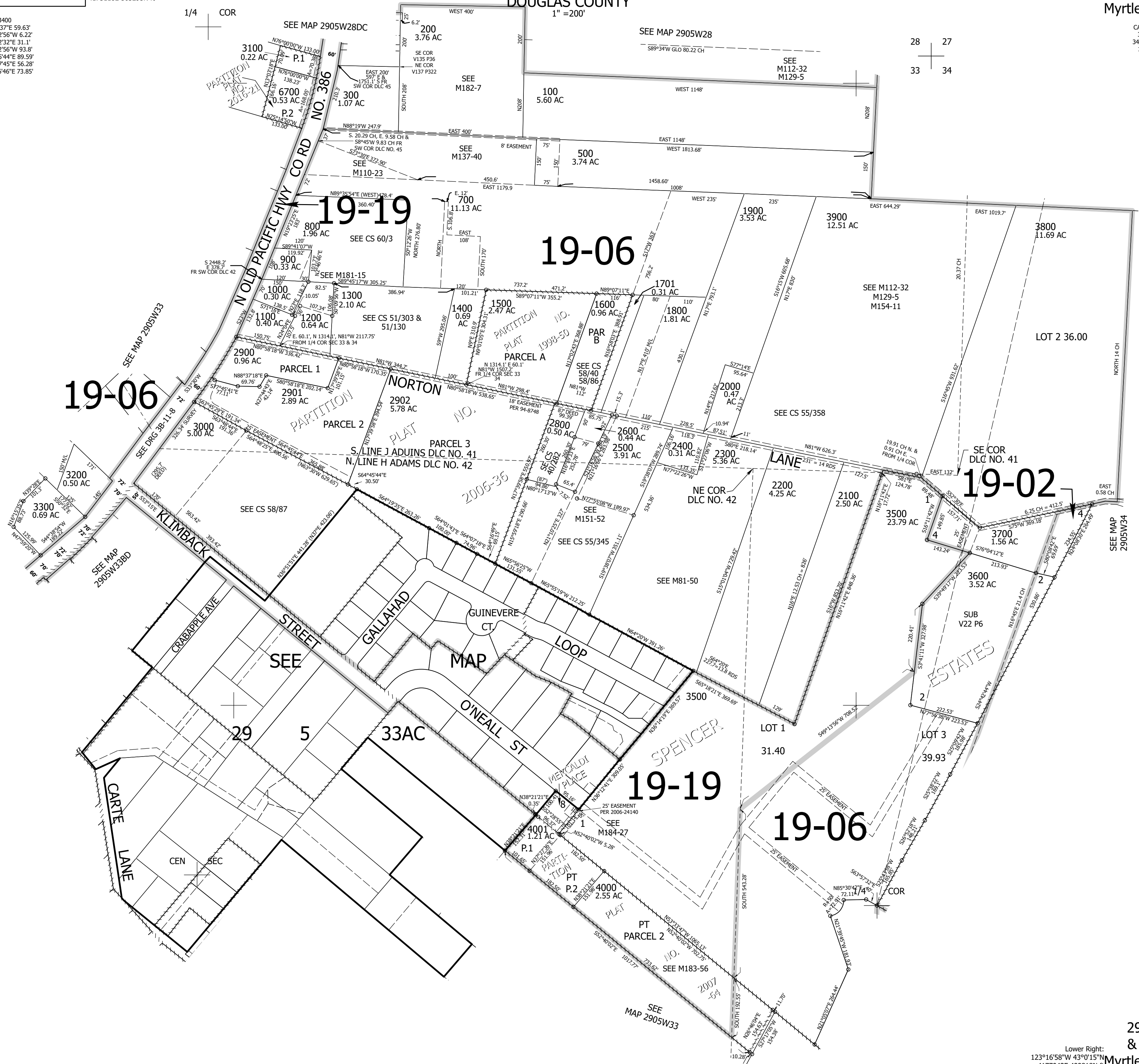
CANCELLED NOS:  
3301 2701 2501  
3400 400 600 701  
1700 2700 1101  
4002

- TAXLOT 3400
1. S7°55'37"E 59.63'
  2. S40°42'56"W 6.22'
  3. S64°32'32"E 31.1'
  4. S40°42'56"W 93.8'
  5. S58°15'44"E 89.59'
  6. S70°47'45"E 56.28'
  7. S64°16'46"E 73.85'

1/4 COR

1" = 200'

28 27  
33 34



290533A  
& INDEX  
Myrtle Creek

Lower Right:  
123°16'58"W 43°0'15"N  
4177043E 499818N ft