

THIS MAP WAS PREPARED FOR ASSESSMENT PURPOSE ONLY.

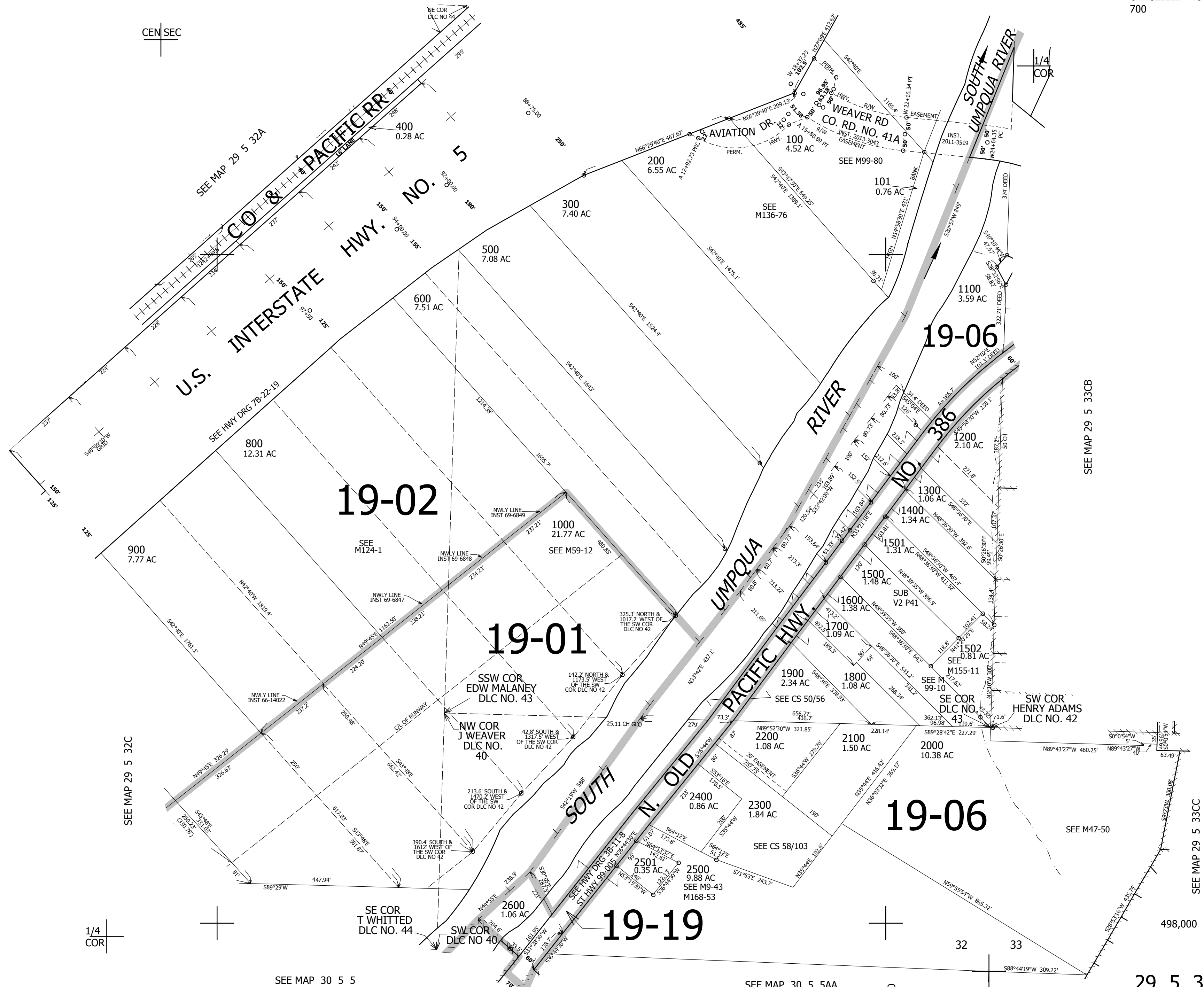
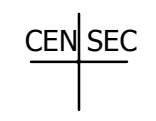
SE1/4 SEC.32 T.29S. R.5W. W.M.
DOUGLAS COUNTY
1" = 200'

REVISED ON
7-23-19

29 5 32D
MYRTLE CREEK

SEE MAP 29 5 32A

CANCELLED NO'S
700



SEE MAP 29 5 32C

SEE MAP 29 5 33CB

SEE MAP 29 5 33CC



SEE MAP 30 5 5

SEE MAP 30 5 5AB

SEE MAP 30 5 5AA

4,171,000

29 5 32D
MYRTLE CREEK