

THIS MAP WAS PREPARED FOR ASSESSMENT PURPOSE ONLY.

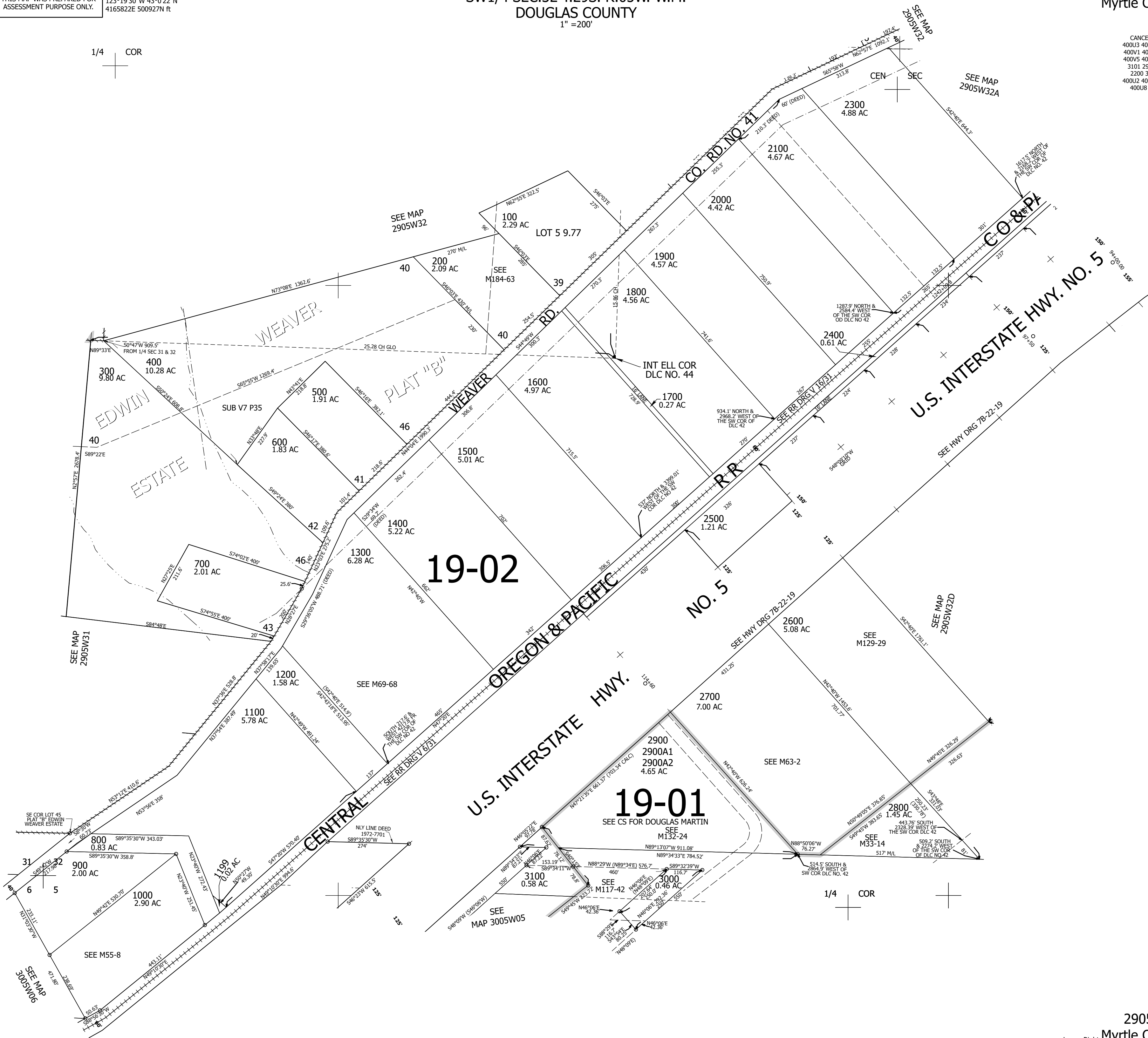
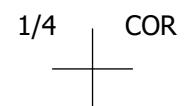
Upper Left:
123°19'30"W 43°0'22"N
4165822E 500927N ft

SW1/4 SEC.32 T.29S. R.05W. W.M.
DOUGLAS COUNTY
1" = 200'

Date Exported 2025-04-10

290532C
Myrtle Creek

CANCELLED NOS:
400U3 400U7 400U9
400V1 400V3 400V4
400V5 400V6 400U5
3101 2901 2700A1
2200 3200 400U1
400U2 400U4 400U6
400U8 400V2 301
401



19-02

19-01

290532C
Myrtle Creek

Lower Right:
123°18'35"W 42°59'49"N
4169747E 497449N ft