

THIS MAP WAS PREPARED FOR ASSESSMENT PURPOSE ONLY.

1/4 COR

NE1/4 SEC.32 T.29S. R.5W. W.M. DOUGLAS COUNTY

1" = 200'

SEE MAP 29 5 29

REVISED ON 2-20-18

29 5 32A

29 28

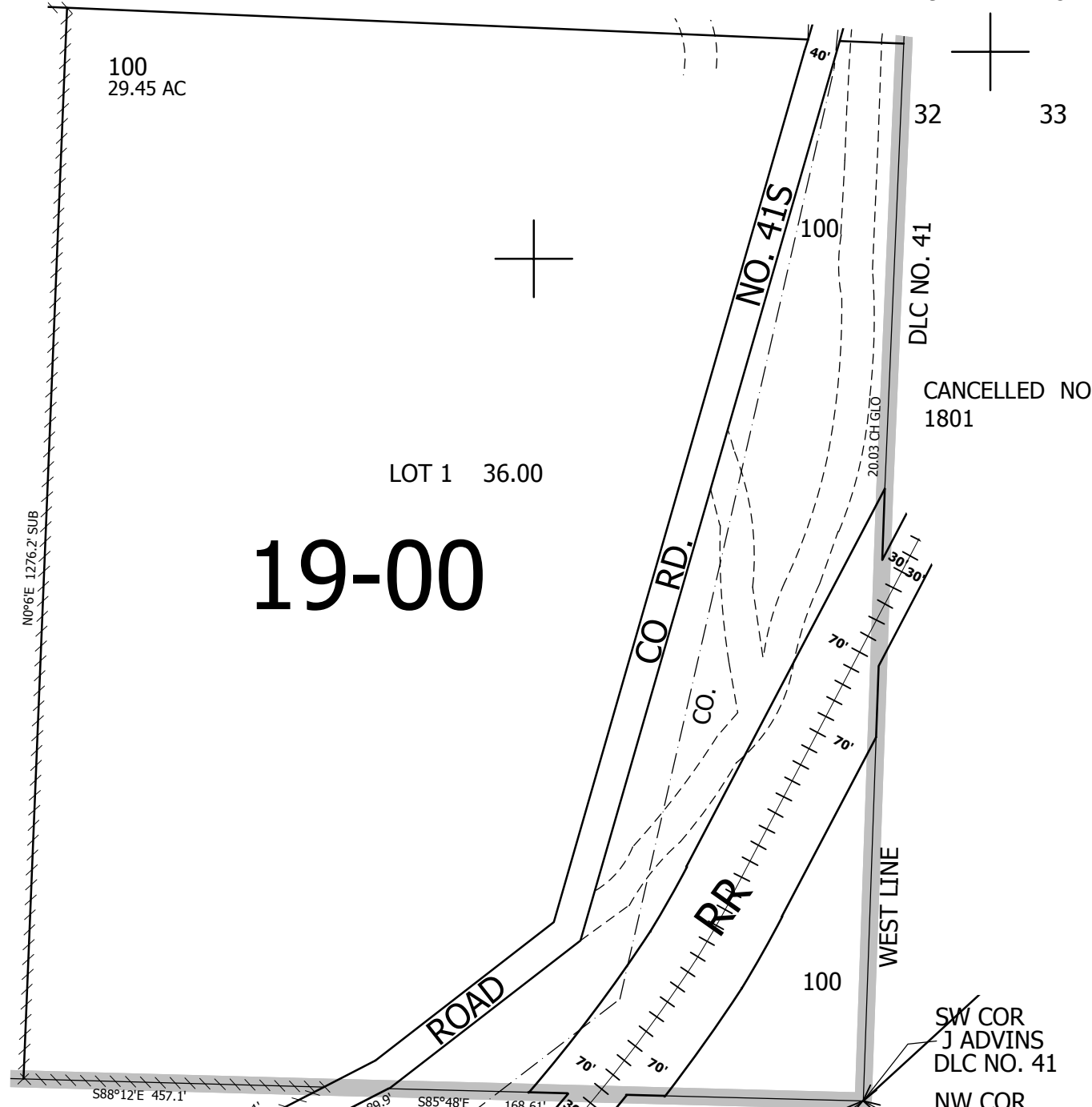
32 33

CANCELLED NO'S 1801

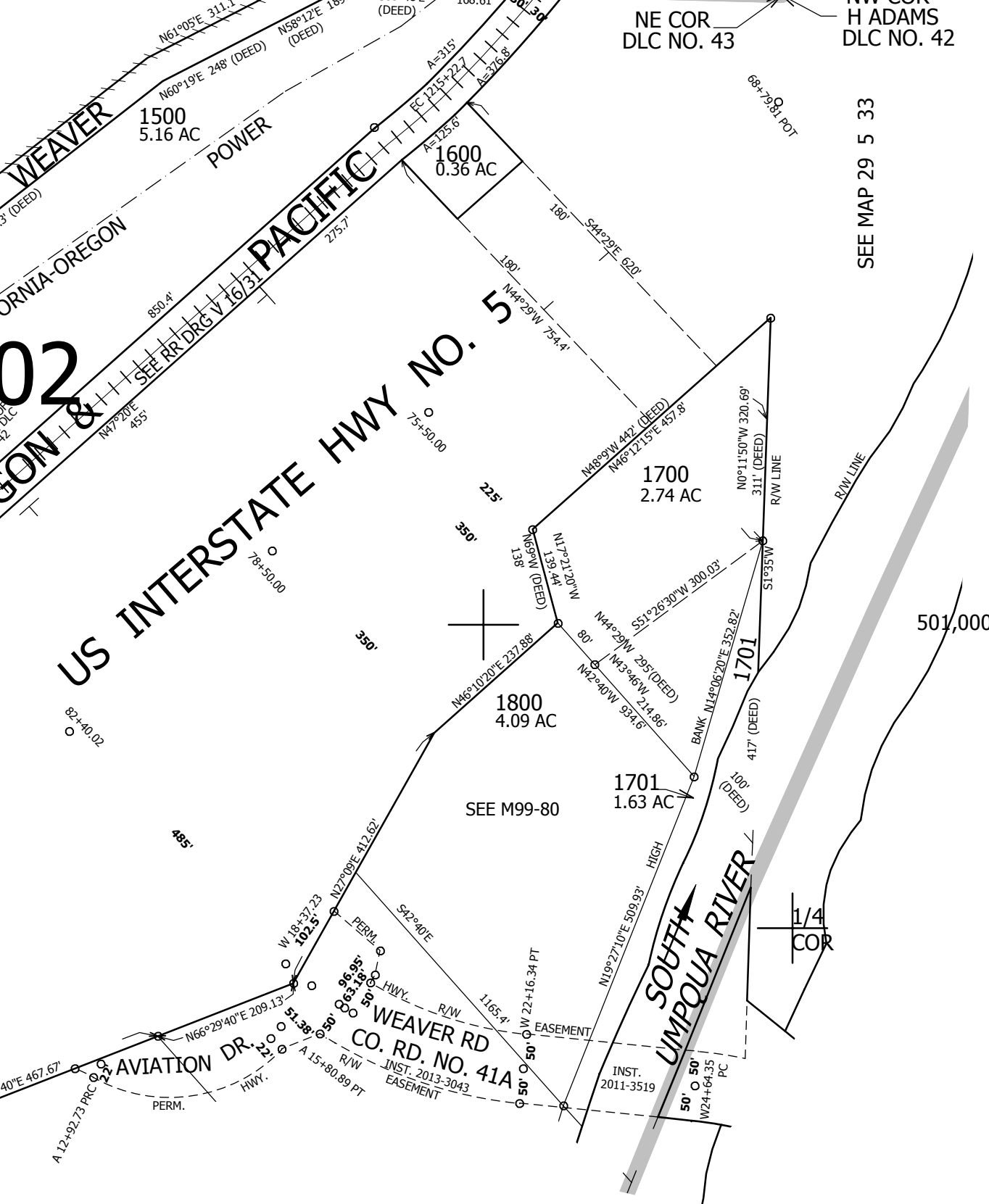
SW COR J ADVINS DLC NO. 41  
NW COR H ADAMS DLC NO. 42

SEE MAP 29 5 33

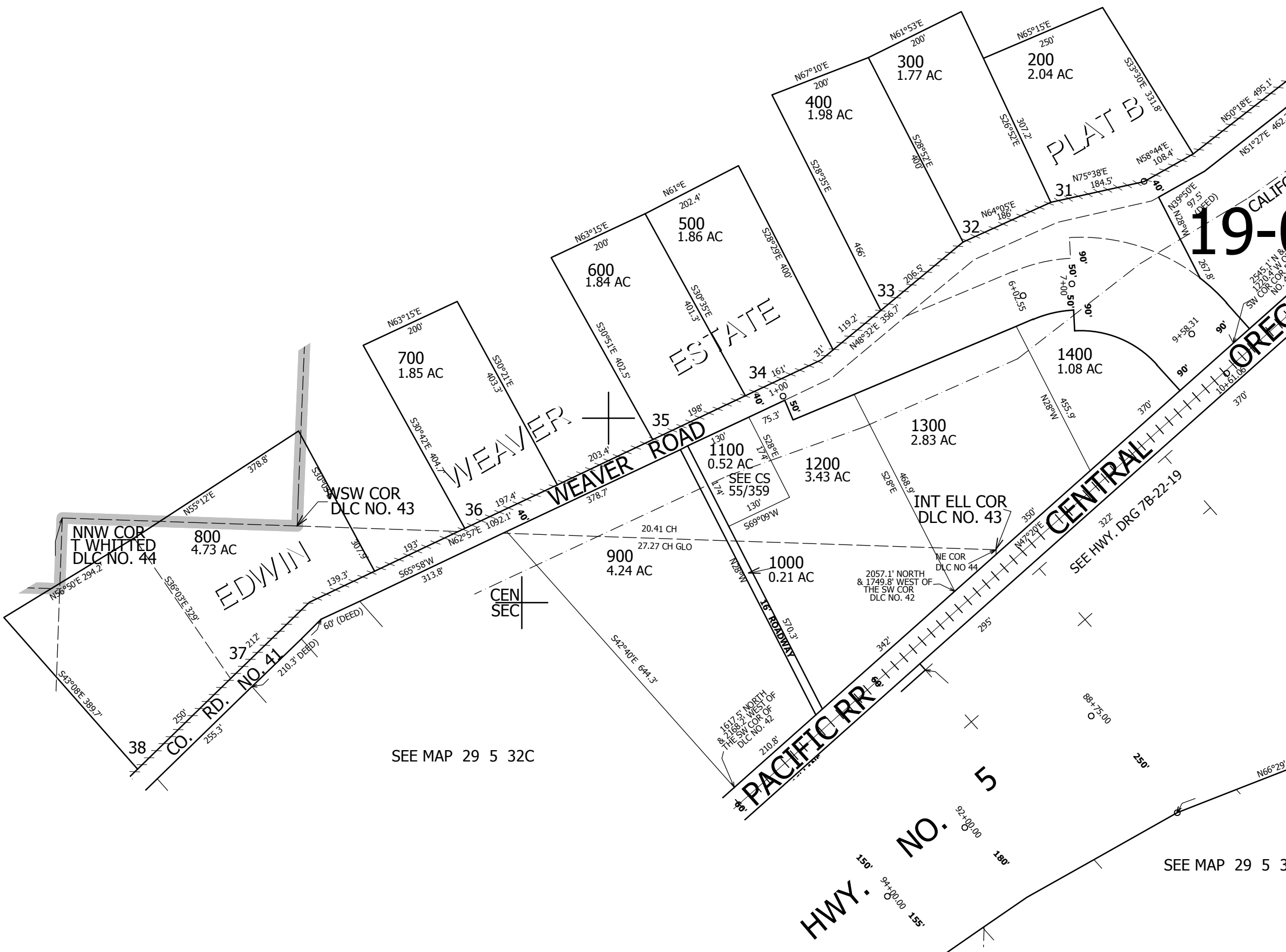
29 5 32A



19-00



19-02



SEE MAP 29 5 32C

SEE MAP 29 5 32D

4,171,000

501,000