

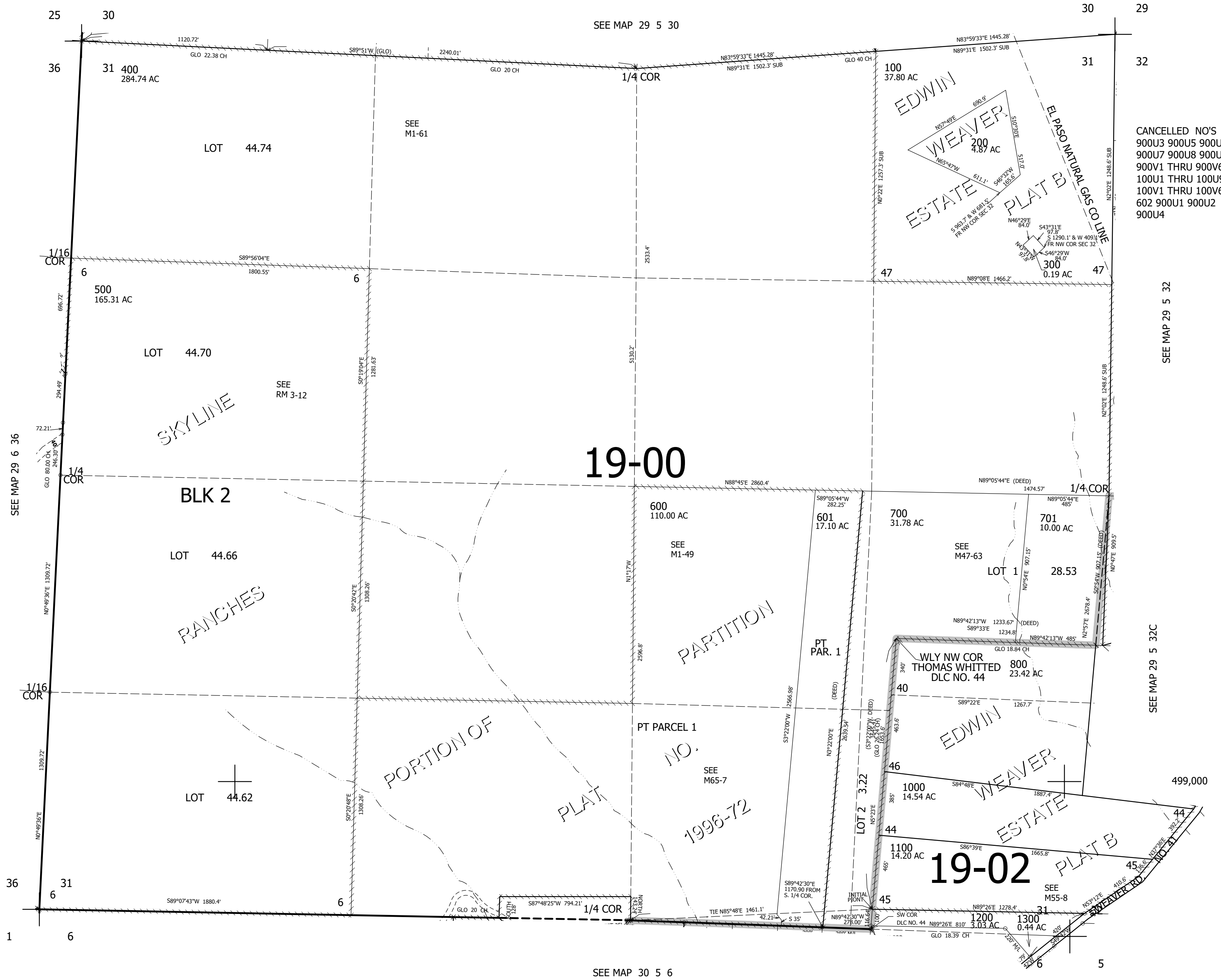
THIS MAP WAS PREPARED FOR ASSESSMENT PURPOSE ONLY.

SEC.31 T.29S. R.5W. W.M. DOUGLAS COUNTY

1" = 400'

REVISED ON 6-23-21

29 5 31



CANCELLED NO'S 900U3 900U5 900U6 900U7 900U8 900U9 900V1 THRU 900V6 100U1 THRU 100U9 100V1 THRU 100V6 602 900U1 900U2 900U4

SEE MAP 29 5 32

SEE MAP 29 5 32C

SEE MAP 30 5 6

4,166,000

29 5 31