

THIS MAP WAS PREPARED FOR ASSESSMENT PURPOSE ONLY.

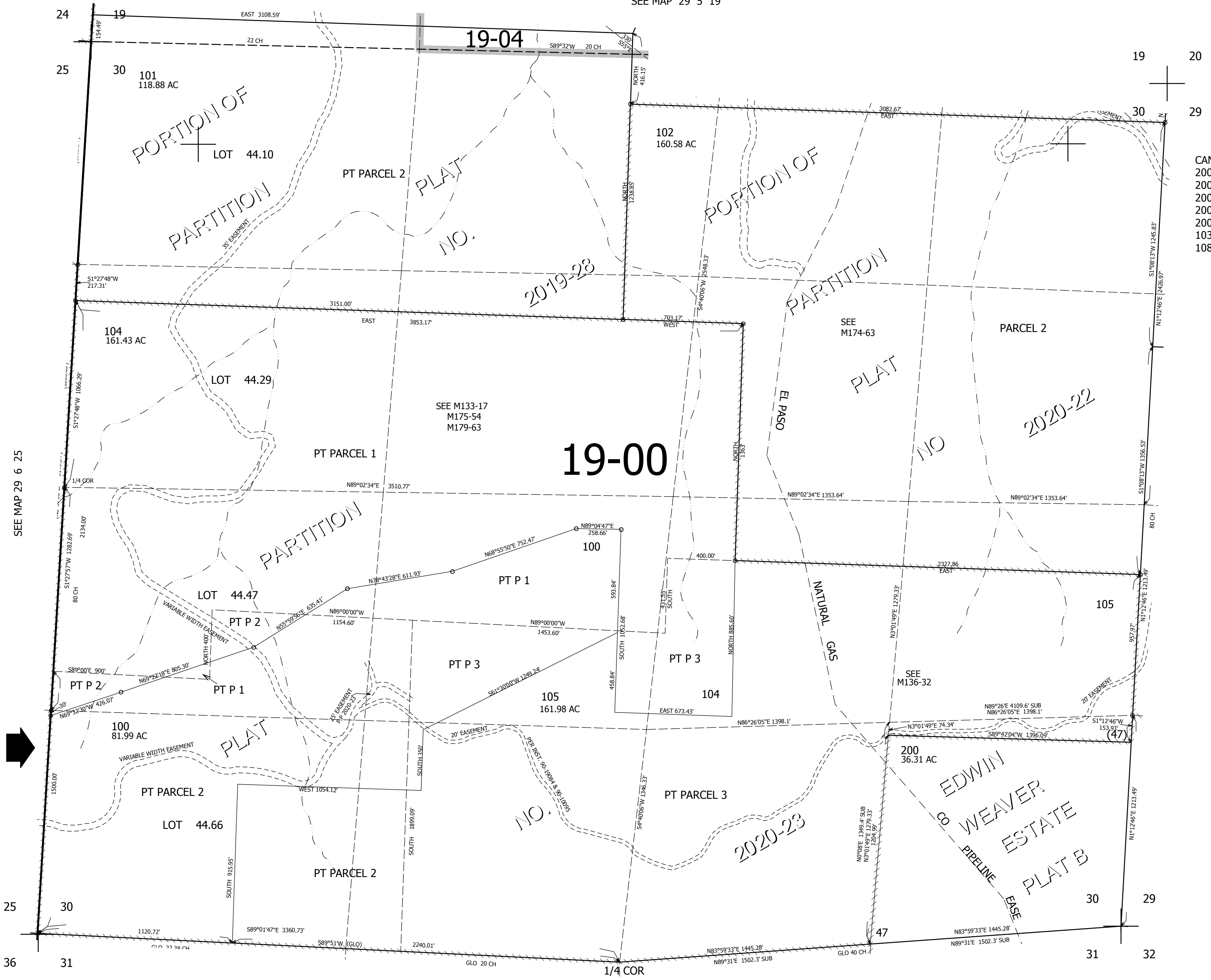
SEC.30 T29S. R.5W. W.M. DOUGLAS COUNTY

REVISED ON
5-27-21

29 5 30

1" = 400'

SEE MAP 29 5 19



CANCELLED NO'S
 200U2 200U3 200U4
 200U5 200U6 200U7
 200U8 200U9 200V1
 200V2 200V3 200V4
 200V5 200V6 201
 103 106 107
 108 109 110

SEE MAP 29 6 25

SEE MAP 29 5 29



SEE MAP 29 5 31

503,000

29 5 30

4,166,000