

THIS MAP WAS PREPARED FOR ASSESSMENT PURPOSE ONLY.

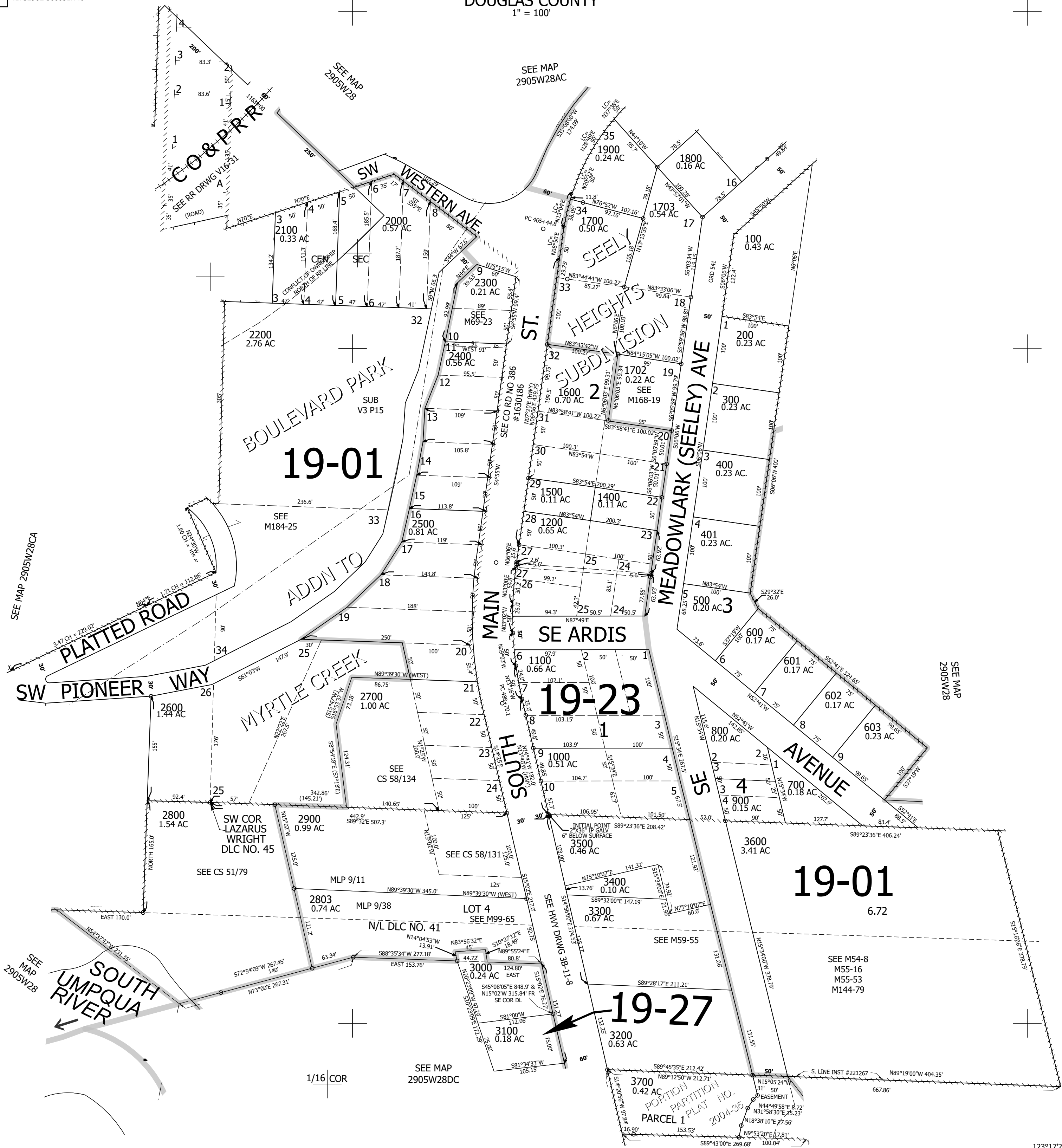
Upper Left:
123°17'52"W 43°1'15"N
4173290E 506031N ft

NW1/4 SE1/4 SEC.28 T.29S. R.05W. W.M.
DOUGLAS COUNTY
1" = 100'

Date Exported 2025-10-28

290528DB
Myrtle Creek

CANCELLED NOS:
2801 2802 1300
1701 3100A1



1/16 COR

1/16 COR

1/16 COR

290528DB
Myrtle Creek

Lower Right:
123°17'24"W 43°0'59"N
4175262E 504292N ft