

THIS MAP WAS PREPARED FOR ASSESSMENT PURPOSE ONLY.

SE1/4 NE1/4 SEC.28 T29S. R.5W. W.M. DOUGLAS COUNTY

1" = 100'

REVISED ON 4-11-19

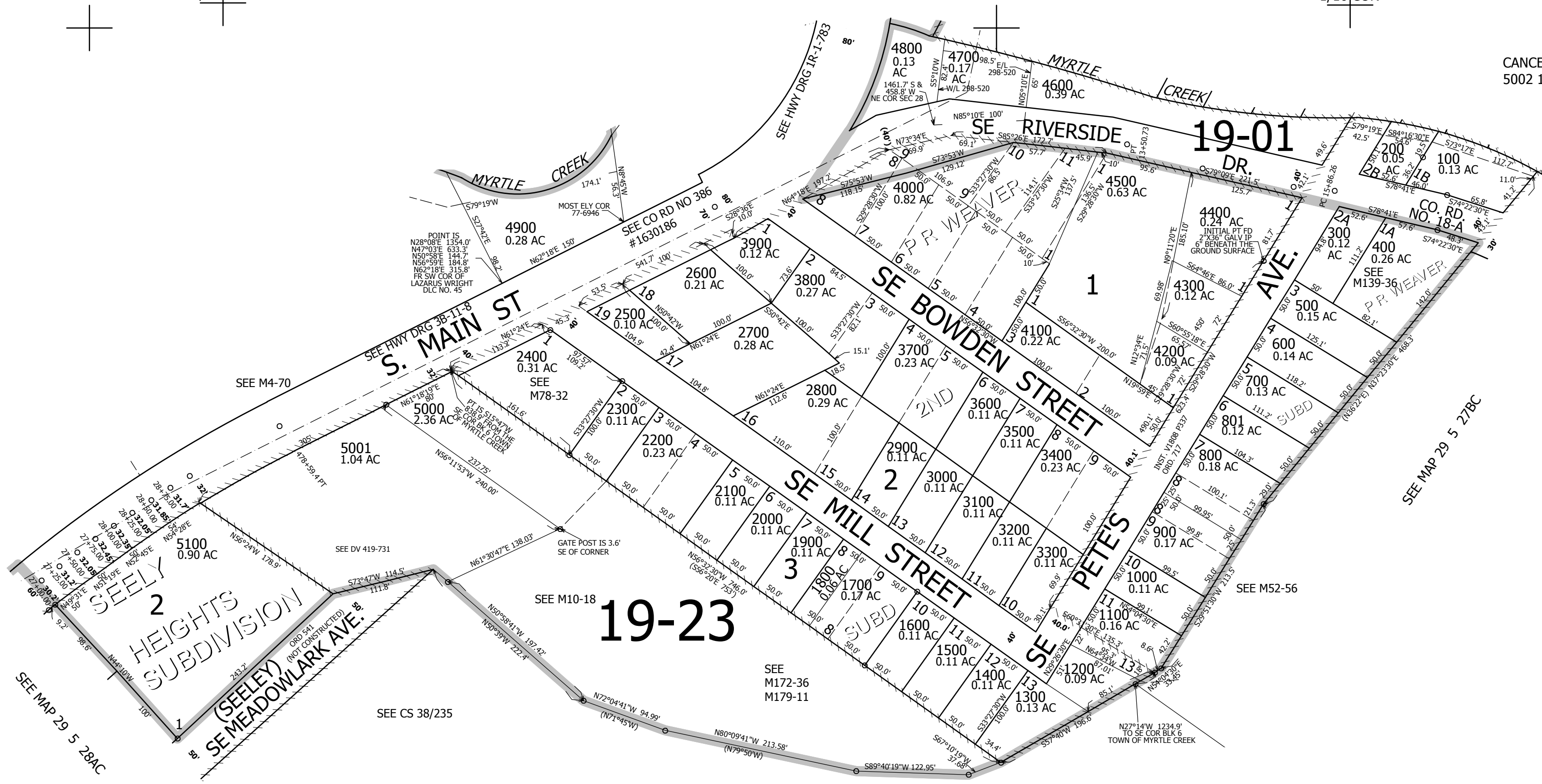
29 5 28AD MYRTLE CREEK

CANCELLED NO'S 5002 1801

1/16 COR

SEE MAP 29 5 28AA

1/16 COR



SEE M4-70

SEE DV 419-731

SEE CS 38/235

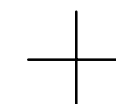
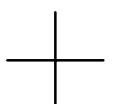
SEE M10-18

SEE M172-36
M179-11

SEE M52-56

SEE MAP 29 5 27BC

SEE MAP 29 5 28



506,000

1/16 COR

1/4 COR

4,176,000

29 5 28AD MYRTLE CREEK