

THIS MAP WAS PREPARED FOR ASSESSMENT PURPOSE ONLY.

SW1/4 NE1/4 SEC.28 T29S. R.5W. W.M.
DOUGLAS COUNTY
1" = 100'

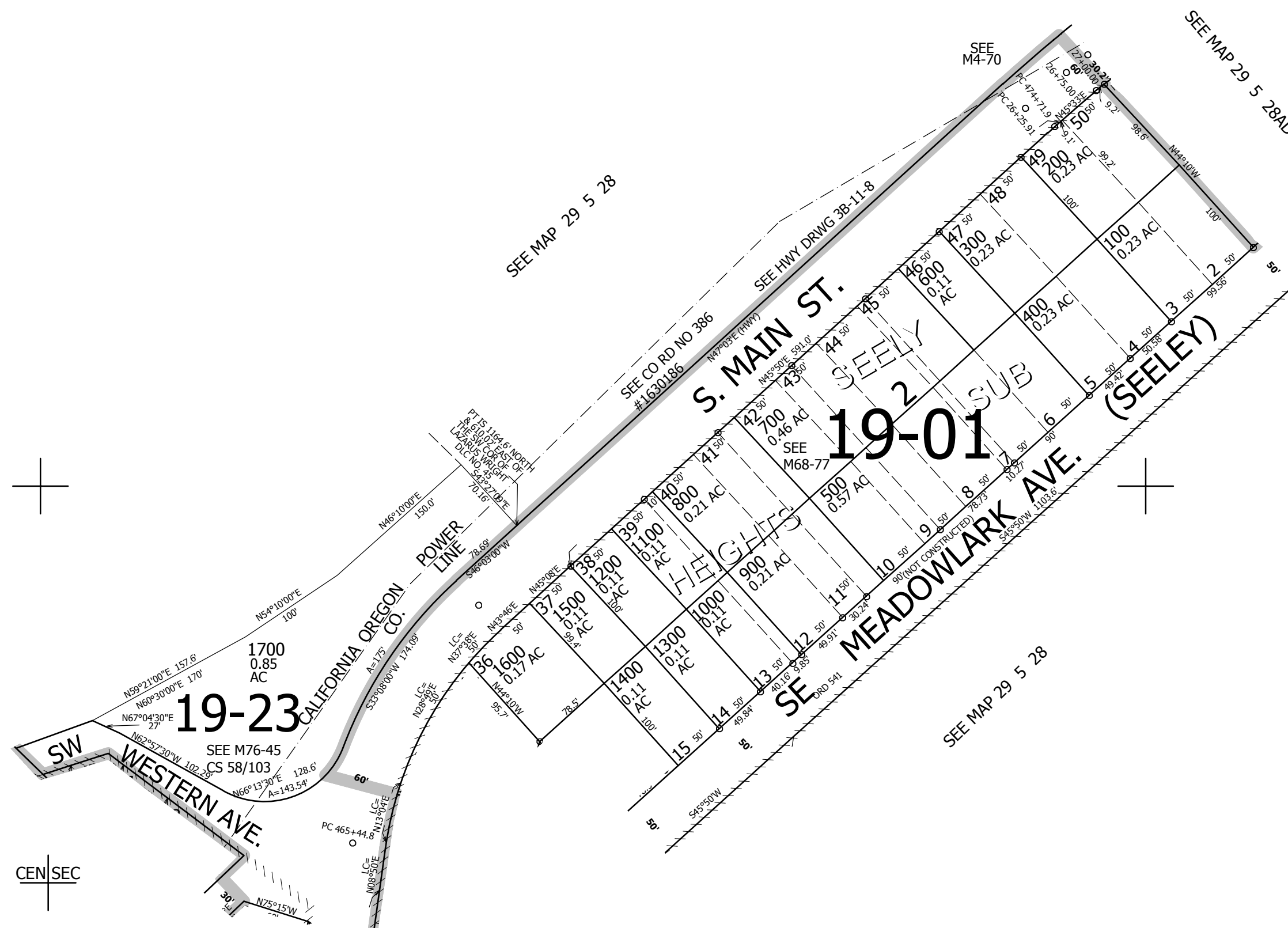
REVISED ON
4-11-19

29 5 28AC
MYRTLE CREEK

1/16 COR

1/16 COR

CANCELLED NO'S



506,000

CEN SEC

1/16 COR

SEE MAP 29 5 28DB

4,175,000

29 5 28AC
MYRTLE CREEK