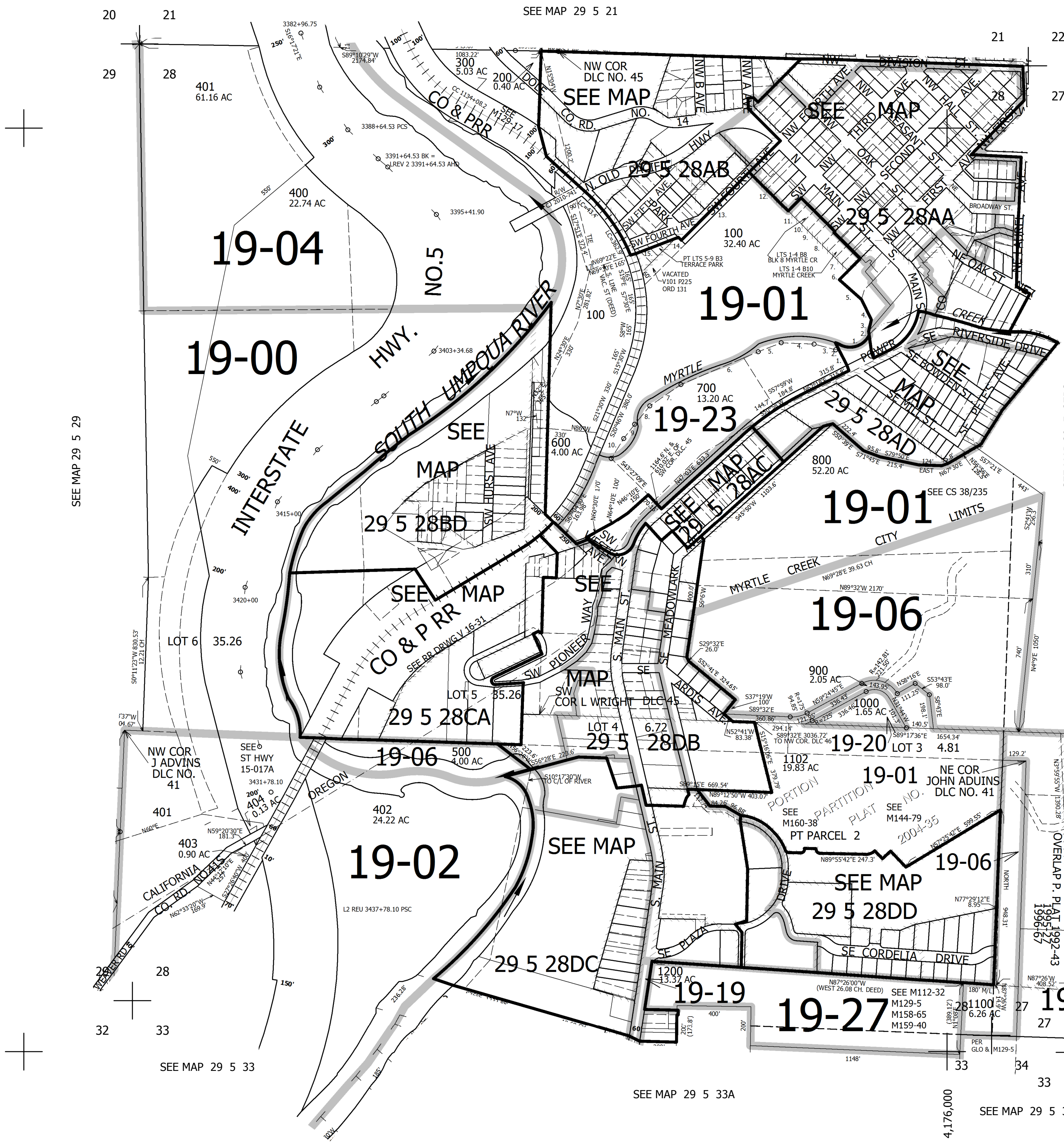


THIS MAP WAS PREPARED FOR ASSESSMENT PURPOSE ONLY.

SEC.28 T29S. R.5W. W.M.
DOUGLAS COUNTY
1" = 400'

REVISED ON
1-27-21

29 5 28
& INDEX
MYRTLE CREEK



- CANCELLED NO'S
- 1101 1108 1104
 - 1109 1110 1111
 - 1112 401M1 403M1
 - 900M1 1103 1103A1
 - 1105 1106 1107
 - 1113 1114 399

- PARCEL 100
- 1. N77°17'E 191.4'
 - 2. N8°45'W 62.1'
 - 3. N8°E 64.6'
 - 4. N31°51'W 121.3'
 - 5. N50°43'W 164.4'
 - 6. N42°57'E 160'
 - 7. N47°03'W 200'
 - 8. N42°57'E 8'
 - 9. N47°03'W 160'
 - 10. S42°57'W 76'
 - 11. N86°02'W 38.4'
 - 12. N47°41'W 337.8'
 - 13. S43°18'W 520'
 - 14. N46°42'W 53.4'
 - 15. S67°03'W 253.3'

- PARCEL 700
- 1. N27°42'W 98.2'
 - 2. S77°17'W 17.3'
 - 3. N75°50'W 120.4'
 - 4. N88°30'W 178'
 - 5. S67°40'W 133.4'
 - 6. S66°11'W 454.5'
 - 7. S54°46'W 204'
 - 8. S38°46'W 128.8'
 - 9. S36°29'W 97.2'
 - 10. S31°21'W 127'

SEE MAP 29 5 29

SEE MAP 29 5 27BB

SEE MAP 29 5 27BC

SEE MAP 29 5 27

SEE MAP 29 5 33

SEE MAP 29 5 33A

SEE MAP 29 5 34

29 5 28
& INDEX
MYRTLE CREEK

503,000

4,176,000