

THIS MAP WAS PREPARED FOR ASSESSMENT PURPOSE ONLY.

Upper Left:
123°16'57"W 43°1'41"N
4177436E 508500N ft

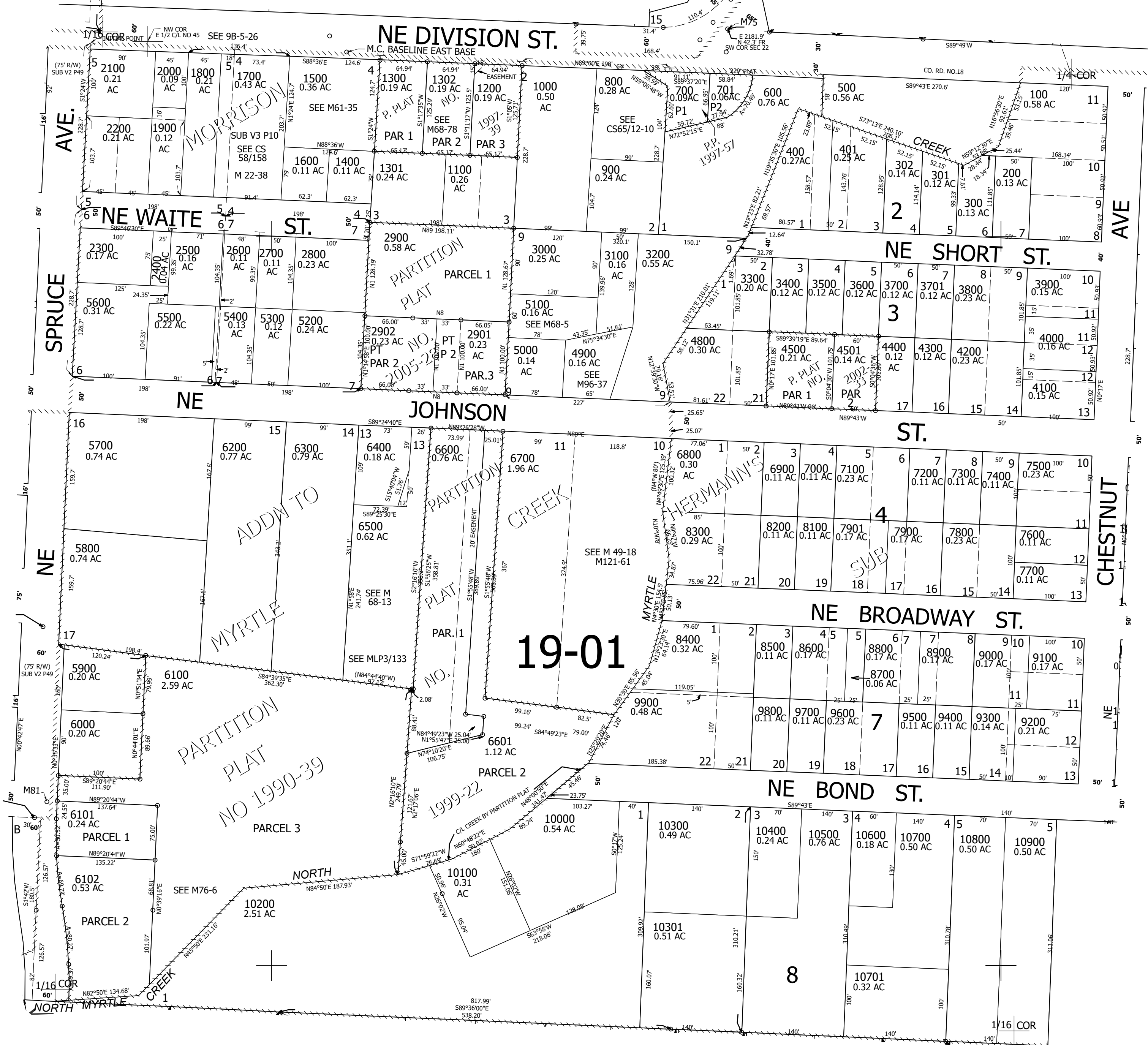
NE1/4 NW1/4 SEC.27 T.29S. R.05W. W.M.
DOUGLAS COUNTY
1" = 100'

Date Exported 2023-05-03

290527BA
& Myrtle Creek

CANCELLED NOS:
4600 8000 4700
1202 1101 1201
2903

SEE MAP
2905W22CD



SEE MAP
2905W27BB

SEE MAP
2905W27AB

SEE MAP
2905W27BD

290527BA
Lower Right:
123°16'30"W 43°1'31"N
4179399E 506761N ft
& Myrtle Creek