

THIS MAP WAS PREPARED FOR ASSESSMENT PURPOSE ONLY.

Upper Left:
123°16'39"W 43°1'41"N
4178773E 508413N ft

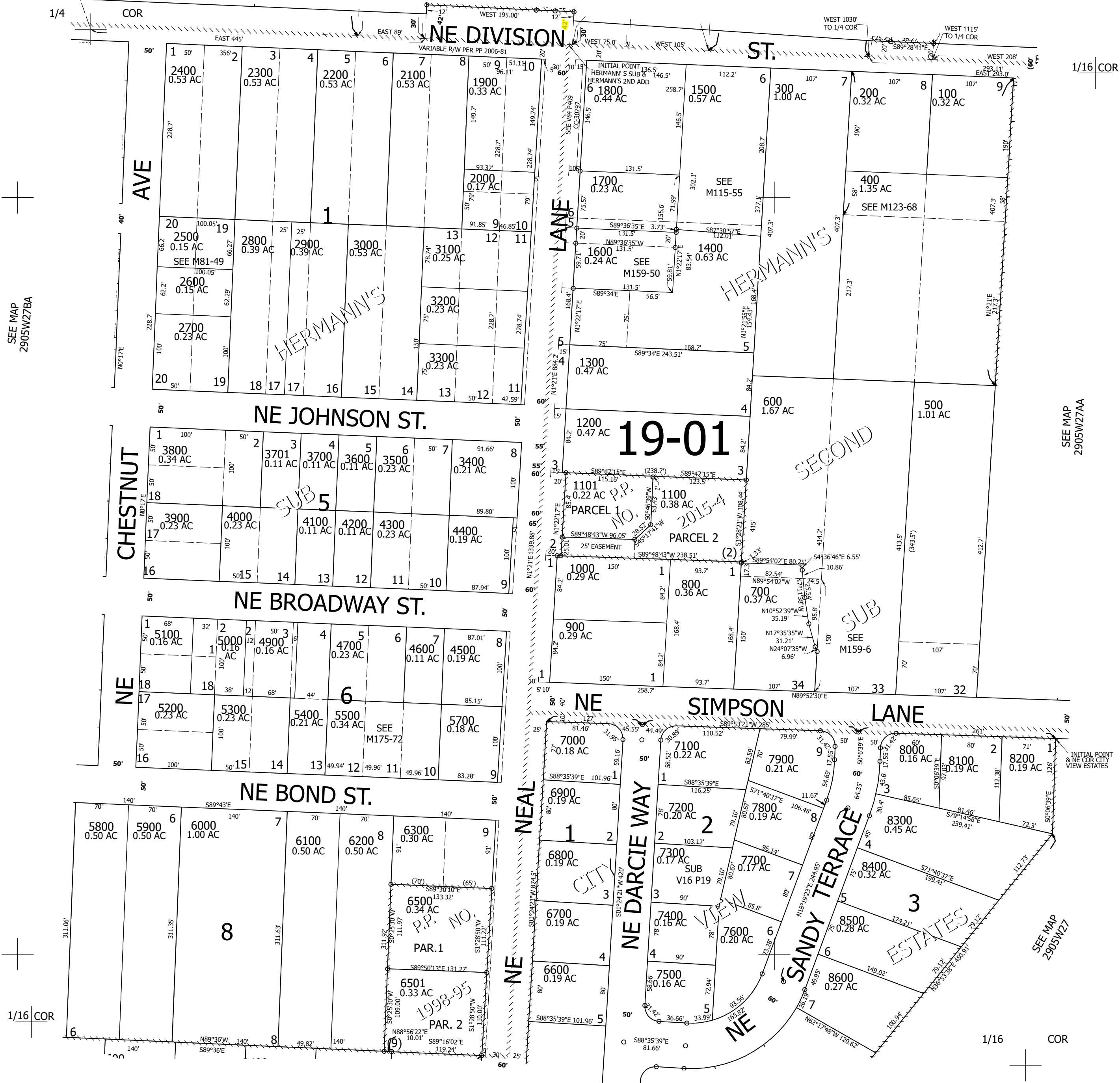
NW1/4 NE1/4 SEC.27 T.29S. R.05W. W.M.
DOUGLAS COUNTY
1" = 100'

Date Expored 2023-09-06

290527AB
Myrtle Creek

CANCELLED NOS:
6400 1501 1901
101 201 601
701 1701 5600

SEE MAP
2905W22DC



SEE MAP
2905W27BA

SEE MAP
2905W27AA

SEE MAP
2905W27AC

SEE MAP
2905W27Z

290527AB
Myrtle Creek

Lower Right:
123°16'12"W 43°1'24"N
4180736E 506675N ft