

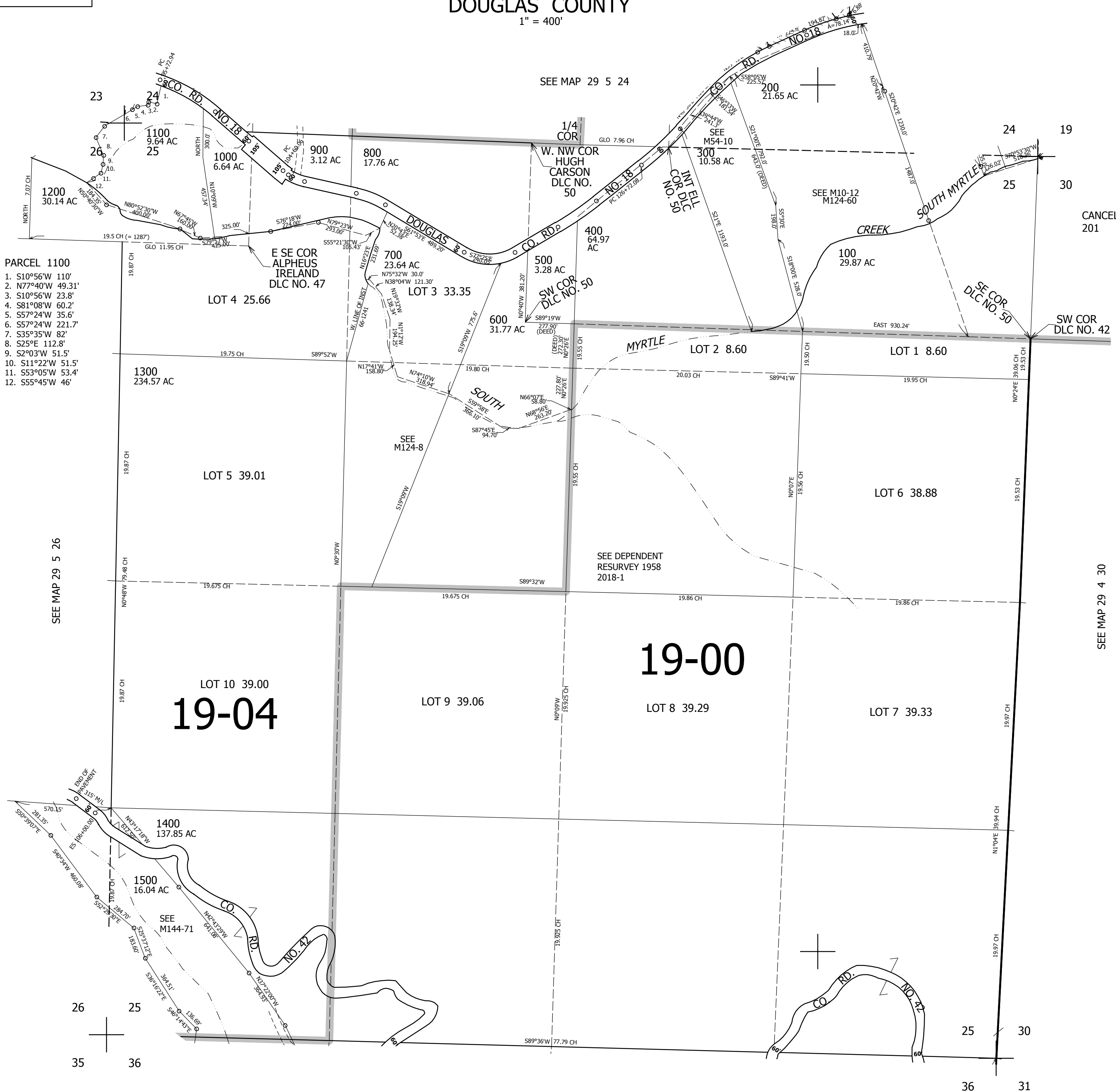
THIS MAP WAS PREPARED FOR ASSESSMENT PURPOSE ONLY.

SEC.25 T29S. R.5W. W.M.
DOUGLAS COUNTY

REVISED ON
2-10-15

29 5 25

1" = 400'



- PARCEL 1100
1. S10°56'W 110'
 2. N77°40'W 49.31'
 3. S10°56'W 23.8'
 4. S81°08'W 60.2'
 5. S57°24'W 35.6'
 6. S57°24'W 221.7'
 7. S35°35'W 82'
 8. S25°E 112.8'
 9. S2°03'W 51.5'
 10. S11°22'W 51.5'
 11. S53°05'W 53.4'
 12. S55°45'W 46'

CANCELLED NO'S
201

SEE MAP 29 4 30

503,000

SEE MAP 29 5 36

4,191,000

29 5 25