

THIS MAP WAS PREPARED FOR  
ASSESSMENT PURPOSE ONLY.

NW1/4 SEC.23 T29S. R.5W. W.M.  
DOUGLAS COUNTY

REVISED ON  
2-10-15

29 5 23B

1" = 200'

SEE MAP 29 5 22AA

SEE MAP 29 5 22AD

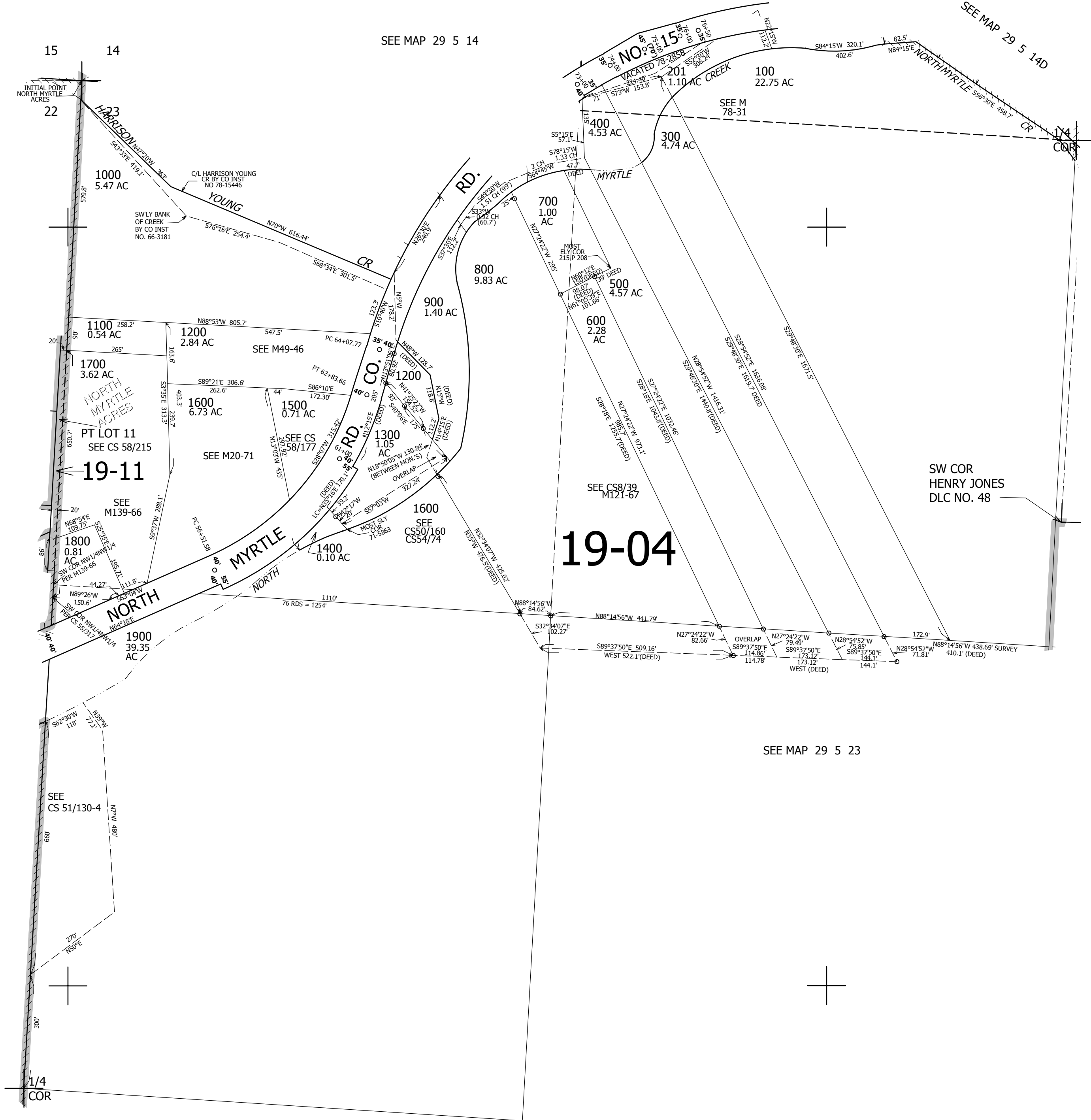
SEE MAP 29 5 22

SEE MAP 29 5 14

SEE MAP 29 5 14D

CANCELLED NO'S  
200

SEE MAP 29 5 23



SEE MAP 29 5 23

SEE MAP 29 5 23

511,000

4,184,000

CEN SEC

29 5 23B