

THIS MAP WAS PREPARED FOR ASSESSMENT PURPOSE ONLY.

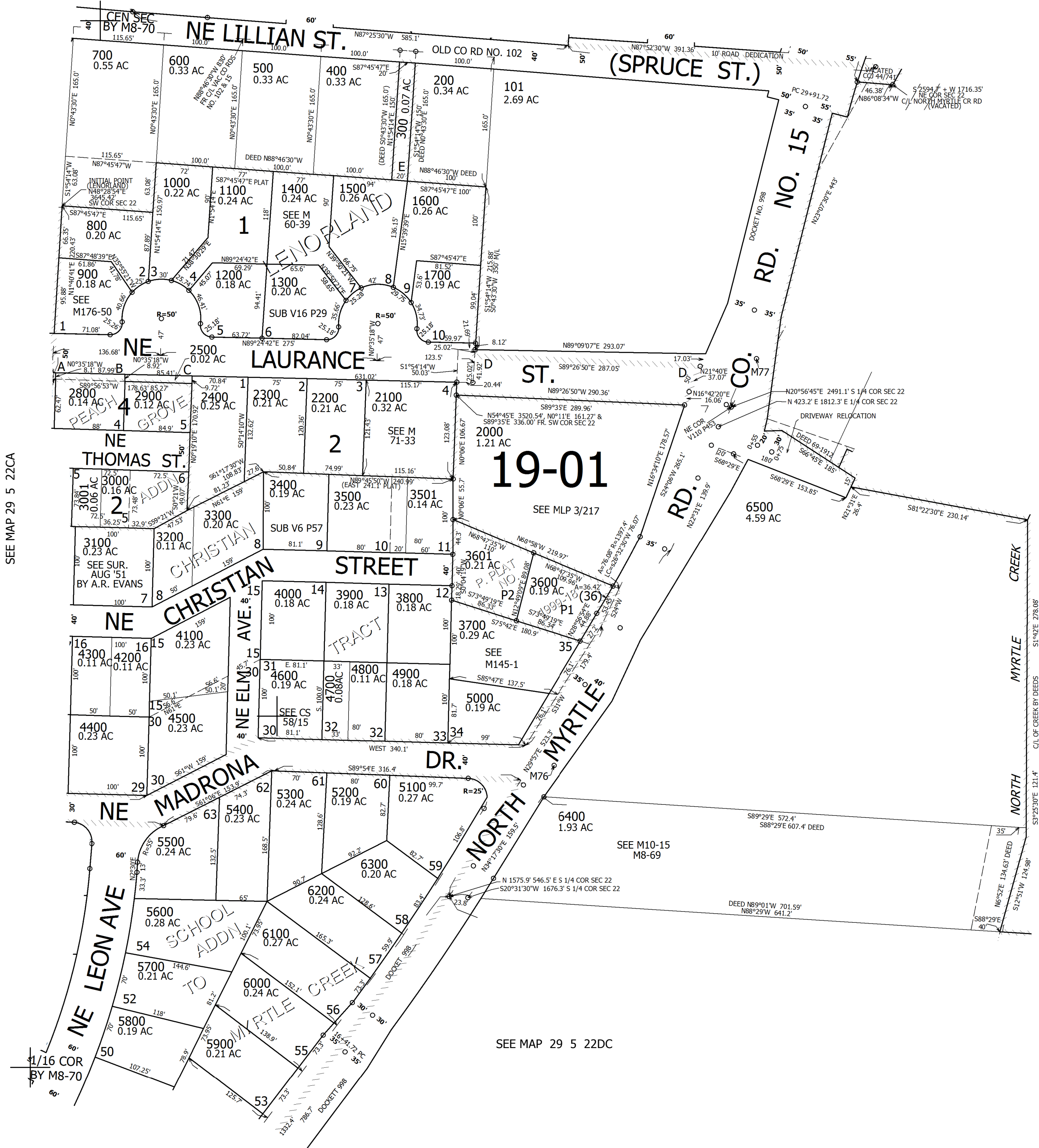
# NW1/4 SE1/4 SEC.22 T29S. R.5W. W.M. DOUGLAS COUNTY

REVISED ON 1-27-21

## 29 5 22DB MYRTLE CREEK

1" = 100'

SEE MAP 29 5 22AC



1/16 COR

CANCELLED NO'S  
100 2600 2700  
1800 1900

SEE MAP 29 5 22CA

SEE MAP 29 5 22

510,000

SEE MAP 29 5 22DC

1/16 COR

4,180,500

## 29 5 22DB MYRTLE CREEK