

THIS MAP WAS PREPARED FOR ASSESSMENT PURPOSE ONLY.

SE1/4 SW1/4 SEC.22 T29S. R.5W. W.M.  
DOUGLAS COUNTY

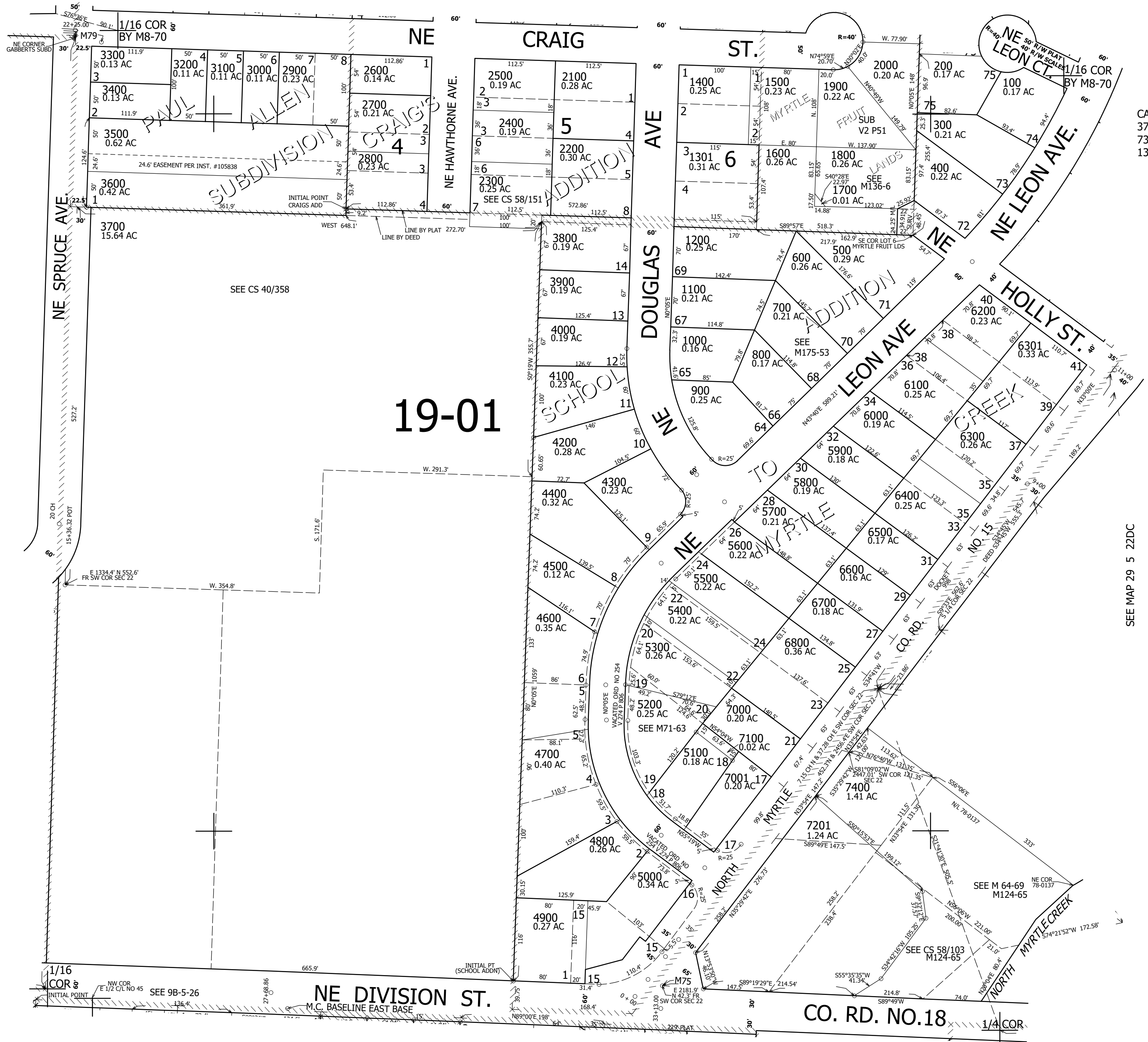
1" = 100'

REVISED ON  
3-16-22

29 5 22CD  
MYRTLE CREEK

SEE MAP 29 5 22CA

SEE MAP 29 5 22CC



CANCELLED NO'S  
3700A1 2301 7200  
7300 7301 7401  
1300 5800A1 6900

SEE MAP 29 5 22DC

508,500

SEE MAP 29 5 27BA

4,179,000

29 5 22CD  
MYRTLE CREEK