

THIS MAP WAS PREPARED FOR ASSESSMENT PURPOSE ONLY.

Upper Left:  
123°17'15"W 43°1'54"N  
4176162E 509866N ft

SW1/4 SW1/4 SEC.22 T.29S. R.05W. W.M.  
DOUGLAS COUNTY  
1" = 100'

Date Exported 2023-09-28

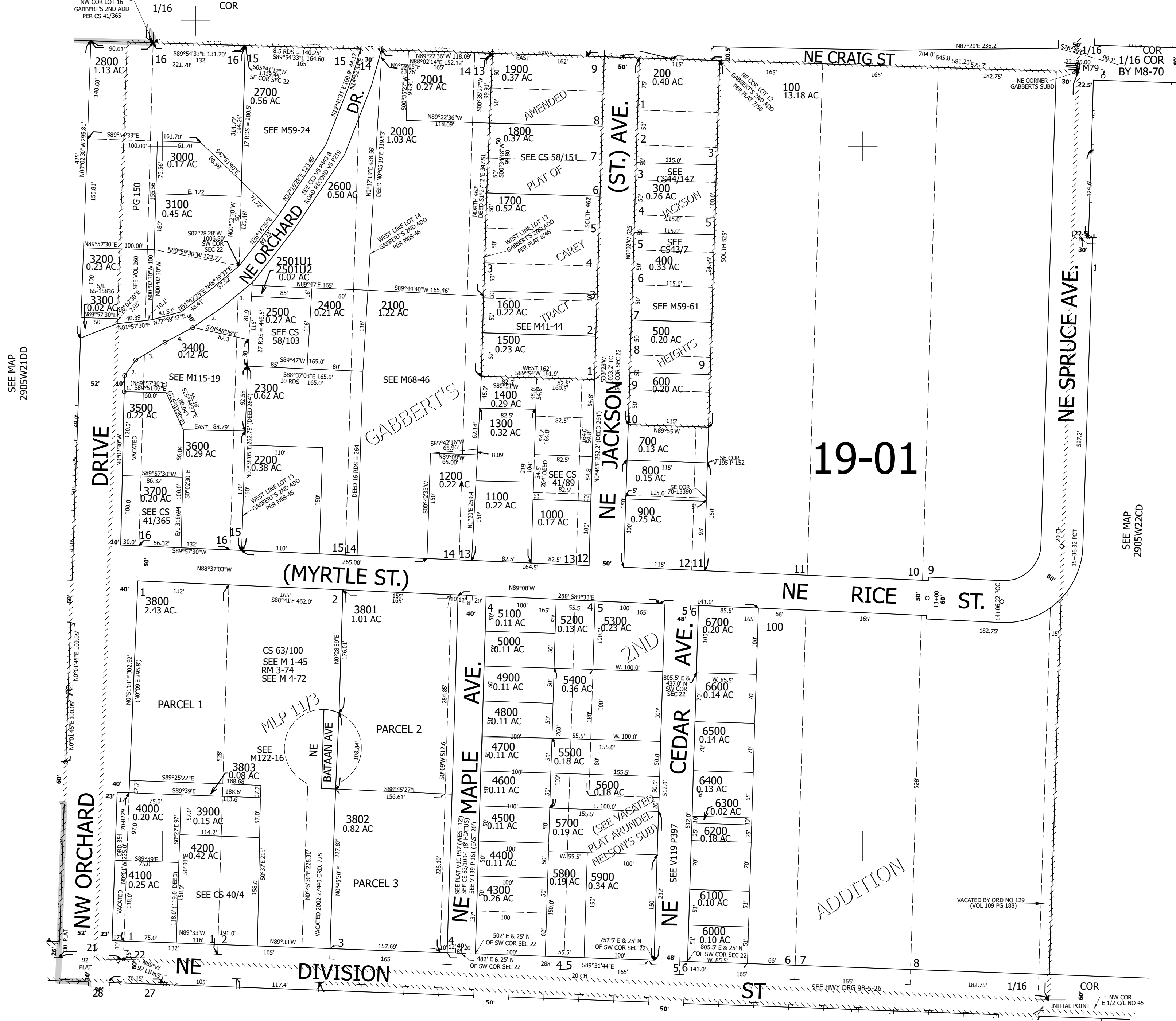
290522CC  
Myrtle Creek

CANCELLED NOS:  
3401 2900

- PARCEL 3400
- 50°10'14"W 23.25'
  - 535°01'02"W 27.42'
  - 557°43'46"W 48.37'
  - 560°30'42"W 45.2'

- PARCEL 2500
- 549°17'37"W 56.54'
  - 554°45'04"W 50.22'

SEE MAP  
2905W22CB



SEE MAP  
2905W21DD

SEE MAP  
2905W22CD

SEE MAP  
2905W27BB

290522CC  
Myrtle Creek

Lower Right:  
123°16'47"W 43°1'37"N  
4178125E 508128N ft